

Ceiling mount bracket

**Description**

This ceiling mount bracket is to be used when mounting LCD projectors to the heigh ceiling.

|                       |   |   |
|-----------------------|---|---|
| <b>Specifications</b> | Vertical correction angle:                        | +20°, -5°   |
|                       | Horizontal slant correction angle:                | ±10°  |
|                       | Horizontal turn correction angle:                 | ±5°   |
|                       | Dimensions (W x H x D):                           | 435 x 424-507 x 254 mm<br>(17-1/8" x 16-11/16"-19-31/32" x 10") |
|                       | <b>Note: Height (H) include holding brackets.</b> |   |
| Weight:               | 2.7 kg (6.0 lbs)                                  |   |

Weights and dimensions shown are approximate. Specifications subject to change without notice.

|              |                         |        |   |         |  |
|--------------|-------------------------|--------|---|---------|--|
| <b>Parts</b> | Attachment plate        | .....1 | Holding bracket B                       | .....1  |  |
|              | Projector mount bracket | .....1 | Washer-fitted hexagonal bolts (M6 x 12) | .....15 |  |
|              | Adjuster pole A         | .....1 | Hexagonal screws (M6 x 8)               | .....4  |  |
|              | Adjuster pole B         | .....1 | Washer-fitted screws (M4 x 12)          | .....8  |  |
|              | Angle adjuster A        | .....1 | Wire rope                               | .....1  |  |
|              | Angle adjuster B        | .....1 | Flat wire clip                          | .....2  |  |
|              | Holding bracket A       | .....1 | Clamp tube                              | .....2  |  |
|              |                         |        |   |         |  |
|              |                         |        |   |         |  |
|              |                         |        |   |         |  |

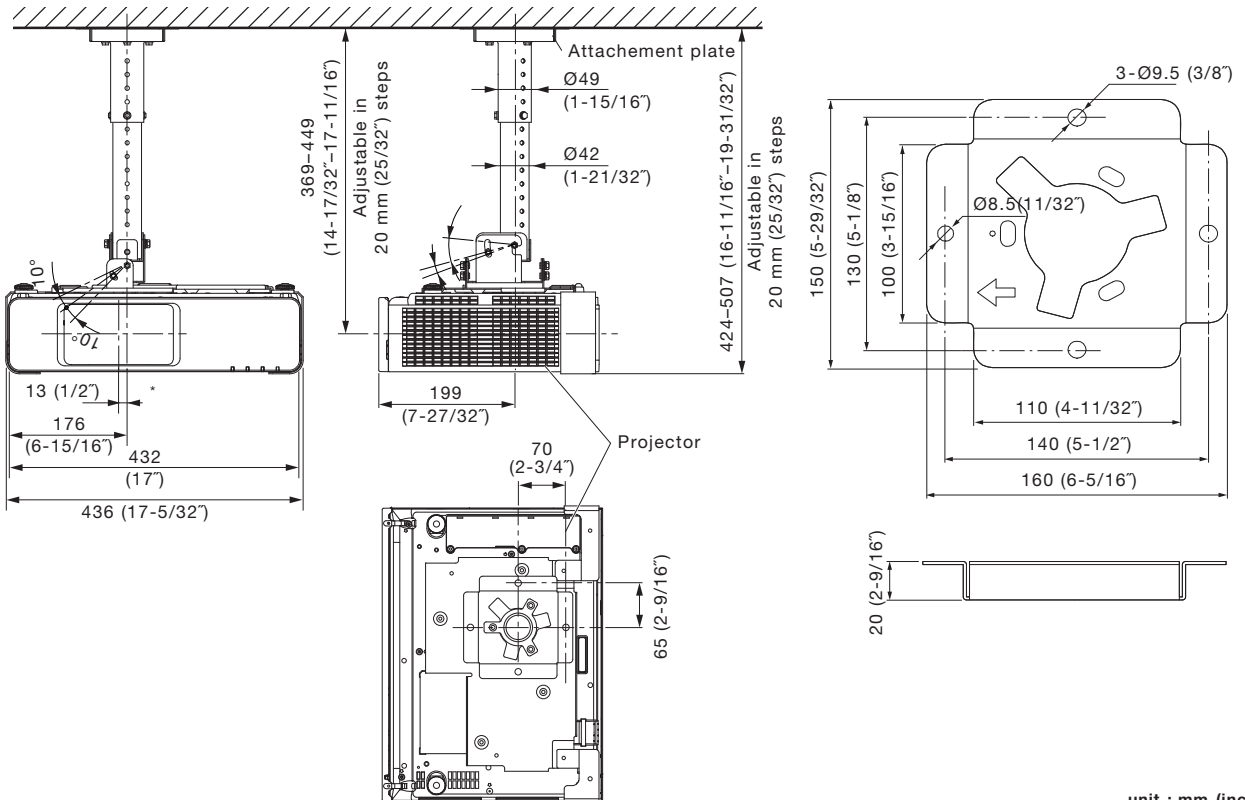
**Caution:**

- Mounting should be done by a qualified technician.
- Make sure that the mounting (ceiling) area has sufficient strength.
- Read the enclosed mounting instructions thoroughly before starting.
- When the product is no longer going to be used, have it disposed of quickly by a professional disposal service.
- Do not use an electric screwdriver or impact driver to tighten screws. (Use a torque driver or similar tool.)

**Dimensions**

Illustration shows the bracket attached to the PT-F300NT/F300/FW300NT/FW300.

Attachment plate



unit : mm (inch)  
NOTE: This illustration is not drawn to scale.

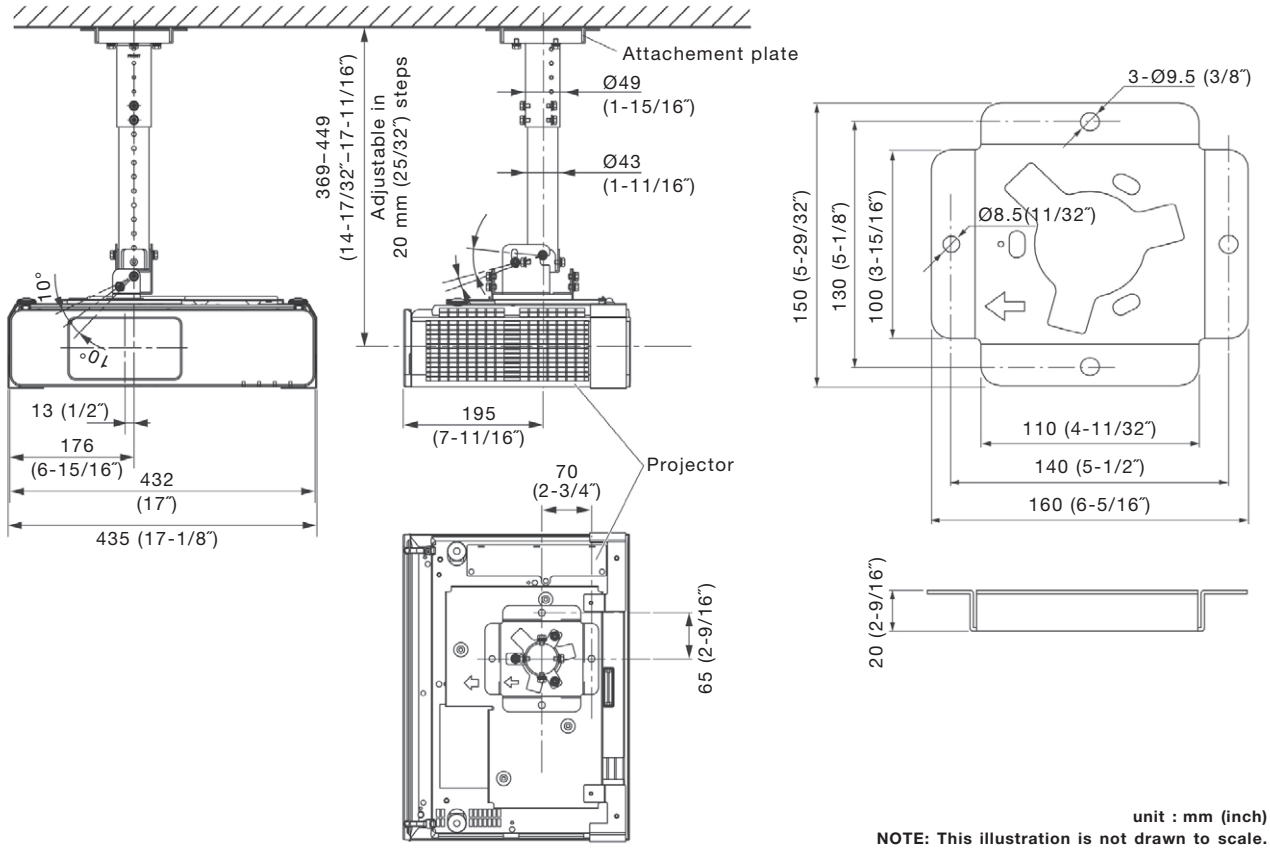
Ceiling mount bracket

**ET-PKF100H**

**Dimensions**

Illustration shows the bracket attached to the PT-F200NT/F200.

Attachment plate



unit : mm (inch)  
NOTE: This illustration is not drawn to scale.