

Wall-hanging bracket

Description

This bracket is used when mounting a Panasonic's applicable projector to walls.

Specifications	Vertical correction angle:	+4°, -2°
	Horizontal slant correction angle:	±5°
	Horizontal turn correction angle:	360°
	Dimensions (W × H × D):	463 × 199 × 401–497 mm (18-7/32 × 7-27/32 × 15-25/32–19-9/16 inches)
	Weight:	Approx. 7.6 kg* (16.8 lbs*)
Applicable projector:	PT-CW230/CX200	

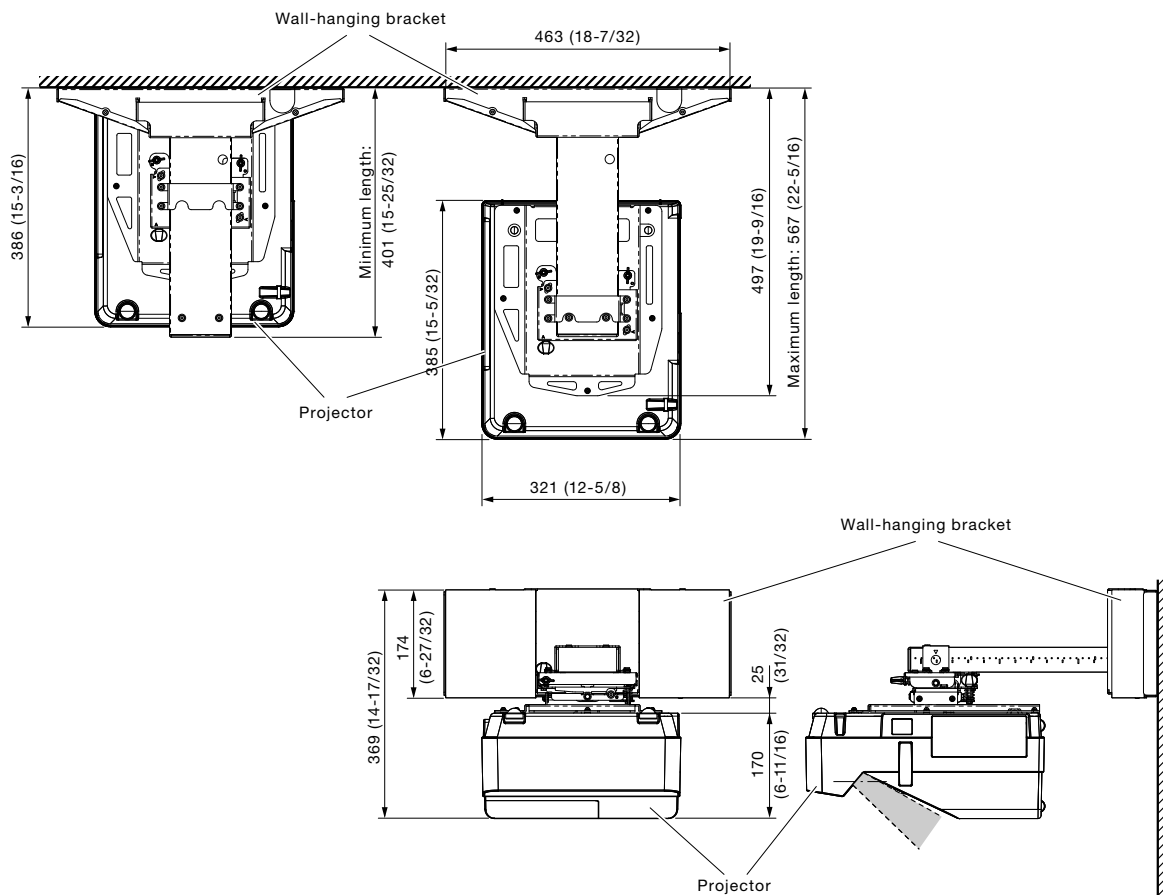
* Average value. May differ depending on models.

Parts	Wall-hanging bracket 1	hexagonal socket head bolt (M5 × 10) 2
	Mounting bracket 1	Safety wire 1
	Cover plate 2	Cable tie 2
	Adjustment unit 1	Hexagonal torque wrench (6 mm) 1
	Pan head screw (M4 × 18) 5	Hexagonal torque wrench (3 mm) 1
	hexagonal socket head bolt (M8 × 20) 4	Wall-hanging bracket mounting sheet 1

Caution:

- Mounting should be done by a qualified technician.
- Make sure that the mounting (wall) area has sufficient strength.
- Read the enclosed mounting instructions thoroughly before starting.
- Do not use an electric screwdriver or impact driver to tighten screws. Use a torque driver or hexagon torque wrench and tighten screws to the torque specified in the instructions.
- When the product is no longer going to be used, have it disposed of quickly by a professional disposal service.

Dimensions

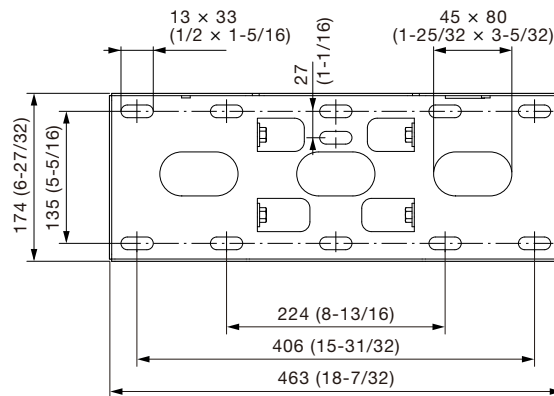


The illustration shows the wall-hanging bracket attached to the projector.

unit : mm (inch)
NOTE: This illustration is not drawn to scale.

Dimensions

- Wall-hanging bracket



unit : mm (inch)
 NOTE: This illustration is not drawn to scale.

Weights and dimensions shown are approximate.
 Specifications and appearance are subject to change without notice.