

Ceiling mount bracket for high ceilings

Description

This ceiling mount bracket is used when mounting a PT-DZ8700, PT-DZ110X or other 3-chip DLP™ projector to high ceilings.

Specifications	Vertical correction angle:	+5°, -17°
	Horizontal slant correction angle:	±2.5°
	Horizontal turn correction angle:	±1.2°
	Dimensions (W × H × D):	380 × 340–420 × 411 mm (14-31/32" × 13-3/8"–16-17/32" × 16-3/16")
	Weight:	10.1 kg (22.3 lbs)

DLP and the DLP logo are trademarks of Texas Instruments.
Weights and dimensions shown are approximate. Specifications subject to change without notice.

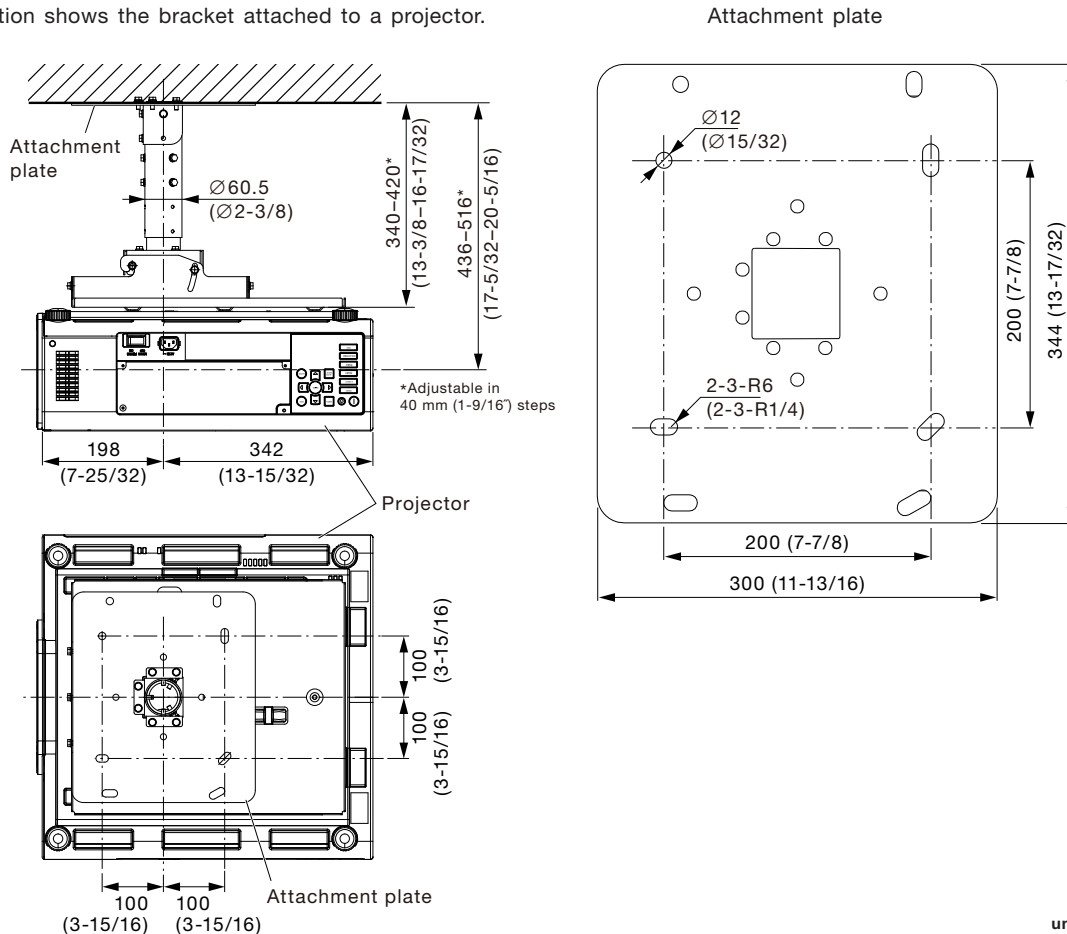
Parts	Attachment plate 1	Pole support bracket 2 1
	Projector mount bracket 1	Washer-fitted hexagonal bolts (M6 × 80) 2
	Adjuster pole A 1	Washer-fitted hexagonal bolts (M6 × 16) 35
	Adjuster pole B 1	Washers (M6) 2
	Angle adjuster 1	Hexagonal nuts (M6) 2
	Pole support bracket 1 1		

Caution:

- Mounting should be done by a qualified technician.
- Make sure that the mounting (ceiling) area has sufficient strength.
- Read the enclosed mounting instructions thoroughly before starting.
- When the product is no longer going to be used, have it disposed of quickly by a professional disposal service.
- Do not use an electric screwdriver or impact driver to tighten screws. (Use a torque driver or similar tool.)

Dimensions

Illustration shows the bracket attached to a projector.



unit : mm (inch)
NOTE: This illustration is not drawn to scale.