

Ceiling mount bracket

Description

The ceiling mount bracket is to be used when mounting the PT-LB2 or other projector to the high ceiling.

Specifications	Vertical correction angle:	+5°, -20°
	Horizontal slant correction angle:	±10°
	Horizontal turn correction angle:	±5°
	Dimensions (W × H × D):	260 × 296–376 × 172 mm (10-1/4" × 11-21/32"-14-13/16" × 6-25/32")
	Weight:	2.4 kg (5.3 lbs)

Note: Height (H) include holding brackets.

Weights and dimensions shown are approximate. Specifications subject to change without notice.

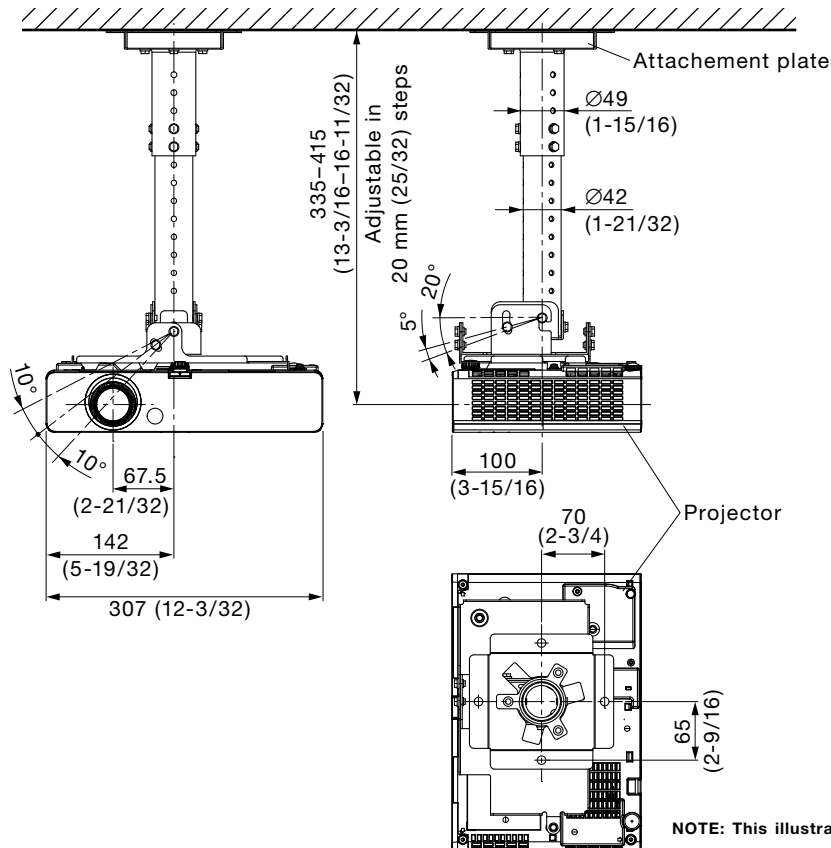
Parts	Attachment plate1	Washer-fitted hexagonal bolts (M6 × 12)19
	Projector mount bracket1	Washer-fitted screws (M4 × 10)3
	Adjuster pole A1	Wire rope1
	Adjuster pole B1	Flat wire clip2
	Angle adjuster A1	Clamp tube2
	Angle adjuster B1		

Caution:

- Mounting should be done by a qualified technician.
- Make sure that the mounting (ceiling) area has sufficient strength.
- Read the enclosed mounting instructions thoroughly before starting.
- Do not use an electric screwdriver or impact driver to tighten screws. Use a torque driver or hexagon torque wrench and tighten screws to the torque specified in the instructions.
- When the product is no longer going to be used, have it disposed of quickly by a professional disposal service.

Dimensions

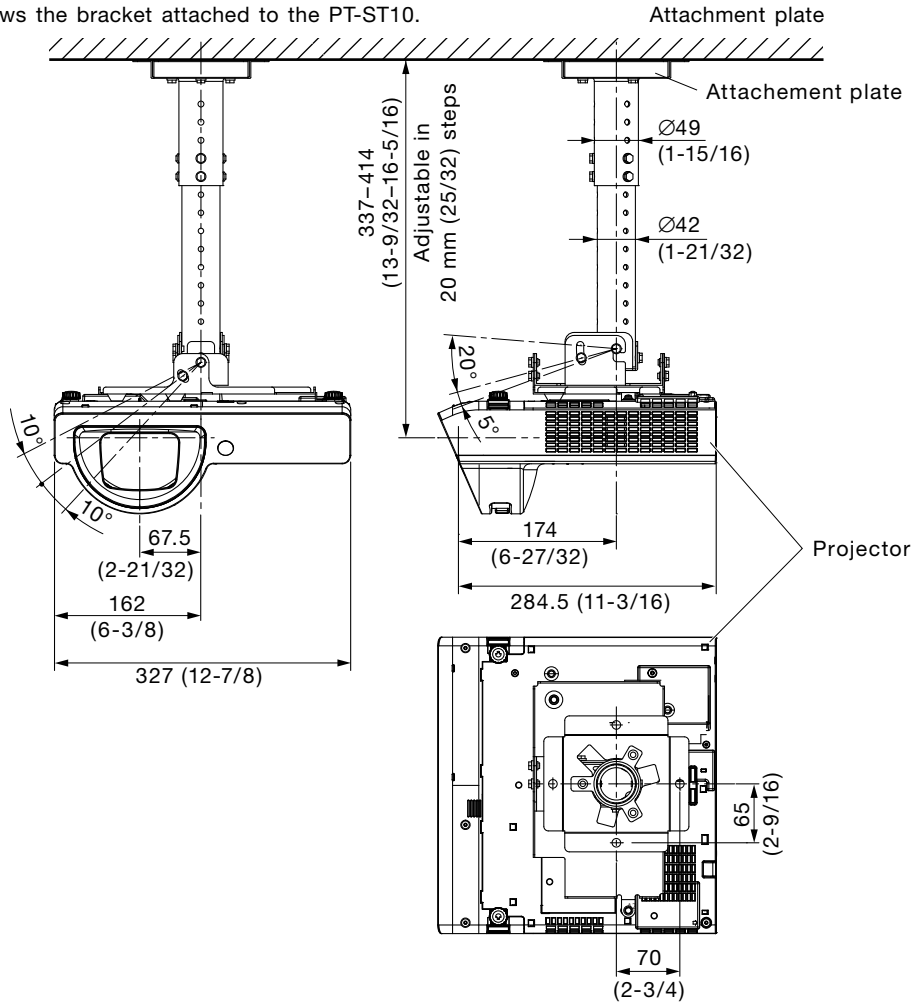
Illustration shows the bracket attached to the PT-LB2/LB1.



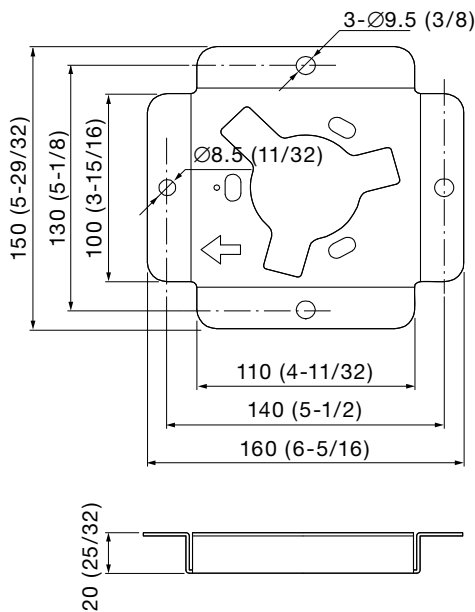
unit : mm (inch)
NOTE: This illustration is not drawn to scale.

Dimensions

Illustration shows the bracket attached to the PT-ST10.



Attachment plate



unit : mm (inch)

NOTE: This illustration is not drawn to scale.