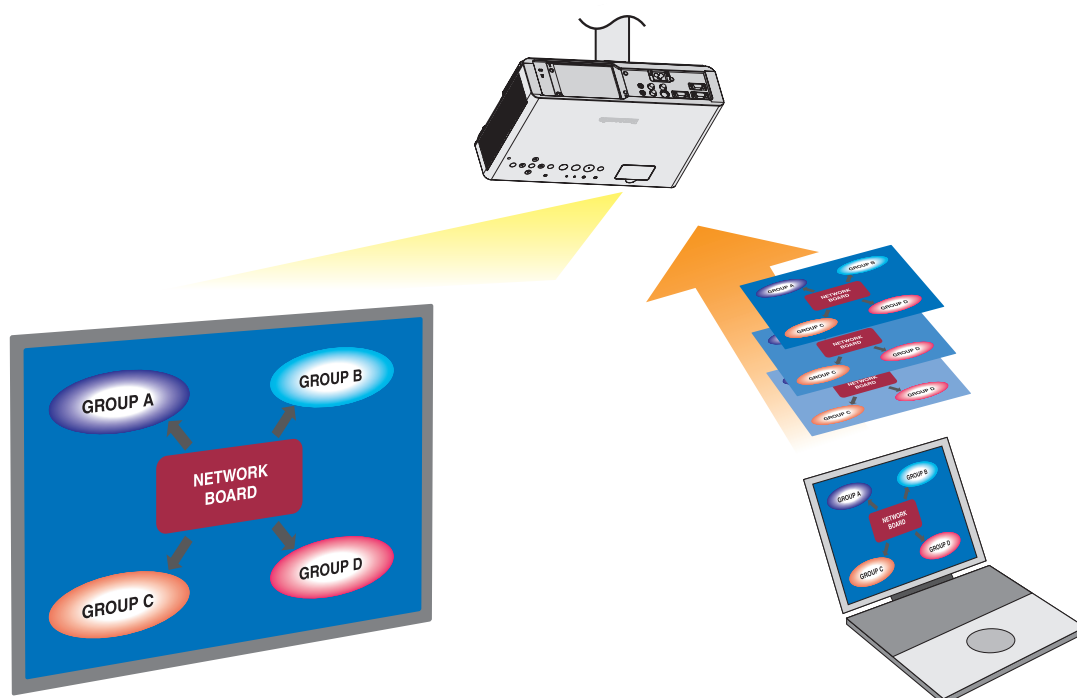


Windows

Panasonic[®]

Network Function Edition

(Wireless Manager ME 5.0)



Contents

Software Licensing Agreement	3	What you can do with Wireless Manager mobile edition 5.0...	7
Notes on Using Wireless Connection	4	Check your computer	10
Request Regarding Security	6	Necessary environment for computers to be connected	10
Software Installation	11	Contents on Provided CD-ROM	12
System requirements	11	Wireless Manager ME 5.0	12
Installation free set up	13		
Connect.....	14	Connecting through the access point	23
Easy Wireless Set Up	14	When logging on without administrator authority	24
“S-MAP” Connection	14	When using Windows Vista.....	26
“1-4/U” Connection	16	When the user has the computer administrator authority	26
“PC Search” Connection	19	When logging on without administrator authority	26
Connection error messages	21		
Selecting the connection method	29		
Other operations for connection	30	Other search	30
Operations when password entry is required for connection...	30	Canceling the connection	32
Various projection methods	33	4-screen multi style	37
Description of the launcher.....	33	4-screen index style.....	38
Live mode.....	35	16-screen index style	40
Multi live mode	36	Multiple Source Live Mode	41
Switching from one style to another	36	Multiple Source Multi Live Mode	43
Useful Functions	45	AV mute function	47
Selective area transmission	45	Pointer function	47
Secondary display transmission	46	Functions used with each projection method	48
Secondary viewer.....	46		
Setting options	49	Key setting.....	50
Setting option window	49	Other	51
Transmission.....	49	Version information	51
Network/Security setting of the projector	52	Changing the projector name.....	56
Displaying the Wireless Menu	52	Password setting	56
Changing the network number	53	Network standby	57
[USER] settings	53	Live mode cut-in.....	57
IP address settings	53	Verifying settings	58
Wireless settings	54	Returning to the initial settings	58
Default settings of [USER1] - [USER3].....	55		
Using WebBrowser	59	Projector control window.....	62
Before using the WebBrowser control	59	Detailed settings window	63
Accessing from the WebBrowser	60	Switching Languages	64
Monitor information window	61		
Software Uninstall	65	Wireless Manager ME 5.0.....	65
Glossary	66	Frequently Asked Questions	68

Software Licensing Agreement

Use of this Software is governed by the terms defined in this Software Licensing Agreement.

● Article 1 License

Licensee is granted the right to use this software, including the information recorded or described on the CD-ROM and in the instruction manual and any other media provided to the Licensee (collectively "Software"), but all applicable rights to copyright or intellectual property in the Software are not transferable to the Licensee.

● Article 2 Use by a Third Party

Licensee may not transfer or allow any third party, to use or copy the Software, whether free of charge or not.

● Article 3 Restrictions on Copying the Software

Licensee may make a single copy of the Software in whole or in part solely for backup purposes.

● Article 4 Computer

Licensee may install and use the Software on more than one computer owned or managed by Licensee.

● Article 5 Reverse Engineering, Decompiling or Disassembly

Licensee may not reverse engineer, decompile or disassemble the Software. Matsushita shall not be bound by warranty for any defects in the Software caused by Licensee's reverse engineering, decompiling or disassembly of the Software. Furthermore, Matsushita or its distributors or dealers will not be responsible for any damage to the Licensee caused by Licensee's reverse engineering, decompiling or disassembly of the Software.

● Article 6 After-sales Service

If a problem should occur with the Software while Licensee is using the Software, Licensee should notify Matsushita of the problem by telephone or letter. Matsushita shall undertake to notify Licensee of whether the problem is a known error in the program ("bug"), or whether the way in which the Software is to be used should be modified. Furthermore, the Software is subject to revision without prior notice.

● Article 7 Indemnification

Matsushita's liability with respect to this Software is limited to the conditions defined in Article 6 herein. Matsushita or any of its distributors or dealers shall not be liable for any damage suffered by Licensee, either directly or through claims from a third party, arising from or in connection with Licensee's use of the Software. Furthermore, Matsushita makes absolutely no warranty for the use of this Software for any purpose other than for applications associated with the projector with which this Software is bundled.

● Article 8 Export Control

Licensee agrees not to export or re-export the Software to any country other than the country of purchase of the projector in any form without the appropriate export licenses under the regulations of the country where Licensee resides or of any other country as may be required by such export or re-export.

Wireless Manager ME 5.0 uses the following software:

Portion of this software are based in part on the work of the Independent JPEG Group

Please note the following.

- Panasonic cannot be held liable for any direct or indirect damages resulting from the use or malfunction of this projector.
- Panasonic cannot be held liable for damages arising from data corruption or loss as a result of using this projector.

Notes on Using Wireless Connection

Wireless connection function of the projector uses radio waves in the 2.4 GHz band.

A radio station license is not required, but be sure to read and fully understand the following items before use.

■ Do not use near other wireless equipment.

The following equipment may use radio waves in the same band as the projector.

When the projector is used near these devices, radio wave interference may make communication impossible, or the communication speed may become slower.

- Microwave ovens, etc.
- Industrial, chemical and medical equipment, etc.
- In-plant radio stations for identifying moving objects such as those used in factory manufacturing lines, etc.
- Designated low-power radio stations

■ If at all possible, avoid the use of cellular phones, TV sets or radios near the projector.

Cellular phones, TV sets, radios and similar devices use different radio bands from the projector, so there is no effect on wireless communication or the transmission and reception of these devices. However, radio waves from the projector may produce audio or video noise.

■ Wireless communication radio waves cannot penetrate steel reinforcements, metal, concrete, etc.

Communication is possible through walls and floors made from materials such as wood and glass (except glass containing wire mesh), but not through walls and floors made from steel reinforcements, metal, concrete, etc.

■ Avoid using the projector in locations prone to static electricity.

If the projector is used in a location prone to static electricity, such as on a carpet, the wireless LAN connection may be lost.

If this happens, eliminate the source of static electricity or electromagnetic noise and reconnect to the wireless LAN.

In rare cases static electricity or electromagnetic noise may make it impossible to establish a connection to the LAN.

If this happens, press the power button on the remote control or on the projector to power off the projector temporarily.

After the cooling fan stops operating (after the power monitor on the projector changes from orange to red), power on the projector and reconnect to the LAN.

■ Using the projector outside the country

It is forbidden to take the projector outside the country or region where you purchased it, so use it only in the said country or region. Also, note that depending on countries or regions there are restrictions on the channels and frequencies at which you can use the wireless LAN.

Notes on Using Wireless Connection (cont.)

■ Channels that can be used

The channels (frequency range) that can be used differ according to the country or region. Refer to the table below.

Country or region	Standard	Channels used	Frequency band (Center frequency)
Japan	ARIB STD-T66	1 - 13	2,412 MHz - 2,472 MHz
China	SRRC		
England, Germany, France, Spain, Italy, Belgium, Austria, Sweden, Norway, Denmark, Switzerland, Holland, Finland, Portugal, Greece, Thailand, South Korea	ETSI 300.328		
Singapore	IDA		
Australia, New Zealand	C-Tick		
Malaysia	SIRIM		
United States	FCC part 15	1 - 11	2,412 MHz - 2,462 MHz
Taiwan	DGT		

Request Regarding Security

When using this product, security breaches of the type described below are conceivable.

- Leakage of your private information via this product
- Illegal operation of this product by a malicious third-party
- Harm to or cessation of operation of this product by a malicious third-party

Be sure to implement sufficient security measures.

- Make sure the password is as hard to guess as possible.
- Change the password periodically.
- Matsushita Electric Industrial Co., Ltd. and its affiliated companies never directly ask customers for their password. Do not give out your password even if directly asked by a third-party representing themselves as Matsushita Electric Industrial Co., Ltd.
- Always use on a network that has safety protection such as a firewall implemented.
- Set passwords, and limit the users that are permitted login access.

About Wireless LANs

The advantage of a wireless LAN is that information can be exchanged between a PC or other such equipment and an access point using radio waves as long as you are within range for radio transmissions.

On the other hand, because the radio waves can travel through obstacles (such as walls) and are available everywhere within a given range, problems of the type listed below may occur if security-related settings are not made.

- A malicious third-party may intentionally intercept and monitor transmitted data including the content of e-mail and personal information such as your ID, password, and/or credit card numbers.
- A malicious third-party may access your personal or corporate network without authorization and engage in the following types of behavior.
 - Retrieve personal and/or secret information (information leak)
 - Spread false information by impersonating a particular person (spoofing)
 - Overwrite intercepted communications and issue false data (tampering)
 - Spread harmful software such as a computer virus and crash your data and/or system (system crash)

Since most wireless LAN cards or access points are equipped with security features to take care of these problems, you can reduce the possibility of these problems occurring when using this product by making the appropriate security settings for the wireless LAN device.

Some wireless LAN devices may not be set for security immediately after purchase. To decrease the possibility of occurrence of security problems, before using any wireless LAN devices, be absolutely sure to make all security-related settings according to the instructions given in the operation manuals supplied with them.

Depending on the specifications of the wireless LAN, a malicious third-party may be able to break security settings by special means.

Please contact Panasonic if you need help taking care of security settings or other such.

If you cannot perform security settings for your wireless LAN by yourself, please contact the Panasonic Support Center.

Panasonic asks customers to thoroughly understand the risk of using this product without making security settings, and recommends that the customer make security settings at their own discretion and responsibility.

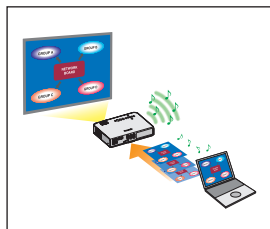
What you can do with Wireless Manager mobile edition 5.0

● Network Transmission

You can connect the projector to a computer via the wireless LAN and send still images.
Refer to page 14 for details on how to connect.

● Project with various methods

<Live mode> (See page 35)



Used for normal presentations.

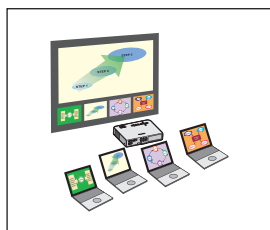
<Multi live mode> (See page 36)

<4-screen multi style> (See page 37)



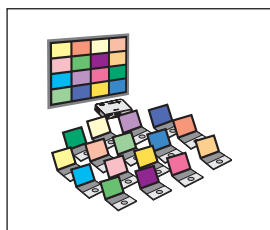
Used for presentations involving multiple computers.

<4-screen index style> (See page 38)



This style is convenient in cases where you wish to focus attention on one of four presentations displayed simultaneously.

<16-screen index style> (See page 40)

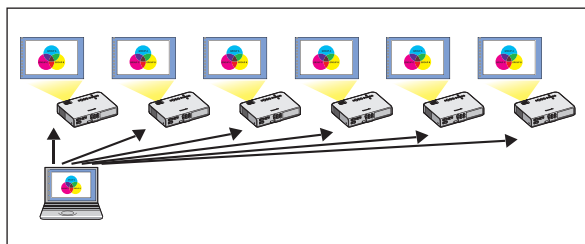


This style is convenient in cases where you wish to display a large number of presentations as a list.

What you can do with Wireless Manager mobile edition 5.0 (cont.)

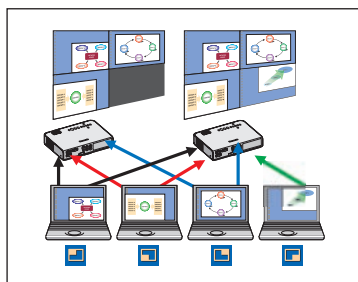
● Project with multiple projectors

<Multiple source live mode> (See page 41)



This arrangement can be used when a number of projectors are installed in a large conference room, or when holding simultaneous presentations in several conference rooms, for example.

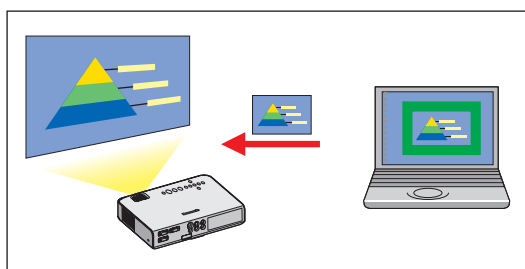
<Multiple source multi live mode> (See page 43)



This arrangement can be used when you wish to simultaneously display multiple presentations using multiple projectors.

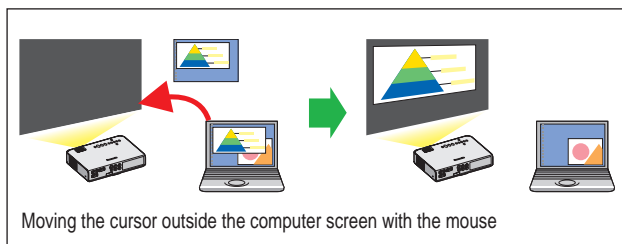
● Useful functions

<Selective area transmission> (See page 45)



By using the selective area window, you can specify the necessary information alone from the computer screen, and display it on the projection screen.

<Secondary display transmission> (See page 46)



You can set the computer screen and the projector screen to the multi-monitor mode, and use the computer screen as the primary monitor and the projector screen as the secondary monitor. This is convenient for when holding a presentation using the projector screen while displaying reference material on the computer screen.

Note

For details on the secondary display transmission function, see the application section for the secondary display transmission function in the instruction manual.

Note

For a list of functions and projectors that can be connected to Wireless Manager ME 5.0, see "Functions used with each projection method" (Page 48).

What you can do with Wireless Manager mobile edition 5.0 (cont.)

<WebBrowser control> (See page 59)

The following operations are possible when using WebBrowser.

- Setting and adjusting the projector
- Displaying the projector status

<Virtual remote control function> (See page 34)

The following operations are possible when using remote control.

- Same operations as the wireless remote control, but from the computer
- Changing the channels
- Turning the power on and off

<One-click Connection> (See page 32)

You can connect to the projector by double-clicking or using drag-and-drop.

<Live mode cut-in function> (See page 57)

During live mode or multi live mode, a different computer can interrupt and project images in live mode.

Check your computer

Necessary environment for computers to be connected

- First, check your computer to see whether or not it has a built-in wireless LAN* function. ※LAN : “Glossary” (See page 66)
- Before connecting the projector to the computer, be sure to check the following settings.
- Operation is not guaranteed for all wireless LAN cards and built-in wireless LAN adapters.

Check 1 Wireless LAN settings

<Computer with a built-in wireless LAN function>

- Is your wireless LAN switched on?

<Computer without a built-in wireless LAN function>

- Is your wireless LAN card properly recognized?
- Is the wireless LAN card switched on?
- Install the wireless LAN card driver beforehand. For details on how to install the driver, refer to the instructions accompanying the wireless card.

Check 2 Logon user's settings

- Have you logged in as the Administrator?

Check 3 Computer's settings

- When security (firewall) software and utilities for network cards are installed, these may prevent connection of the projector.

<Windows XP/Windows Vista>

- Is Network Bridge enabled? (See page 69)
- Has your firewall been disabled? (See page 70)

Software Installation

System requirements

The computer must meet the following requirements in order to use the supplied software.

OS:	Microsoft Windows 2000 Professional SP4/XP Home Edition/XP Professional Microsoft Windows Vista™ Ultimate 32 bit/Vista™ Business 32 bit Microsoft Windows Vista™ Home Premium 32 bit/Vista™ Home Basic 32 bit
CPU:	Intel® Pentium® III 800 MHz or faster, or compatible processor (1 GHz or faster is recommended when using live mode)
RAM:	256 MB or more
Empty hard disk capacity:	60 MB or more
Hardware conditions:	CD or DVD drive (for software installation and viewing the user's manual) An IEEE802.11 b/g built-in wireless LAN system or an IEEE802.11 b/g wireless LAN adapter must be installed and running properly. However, some IEEE802.11 b/g wireless LAN may not allow connection to IEEE802.11 g projectors.
WebBrowser:	Internet Explorer 6.0 or newer Netscape Communicator 7.0 or newer

Note

Note that operation is not guaranteed when used with system environments other than the above or on homemade computers.

■Precautions when using Windows Vista

- The following limitations apply to displaying Launcher on the projection screen.
 - Software installed: Launcher is displayed.
 - Software not installed: Launcher is not displayed.

Operation is not guaranteed for all computers that meet the above conditions.

Note

The illustrations and screenshots in this manual may be different from those on your computer.

Software Installation (cont.)

Contents on Provided CD-ROM

When inserting the provided CD-ROM into the computer, the installer starts up automatically and the following screen appears.



Notes

- Shut down all software currently active on Windows. Otherwise, installation may not be possible.
- Administrator authority is required for installation.
- If the installer does not start up automatically, double-click [EasyInstall] → [Easy_Inst.exe] in the CD-ROM.
- If Wireless Manager ME 1.0, 2.0, 3.0, 4.0 or 4.5 has been installed, uninstall it by following the method below.
From the desktop, select [Start] → [All Programs] → [Panasonic Wireless Display] → [Uninstall Wireless Manager mobile edition *.*]. (*.* in the menu is 1.0, 2.0, 3.0, 4.0 or 4.5)
Follow the instructions appearing on the screen and uninstall the software.
- If Wireless Manager is used immediately after installation, some functions (secondary display transmission, etc.) may not work.
In such a case, restart the computer once and then use Wireless Manager.

Wireless Manager ME 5.0

This software is used to send screen images from a computer to the projector via a wireless LAN.

1 Click [1. Wireless Manager ME 5.0].

Follow the instructions on the screen and install the software.

Installation free set up

You can use Wireless Manager ME 5.0 without installing it in the computer.

If you copy Wireless Manager ME 5.0 to a removable medium, such as an SD card, you can use Wireless Manager ME 5.0 without installing it in any computer that permits you to access this removal medium.

Note

When copying Wireless Manager ME 5.0 to a removable medium, empty capacity of at least 32 MB is required.

1 Insert provided CD-ROM into the CD-ROM drive.

Setup screen appears.

2 Click [Installation Free Set Up].

[Direct CD-ROM Startup] and [Other Media Source Startup, Make Copy Here] appear on the window.

3 (A) When using without copying the program: Click [Direct CD-ROM Startup].

Wireless Manager ME 5.0 starts up, and the <Projector Search> window appears.

Operation is the same as when operating after installing CD-ROM.

(B) When using after copying the program: Click [Other Media Source Startup, Make Copy Here].

A window opens to select the destination to save.

<If you chose (B) in step 3, follow steps 4 - 5.>

4 Select the destination to save, and click [OK].

CD-ROM data is copied to the destination.

After the copy ends, click [Close] of the setup screen.

5 Double-click the Wireless Manager ME 5.0 icon (WM.exe) in the destination to save chosen in step 4.

Wireless Manager ME 5.0 starts up.

Operation is the same as when operating after installing CD-ROM.

If selecting removable medium as the destination to save, ensure that the removable medium is recognized by the computer to which you wish to connect the projector.

Some removable mediums start the program automatically.

Notes

- When using without installing, following functions are not available.
 - Secondary display transmission (See page 46)
 - Producing audio along with video at live mode (See page 49)
 - Automatic connection by double-clicking (See page 51)
 - Operation is slower compared to when the computer is used with Wireless Manager ME 5.0 installed.
- If you have logged on without administrator authority or as a [GUEST], you cannot use network numbers [1]-[4] for easy wireless set up. If you need to connect using a wireless LAN connection, use [USER] as the network number.

Connect

Easy Wireless Set Up

There are 3 different connection methods, "S-MAP" (Projector Signal Map) Connection, "1-4/U" Connection, and "PC Search" Connection.

(When using Easy Wireless Set Up to connect to a conventional model projector, use "1-4/U" Connection (see page 16).)

- [S-MAP] Connection: Search and connect to the projectors set up using [Network Number] [S-MAP] (see page 53). The projectors that can be connected to are displayed in order of wireless reception strength (see page 14).
- [1-4/U] Connection: Search and connect to the projectors set up using [Network Number] [1]-[4] or [USER1]-[USER3]. Projectors that can be connected to are displayed in a list (see page 16).
- [PC Search] Connection: Use the [Computer search] function on the projector to search and connect (see page 19).

"S-MAP" Connection

1 Click on the desktop.

Alternatively, select [Start] → [All Programs] → [Panasonic Wireless Display] → [Wireless Manager mobile edition 5.0].

<Projector search> window – [S-MAP] is displayed.


• When the <Input User Name> window appears

Set the icon and user name, and click [OK].

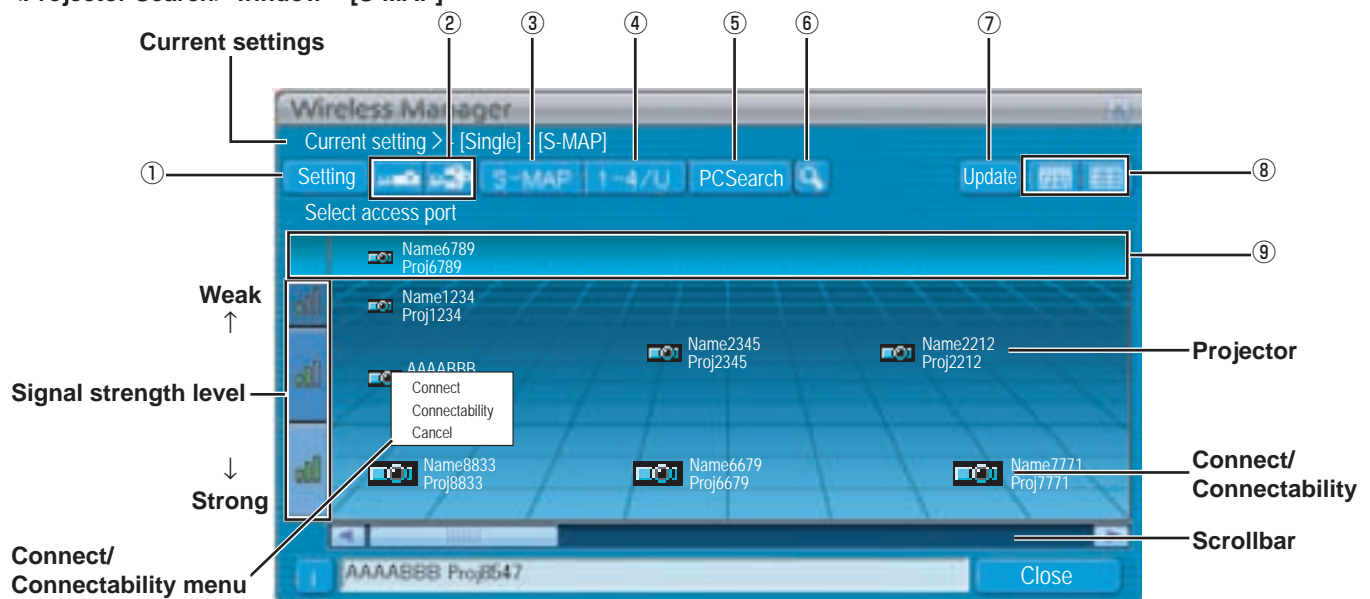


2 Select and click the icon of the projector you want to connect to.

The Connect/Connectability menu is displayed.

 is displayed in the selected projector.



<Projector Search> window – [S-MAP]



① Setting menu display

You can choose to display or hide the ② ~ ⑥ buttons.

② Access Devices (See page 43)

When only one projector is connected, select . When multiple projectors are connected, select .

③ S-MAP (See page 14)

Display <Projector Search> window – [S-MAP].

④ 1-4/U (Upper figure) (See page 16)

Display <Projector Search> window – [1-4/U].

⑤ PC Search (See page 19)

Display <PC Search> window.

⑥ Other search (See page 30)


From the projectors that are currently switched on, search for the projector of specified IP address, domain name, and ID. (From all network numbers except for [USER])

⑦ Update the connection status display

Update the connection status display.

⑧ Switching Display Window

 : <Projector Search> window – [S-MAP] is displayed.

 : <Projector Search> window – [S-MAP] (list display) is displayed. (See page 15)

⑨ Found projectors

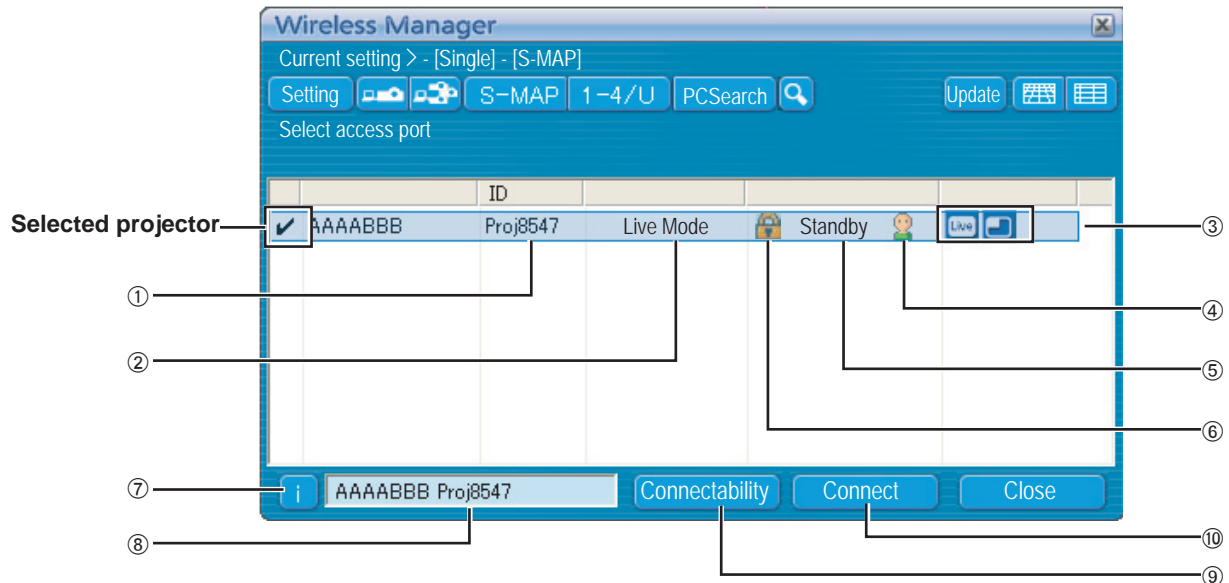
- Projector found on a wired LAN
- Projector found using [USER]
- Projector found using the currently selected [NETWORK] number

Connect (cont.)

Notes

- The "Signal strength level" is just a guide. As differences occur due to conditions such as the communication environment, this does not always display accurate values.
- Enter the user name in up to 8 alphanumeric.
- The icon and user name are set when Wireless Manager ME 5.0 is first launched.
- The icon and user name settings can be changed in the <Option> window. (See page 49)

<Projector Search> Window – [S-MAP] (List display)



- ① **ID** (See page 30)
Display projector's ID.
- ② **Mode** (See page 35)
Display projector's mode or style.
- ③ **Available modes and functions**
Unavailable modes/functions among [Live mode] and [Multi live mode] are displayed with overlaid on them.
- ④ **The number of people connected to this projector**
Display the number of people that are connected to this projector.
- ⑤ **The status of this projector**
Display the projector's connection status.
- ⑥ appears when password entry is needed for connection. (See page 30)
- ⑦ **Connection message**
Blinks when connection is not possible. Click to display information on resolving the issue. (See page 21)
- ⑧ The [Projector Name] of the selected projector and the name given in the favorites are displayed (see page 51). Guides for the operating status and connection method etc are also displayed.
- ⑨ **Connectability**
The projector name and ID are displayed at top left of the selected projector screen. If the projector name and ID are displayed correctly, the message "Projector is available." will appear on the computer screen.
- ⑩ **Connection**
Connect to the selected projector.

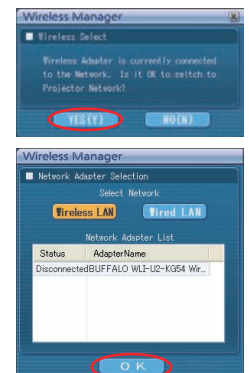
3 Select and click [Connections].

- If the <Confirmation Dialog> box is displayed
Click [Yes(Y)].

- When the <Network Adapter Selection> window appears
Select the adaptor and click [OK].
If the <Confirmation Dialog> box is displayed, click [Yes].

Notes

- For details on how to connect, refer to page 29.
- The following models are compatible with the wired LAN communication that can be used with this Software.
PT-F100NT, PT-FW100NT, PT-F200NT
- When enabling a network adapter, first exit Wireless Manager and then enable the network adapter.



Connect (cont.)

4 Connection completed.

When the connection with the projector is established, the launcher appears. ("Description of the launcher" → See page 33)




Notes

- The launcher is not projected on the projector. However, if you are using Windows Vista, the installed launcher is projected.
- If you cannot connect the projector and computer using Easy Wireless Setup (see page 68).
- Set the projector to which Wireless Manager ME5.0 connects to automatically when it is started (see page 51)
- Connection error message (see page 21)

"1-4/U" Connection

Select the projector to connect from the computer.

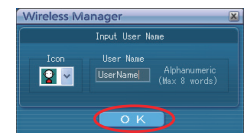
(The projectors that can be connected to are displayed in a list. You can search for and select the projector that you want to connect to using easy set up.)

- 1 Click  on the desktop, or select [Start] → [All Programs] → [Panasonic Wireless Display] → [Wireless Manager mobile edition 5.0].

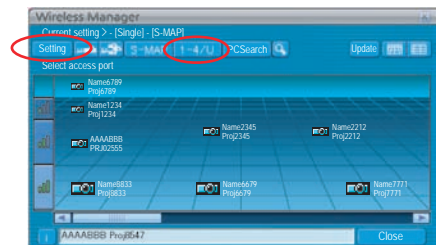
<Projector search> window – [S-MAP] is displayed.

- When the <Input User Name> window appears

Set the icon and user name, and click [OK].

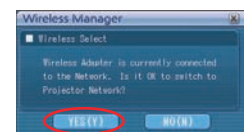


- 2 Click [Setting ►], and click [1-4/U] in the setting menu.



- When the <Confirmation dialog> box appears

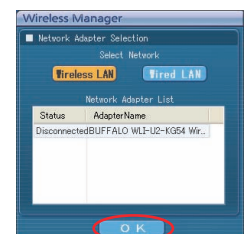
Click [Yes].



- When the <Network Adapter Selection> window appears

Select the adaptor that you want to connect to the projector from the list, and click [OK].

If the <Confirmation dialog> box appears, click [Yes].



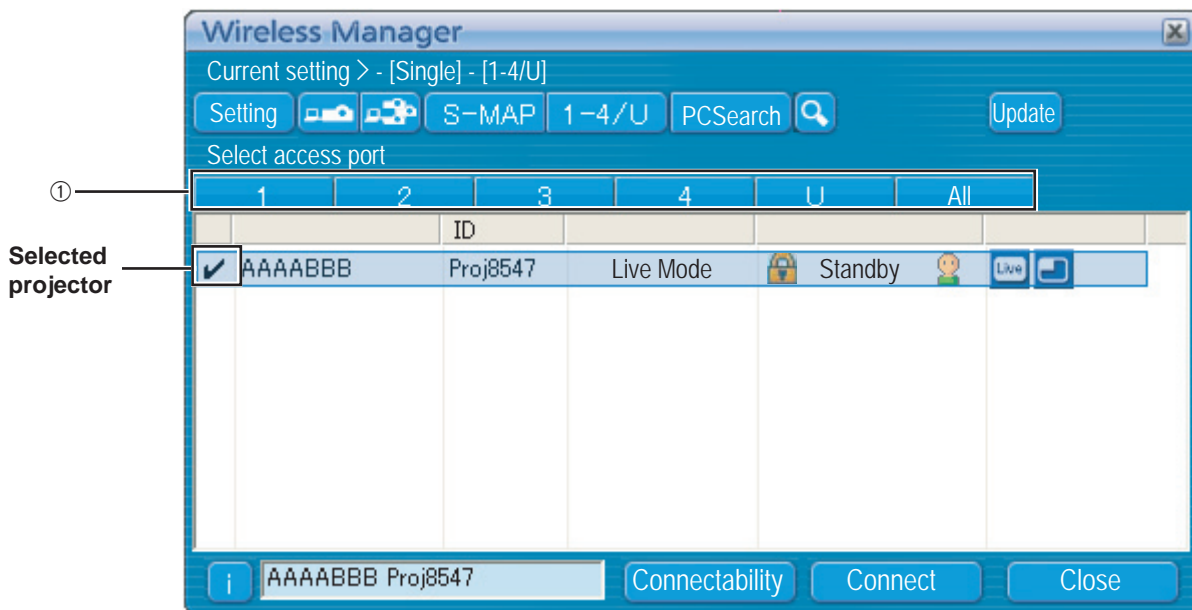
Notes

- For details on how to connect, refer to page 29.
- Enter the user name in up to 8 alphanumeric.
- The icon and user name are set when Wireless Manager ME 5.0 is first launched.
- The icon and user name settings can be changed in the <Option> window. (See page 49)
- The following models are compatible with the wired LAN communication that can be used with this Software.
PT-F100NT, PT-FW100NT, PT-F200NT, PT-FW200NT
- When enabling a network adapter, first exit Wireless Manager and then enable the network adapter.

Connect (cont.)

3

A list of projectors that can be connected to are displayed in the <Projector Search> window – [1-4/U].



① "Network" number

When you specify the network number (See page 53) set on the projector from [1], [2], [3], [4], [USER]^{※1}, and [Display all], all projectors that are presently switched on in the selected network number are displayed in [Projector Name]. The initial value for both the computer and the projector is [S-MAP]^{※2}.

※1

- In the following situations, connections other than [USER] are not possible.
 - Not logged in with Administrator authority
 - When using Windows Vista
- Depending on the computer and wireless LAN card used, Easy Wireless Set Up may not be possible. If this is the case, the [Network] number of <Projector search> window automatically switches to [USER]. For details of the connection procedure, first close Wireless Manager ME 5.0, and then refer to pages 24 - 28.

※2

- The initial network number for both the projector and Wireless Manager ME 5.0 is [S-MAP]. These numbers must match for the connection. To check the network number, refer to the network menu of the projector.
- When importance is placed on security, select the network number [2] - [4], because WEP (wireless communication encryption)[※] is set on these network numbers.
- Important video/audio data is protected because AES[※] encryption processing takes place in advance for all network numbers, even if [ENCRYPTION] is set to [NONE].
- Other network adapters may not be usable under Easy Wireless Set Up connections.
- Connections to other networks connected through the wireless LAN card are broken under Easy Wireless Set Up connections.

※ "Glossary" (See page 67)

Note

For details of other button operations, see [S-MAP] Connection (pages 14-15).

Connect (cont.)

4 Select the same network number (1 - 4) from the [Network] number as is displayed in the ① [NETWORK] menu (See page 53) of the projector you want to connect to.

Projectors powered on in the chosen network group are listed.

5 Select the desired projectors, and click [Connections].

The launcher appears and the connection with the projector is established.
("Description of the launcher" → See page 33)




Notes

- Launcher is not displayed on the projection screen. However, in Windows Vista, Launcher is displayed if the software is installed.
- If you cannot connect the projector and computer using Easy Wireless Setup (see page 68).
- Set the projector to which Wireless Manager ME5.0 connects to automatically when it is started (see page 51)
- Connection error message (see page 21)

Connect (cont.)

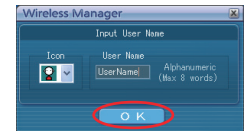
“PC Search” Connection

- 1 Click  on the desktop, or select [Start] → [All Programs] → [Panasonic Wireless Display] → [Wireless Manager mobile edition 5.0].

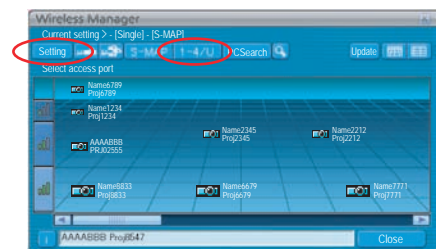
<Projector search> window – [S-MAP] is displayed.

- When the <Input User Name> window appears

Set the icon and user name, and click [OK].

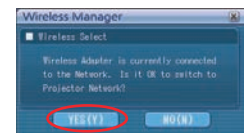


- 2 Click [Setting ►], and click [PC Search] in the setting menu.



- When the <Confirmation dialog> box appears

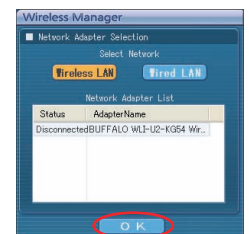
Click [Yes].



- When the <Network Adapter Selection> window appears

Select the adapter from the list and click [OK].

If the <Confirmation dialog> box appears, click [Yes].



Notes

- For details on the confirmation screen when connecting, refer to page 29.
- Enter the user name in up to 8 alphanumerics.
- The icon and user name are set when Wireless Manager ME 5.0 is first launched.
- The icon and user name settings can be changed in the <Option> window. (See page 51)
- When enabling a network adapter, first exit Wireless Manager and then enable the network adapter.

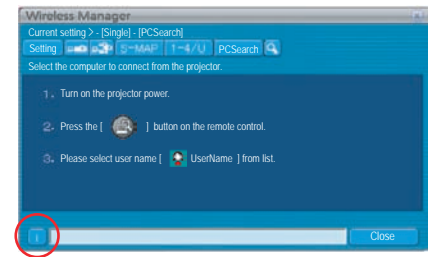
Connect (cont.)

3 Select the projector to connect.

<PC Search> window appears.

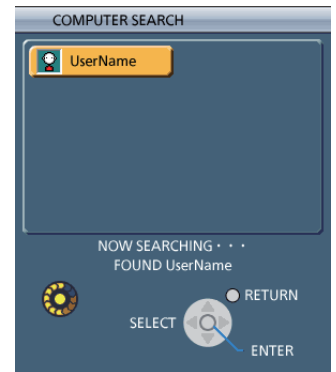
Note

Click on [i] in the <PC Search> window, and the models of projector that can perform [PC Search] are displayed.



Operations on the projector

- ① Turn on the power to the projector unit.
- ② Press the [COMPUTER SEARCH] button on the remote control.
The computers that can be connected to the projector are displayed in a list.
- ③ Select from the list displayed on the projector an item with the same icon/ user name as is displayed on the computer <PC Search> screen.



4 Connection completed.

When the connection with the projector is established, the launcher appears.
("Description of the launcher" → See page 33)

Note

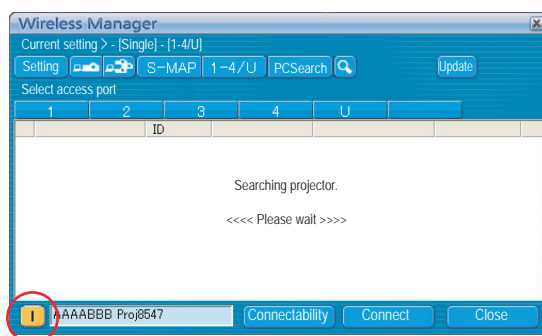
The launcher is not projected on the projector.
However, if you are using Windows Vista, the installed launcher is projected.



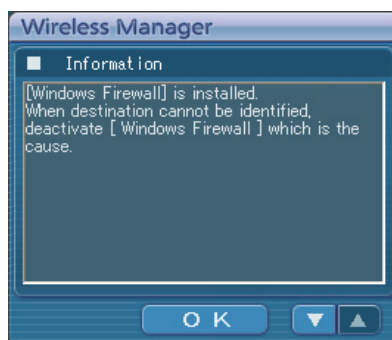
Connect (cont.)

Connection error messages

When wireless LAN connection cannot be established, [i] blinks in the bottom left of the <Projector Search> window.



Click the [i] button at this time to display information on resolving the issue as shown below.



The displayed information is as follows.

Detected issue	Displayed information	Remarks	Reference page
A firewall or network bridge is detected	[****]* is installed. When destination cannot be identified, deactivate [****] which is the cause.	<ul style="list-style-type: none"> • Has your firewall in Windows XP been disabled? • Is Wireless Manager ME 5.0 registered in [Exceptions] ([Control Panel] → [Security Center] → [Windows firewall]) with the Windows XP SP 2? • Is this software registered in the [Exceptions] tab in [Control Panel] – [Windows Firewall] – [Allow program through Windows firewall] in Windows Vista? • Are any firewall-containing applications installed? • If you do not expect ever to use Network Bridge and see no need for it, delete it from your system. 	P.69 - P.71

※ “Windows Firewall”, “Network Bridge” and other security software found will appear in [****].

Connect (cont.)

Detected issue	Displayed information	Remarks	Reference page
When a change in the settings made by the utility has been detected	The settings of Wireless Network connection have been changed. When a Wireless LAN Card utility or any other utilities are active, stop the operation of such utilities, then restart the Wireless Manager ME 5.0.	The wireless LAN card utility used by the computer may have changed the wireless settings. Close the utility, and then make the connection again using Easy Wireless Set Up connection.	—
When a setting error for the wireless LAN card has been detected	No response from the wireless LAN card. Check the followings: - Wireless LAN Card conditions - Driver version (Latest)	<ul style="list-style-type: none"> • Is the wireless LAN card effective? • Is your wireless LAN card properly recognized? • Some wireless LAN cards may allow Easy Wireless Set Up connections to function if drivers are updated. 	P.68
When the user does not have the administrator authority	Please execute "Easy Connection" using the administrator authorization mode.	If you have logged in as a user that does not have administrator permission or as [GUEST], you cannot use easy wireless setup [S-MAP]/network numbers [1]-[4]. If you must perform Easy Wireless Set Up without administrator authority, designate [USER] as the network number.	P.24/P.26
Issues other than the above	Please perform the following checks, when the projector cannot be found. [Projector setup] (1) Is the power on for the projector? (2) Is the Network capability on? (3) Has the network channel number correctly been set up? [Computer setup] (1) Is Wireless capability on? (2) Is the Firewall application causing a network block?		

Connect (cont.)

Connecting through the access point

You can make the setting for infrastructure mode* (connection through the access point*); however, confirm to your system administrator on network settings before changing any settings.

※“Glossary” (See pages 66 - 67)

① Projector settings

- 1** Turn on the projector and press the [NETWORK] button on the remote control.
- 2** Select [USER 1] - [USER 3] from [NETWORK] at the wireless menu and press the [ENTER] button.
- 3** Set the details of network and select [OK].
As for network setting items, see pages 53 - 55.
Confirm to your system administrator on network settings before changing any settings.

Note

The projector's MAC address* can be checked with [STATUS] in the wireless menu of the projector unit.
("Verifying settings" → see page 58) ※“Glossary” (See page 66)

② Computer settings

- 4** Turn on the computer.
- 5** Make the network setting according to your system administrator.
- 6** Connect to your access point.
- 7** Start Wireless Manager ME 5.0.
A confirmation message appears asking whether to switch the projector to the network or not. Select [No].
- 8** Select the desired projector in the <Projector Search> window and click [Connections].
The launcher appears and the connection with the projector is established.
("Description of the launcher" → See page 33)

Note

If the projector is not displayed, click []. (See page 30)

Note

If you are unable to connect to the wireless LAN through the access point even after performing the steps in “① Projector settings,” contact the manufacturer of the access point.

Connect (cont.)

When logging on without administrator authority

Before starting Wireless Manager ME 5.0, it is necessary to carry out "Computer settings" (next page) under the administrator authority in advance.

Next, logon as a restricted user or [GUEST], and start Wireless Manager ME 5.0.

Confirm to your system administrator before changing any settings.

Following settings are examples of when using a default setting projector.

① Projector settings

- 1 Turn on the projector and press the [NETWORK] button on the remote control.
- 2 Select [USER 1] - [USER 3] from [NETWORK] at the wireless menu and press the [ENTER] button.
- 3 Set the details of network and select [OK].

As for network setting items, see pages 53 - 55.

Confirm to your system administrator before changing any settings.

<Example>

DHCP*	OFF
IP ADDRESS*	192.168.11.100
SUBNETMASK*	255.255.255.0
SSID*	Panasonic Projector
MODE	AD HOC*
AUTHENTICATION	OPEN* (Some computers may require connection by [SHARED*] authentication.)
ENCRYPTION	NONE..... When not performing encryption WEP..... When performing encryption
ENCRYPTION KEY SETTING	When [ENCRYPTION] setting is [WEP*]: DEFAULT KEY : Set 1 – 4 numerals for the default key. KEY 1 – 4 : Set these to match the WEP key registered in [DEFAULT KEY].

※"Glossary" (See pages 66 - 67)

Connect (cont.)

② Computer settings

4 Turn on the computer and log on with the administrator authority.

Click [Start] → [Control Panel] → [Network and Internet Connections] → [Network Connections], right click [Wireless Network Connections], and click [Properties], then <Wireless Network Connection Properties> window appears.

5 Select [Internet Protocol (TCP/IP※)] on [General] tab, and click [Properties].

※“Glossary” (See page 66)

<Internet Protocol (TCP/IP) Properties> window appears.

6 Select [Use the following IP address] on [General] tab, enter the IP address and Subnetmask, and click [OK].

Make the IP addresses of the upper three of the four break points the same value as that of the projector, and change the value of the last break point alone.

Make the Subnetmask as the same value as that of the projector.

7 Click [Addition] of [Preferred networks] on [Wireless Networks] tab in <Wireless Network Connection Properties> window.

<Wireless network properties> window appears.

When the [Wireless Networks] tab does not appear, refer to page 71.

8 Make the SSID, network authentication, data encryption and communication mode settings the same as those of step 3, and click [Connections].

9 Click [OK] in <Wireless Network Connection Properties> window.

The connection with the projector is established.

10 Click [Start]→[Log Off] and log off from the computer.

③ Computer operation

11 Log on with the user who operates Wireless Manager ME 5.0.

12 Start Wireless Manager ME 5.0.

13 Select the desired projector in the <Projector Search> window and click [OK].

The launcher appears and the connection with the projector is established.

(“Description of the launcher” → See page 33)

Note

If the projector is not displayed, click [

Connect (cont.)

When using Windows Vista

When the user has the computer administrator authority

You can perform Easy Wireless Set Up if you have administrator authority on the computer. See page 14.

When logging on without administrator authority

Before starting up Wireless Manager ME 5.0, the "Setting the computer IP address " (See page 27) must first be performed.

After completing this operation, start up Wireless Manager ME 5.0.

Confirm to your system administrator before changing any settings.

Following settings are examples of when using a default setting projector.

① Projector settings

- 1 Turn on the projector and press the [NETWORK] button on the remote control.**
- 2 Select [USER 1] - [USER 3] from [NETWORK] at the wireless menu and press the [ENTER] button.**
- 3 Set the details of network and select [OK].**

As for network setting items, see pages 53 - 55.

Confirm to your system administrator before changing any settings.

<Example>

DHCP*	OFF
IP ADDRESS*	192.168.11.100
SUBNETMASK*	255.255.255.0
SSID*	Panasonic Projector
MODE	AD HOC*
AUTHENTICATION	OPEN* (Some computers may require connection by [SHARED*] authentication.)
ENCRYPTION	NONE····· When not performing encryption WEP····· When performing encryption
ENCRYPTION KEY SETTING	When [ENCRYPTION] setting is [WEP*]: DEFAULT KEY : Set 1 – 4 numerals for the default key. KEY 1 – 4 : Set these to match the WEP key registered in [DEFAULT KEY].

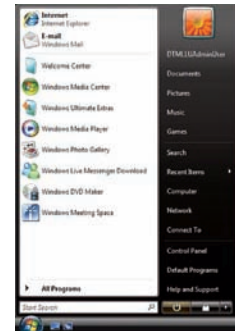
※“Glossary” (See pages 66 - 67)

Connect (cont.)

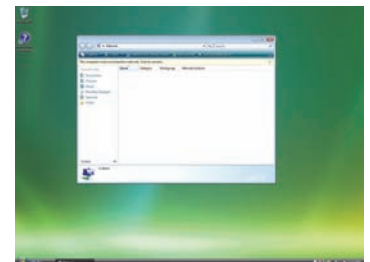
② Setting the computer IP address

4 Turn on the computer and log on with the administrator authority.

5 Select [Start] → [Network].



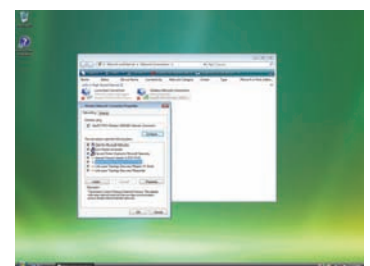
6 Select [Network and Sharing Center].



7 Select [Manage network connections].



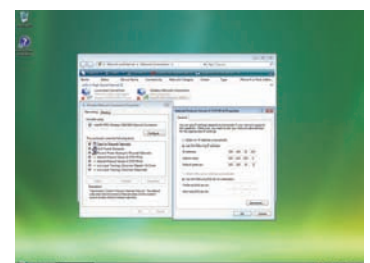
8 Right click the mouse and open the [Wireless Network Connection Properties].



9 Enter [TCP/IPv4] as the setting and press [OK].

If the projector settings are the default settings (page 55), then the computer can be used with the following network settings.

IP ADDRESS	192.168.11.101
SUBNETMASK	255.255.255.0
GATEWAY	192.168.11.1



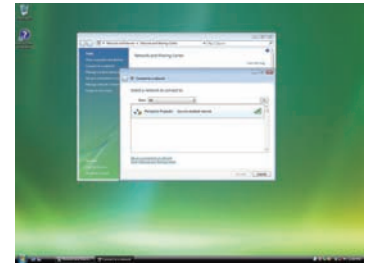
Connect (cont.)

③ Computer network settings

10 In step 7 of “② Setting the computer IP address”, select [Connect to a network].

11 Select [Panasonic Projector] and press the [Connect] button.

- When the connection completion message appears, the network settings are complete.
- When a connection utility is used, use the utility and connect to “Panasonic Projector”.



④ Computer operation

12 Log on with the user who operates Wireless Manager ME 5.0.

13 Start Wireless Manager ME 5.0.

14 Select the desired projector in the <Projector Search> window and click [Connections].

The launcher appears and the connection with the projector is established.
("Description of the launcher" → See page 33)

Note

If the projector is not displayed, click [🔍]. (See page 30)

Selecting the connection method

Note

The following models are compatible with the wired LAN communication that can be used with this Software.

PT-F100NT, PT-FW100NT, PT-F200NT

- When enabling a network adapter, first exit Wireless Manager and then enable the network adapter.

When the <Network Adapter Selection> window appears, select [Wireless LAN] and click [OK].

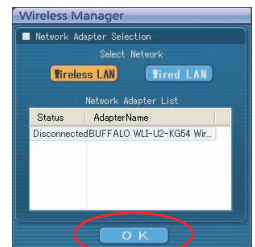
① **When there is a usable wireless LAN (Disconnected)**

Connects to the wireless LAN. (See page 14)

② **When the wired LAN is connected and there is usable wireless LAN (Disconnected)**

The <Network Adapter Selection> window appears.

Select [Wireless LAN], select the connection destination and click [OK].

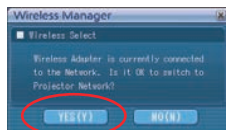


③ **When there are two or more usable wireless LANs (all Connected)**

Select [Wireless LAN], select the connection destination and click [OK].

The <Confirmation dialog> box appears. Click [Yes].

If [No] is clicked, the connection will stay in its original condition and the <Projector Search> window appears. (See page 14)



④ **When there is one usable wireless LAN (Connected)**

Connects to the wireless LAN.

The <Confirmation dialog> box appears. Click [Yes].

If [No] is clicked, the connection stays in its original condition and the <Projector Search> window appears. (See page 14)

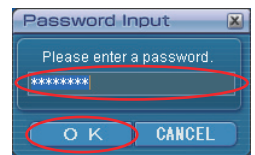
Other operations for connection

Operations when password entry is required for connection

A  mark is displayed for projectors that have passwords set.

When connecting, the window shown to the right appears. Enter the password and click [OK].

(See page 56)



Notes

- Click [CANCEL] at the password entry window to return to <Projector Search> window. (See page 33)
- When an incorrect password is entered, an error message appears.
Click [OK] to return to the password entry window and enter the correct password again.

Other search

Apart from “Easy Wireless Set Up” (See page 14), there are 3 other ways to search for and connect to a projector, namely “IP address Search”, “Domain Name Search”, and “ID Search”.

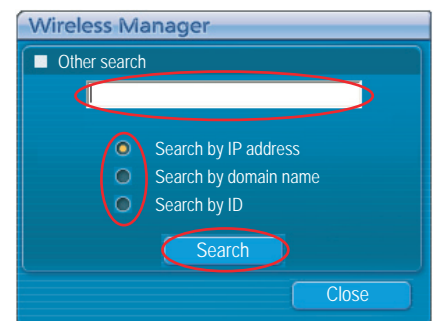
These methods can be used if you cannot search using “Easy Wireless Set Up”.

- IP address Search Search for and connect to a projector from the IP address*.
The projector that you want to connect to must have a network number of [USER1]-[USER3] and must have the IP address set. (See page 53)
- Domain Name Search Search for and connect to a projector from the domain name*.
The projector that you want to connect to must have a network number of [USER1]-[USER3] and must have the IP address set. (See page 53)
※ “Glossary” (See page 66)
- ID Search Even if there are two or more projectors with the same name, an ID ([Proj] + 4-digit number) is assigned to each projector to enable the projectors to be identified.
A search for the projector of the specified ID is carried out from among the projectors that are presently switched on, from all network numbers other than [USER1]-[USER3].
It is necessary to know ID in advance. When input selection is switched to [NETWORK] on a projector, the ID appears on the upper right of the projection screen for approximately 5 seconds.
If you write down the ID displayed in the [ID] column of the <Projector search> window in advance, you can search a projector by the ID from next time.

1 Click  at the <Projector search> window.
<Other search> window appears.

2 Enter the information of the projector you want to search for, and select the search criteria.

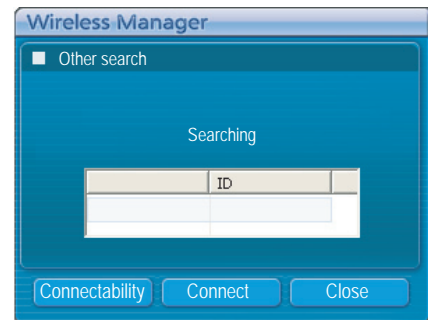
- When using “IP address Search”
 - ① Enter the IP address (including its periods).
Example: 192.168.10.100
 - ② Select [IP Address Search]
- When using “Domain Name Search”
 - ① Enter the domain name.
 - ② Select [Domain Name Search].
- When using “ID Search”
 - ① Enter the ID.
 - ② Select [ID Search].



Other operations for connection (cont.)

3 Click [Search].

When <Other search> window – [Searching] is displayed, the search starts.

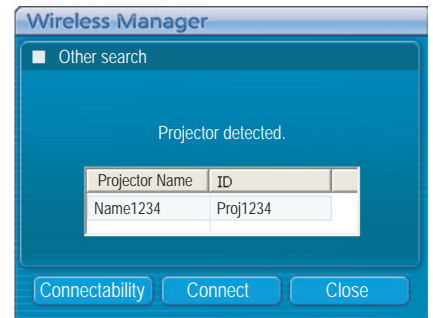


4 Check the search results.

When the projector of the applicable ID is found, the [Projector Name] and [ID] appear.

Note

If a projector of the applicable ID is not found, [Could not find a connection point] appear.



5 Click [Connections].

When the connection with the projector is established, the launcher is displayed.

("Description of the launcher" → See page 33)

Note

The launcher is not projected by the projector.

However, if you are using Windows Vista, the installed launcher is projected.

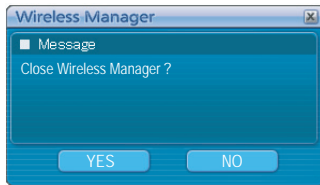


Other operations for connection (cont.)

Canceling the connection

1 Click [X] on the launcher.

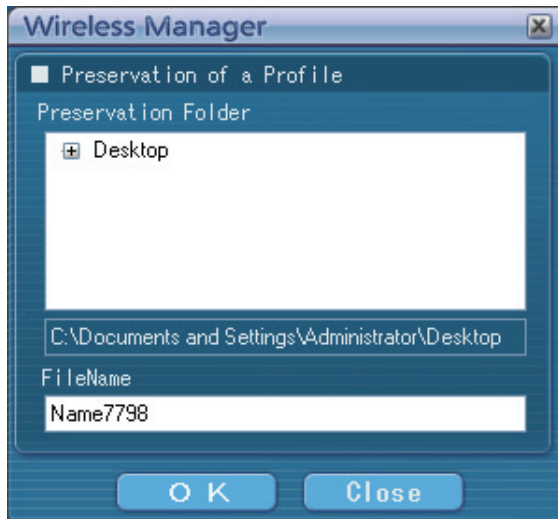
The following window appears.



■ When connecting the projector for the first time

The <Preservation of a Profile> window appears.
Create a profile with information about connected projectors.
You can use the created profile to connect automatically.
This function is called "One-click Connection".

Set the save destination and file name, and click [OK].
If you do not need to create a profile, click [Close].



When connecting automatically using "One-click Connection"

Perform step ① or ②.

- ① Double-click the profile.
(This function cannot be used when using without installation.)
- ② Drag and drop the profile to the [Icon] on the desktop.
The computer connect to the projector that was connected when the profile was created.

2 Click [Yes].

The computer returns to the original network settings when the connection is ended.
However, note that some time may be needed to return to the original network settings.
Click [No] to return to the launcher.

Note

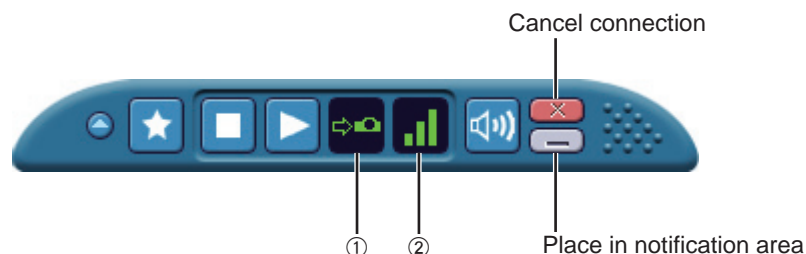
When the launcher is minimized, right click [Icon] on the notification area to display pop up menu and click [End].

Various projection methods

Description of the launcher

The launcher always appears on the computer screen, and can be used to perform various operations.

- If the launcher has been minimized to the task tray, right click the [🖥️] icon to display the launcher menu and operate the launcher.
- To return the launcher from the task tray, double-click the [🖥️] icon, or select “Display menu bar” from the menu.



Status indication

- ① **Status:** Indicate the connecting status.

When the cursor is moved onto [🖥️] of the launcher, the names, IDs, and statuses of the connected projectors are displayed in a pop up window.

When connected to one projector

- 🖥️ (Green, lit): Transmission possible
- 🖥️ (Blue, lit): Own computer currently transmitting (when in live mode)
- 🖥️ (Yellow, lit): Other user currently transmitting
- 🖥️ (Red, lit): Communication impossible
- 🖥️ (Black, lit): When the projector has not been selected

When connected to multiple projectors

- 🖥️ (Green, lit): All transmission possible
- 🖥️ (Blue, lit): Currently Transmitting
- 🖥️ (Yellow, blinking): Communication impossible for more than one unit
- 🖥️ (Red, lit): All communication impossible
- 🖥️ (Black, lit): When the projector has not been selected

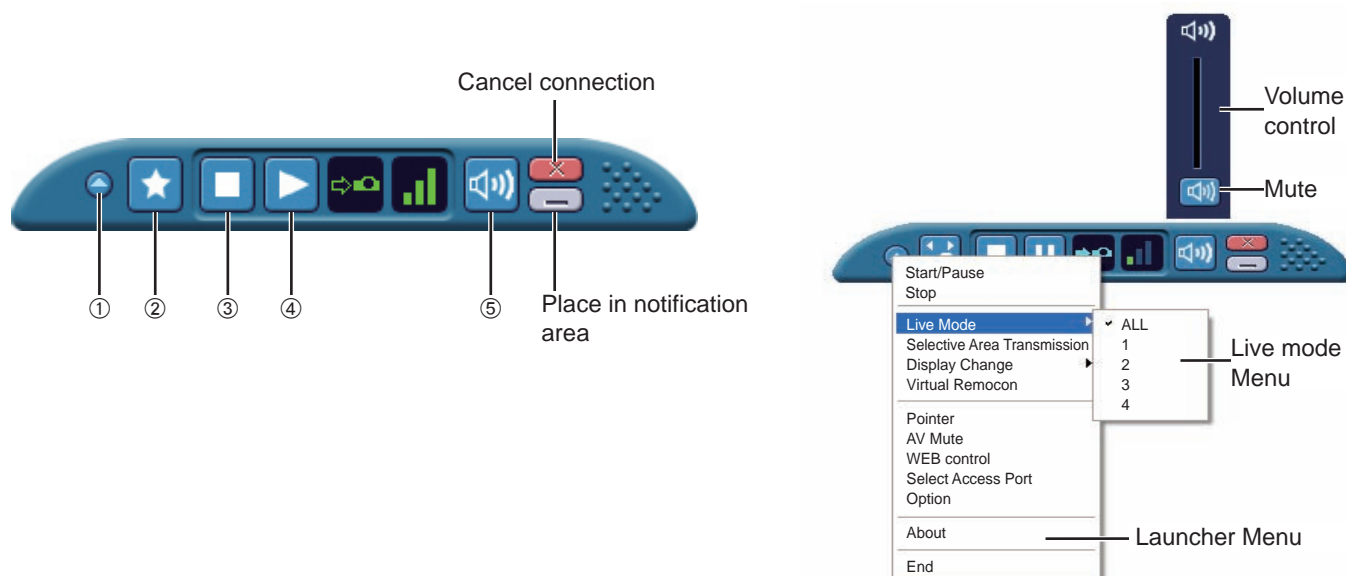
Sendable		
Projector Name	: [ID]	: Status
Name2207	: [Proj2207]	: OK

- ② **Reception strength level:** Displays the strength level condition of the reception. The more bars displayed, the stronger the reception and the better the communication environment.

Note

Depending on the position of the moved screen, the display configuration (direction) of the launcher may change.

Various projection methods (cont.)



■ Operating Button

- ① **Launcher menu button:** The launcher menu will appear. You can operate it by clicking the various items.
- [Start/Pause]: Starts/pauses projecting.
 - [Stop]: Stops projecting.
 - [Live Mode]: The live mode menu will appear. Set the shape of the projected screen when in live mode. (See pages 35-36)
 - [Selective Area Transmission]: By using the selective area window, you can specify the necessary information alone from the computer screen, and display it on the projection screen. (See page 45)
 - [Display Change]: You can set the computer screen and projector screen to the multi-monitor mode, and use the computer screen as the primary monitor and projector screen as a secondary monitor. (See page 46)
 - [Virtual Remocon]: The projector remote control is displayed on the computer screen, where it can be operated.



- [Pointer]: Switches the pointer shape on the projected screen. (See page 47)
- [AV Mute]: Temporarily mutes the projector screen and volume. (See page 47)
- [WEB control]: Control a projector through the WebBrowser of a computer. (See page 59)
- [Select Access Port]: Displays the <Projector Search> window. Return to the screen before the launcher display. (See page 14)
- [Option]: Displays the <Option> window. (See page 49)
- [About]: Display the version information for the application.
- [Display Menu Bar]: Displays the launcher menu. (When minimized into the task tray.)
- ② Favorite function button: You can set the function you use frequently to this button. (See page 51)
- ③ Stop projection button: Stops projecting.
- ④ Projection start button: Starts projection. During transmission, the display changes to [⏸] (paused).
- ⑤ Volume Adjust Button: The volume control slider and mute button are displayed. Click again to close.

Note

The 2 screen function cannot be used with the virtual remote control.

Various projection methods (cont.)

Live mode

Connect a computer to a projector, and display the computer screen over the entire projection screen.

- 1 Press the [MULTI-LIVE] button on the remote control to turn the projection screen into a full screen display (the status when no index window (small screens) is displayed). (See page 36)**

If you press the [MULTI-LIVE] button once or twice when index windows are displayed on the projection screen, the screen will switch over to a full screen display.

Note

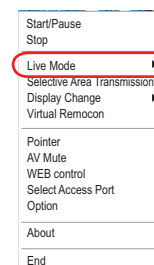
The live mode cannot be displayed if the index is being displayed.

- 2 Check the status indication on the launcher to make sure that transmission is possible (📡). (See page 33)**

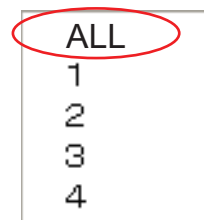
- 3 Click [📡].**

The launcher menu will appear.

- 4 Click [Live Mode] in the launcher menu.**



- 5 Click [ALL].**



- 6 Click [▶] on the launcher.**

The current computer screen is transmitted to the selected projector. In the live mode the projector is occupied by a single computer, so operations from other computers are not possible.

Notes

- Picture quality or other options can be set on the <Option> window by clicking [Option] in the launcher menu. (See page 49)
- For presentations in live mode, the [PAGE ▲ ▼] buttons on the remote control will function in the same way as the computer's Page Up and Page Down keys. (When using "Presenter View" of "PowerPoint", the [PAGE ▲ ▼] buttons of the remote control correspond to Back space key and Space key.) This means that if you run a computer application that supports the Page Up and Page Down keys, the presentation screen can be changed using the remote control.
- Some portions of images are not projected under some applications (MS Office Assistant, IME Bar, animation and locus of the mouse cursor, and others).
- If the connection error occurs during projection, the message [Stop "Live mode"] will appear. Check the communication environment, then restart projection by clicking launcher buttons.
- Set the [LIVE MODE CUT IN] of the unit to [ON] in advance to enable a different computer to interrupt and project images in live mode. (See page 57)

■ Quitting live mode

Click [■] on the launcher.

Various projection methods (cont.)

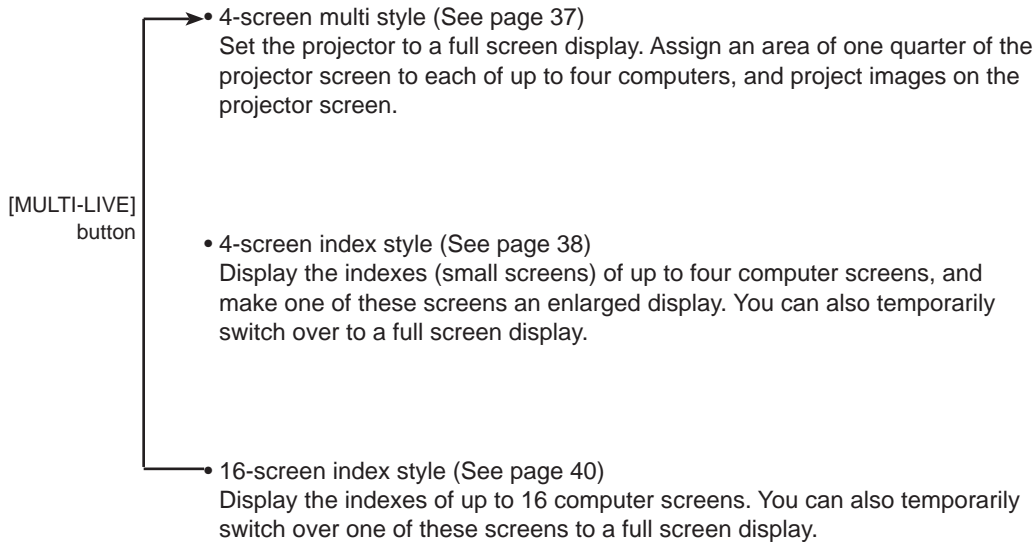
Multi live mode

Switching from one style to another

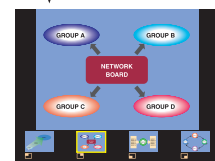
Multi live mode has “4-screen multi style”, “4-screen index style” and “16-screen index style”.

■ How to operate

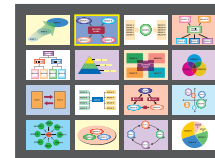
Press the [MULTI-LIVE] button of the remote control to change the style.



[MULTI-LIVE] button



[MULTI-LIVE] button



Notes

- When the projector starts up, it resumes in the current style the last time the projector was turned off.
- When transferring to the live mode, first select the 4-screen multi style, and then click [▶] on the computer.
- If you switch over to a 4-screen multi style when five or more computers are connected in a 16-screen index style, the connections to the fifth and higher numbered computers will be nullified.
- You cannot use the “MULTI-LIVE” button on the remote control when in full screen display.

Various projection methods (cont.)

4-screen multi style

Connect up to four computers to one projector, and then divide the projector screen into four parts, and simultaneously display the screens for the four computers on the projector screen.

- 1 Press the [MULTI-LIVE] button on the remote control to turn the projection screen into a full screen display (the status when no index window (small screens) is displayed). (See page 36)

If you press the [MULTI-LIVE] button once or twice when index windows are displayed on the projection screen, the screen will switch over to a full screen display.

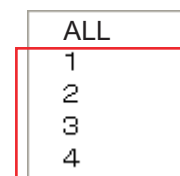
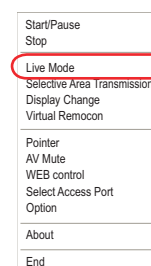
- 2 Check the status indication on the launcher to make sure that transmission is possible (🔄). (See page 33)

- 3 Click [🔵].

The launcher menu will appear.

- 4 Click [Live Mode] in the launcher menu.

- 5 Select and click the projection position.



- 6 Click [▶] on the launcher.

The computer image is transmitted to the selected quarter of the projection screen.



■ Switching to a different position

Select and click a different projection position in step 4 above.

■ Enlarged display

If [Live Mode] – [All] is clicked in the launcher menu, projector screens temporarily change to full screen display. To return to the original display, click [Live mode] on the launcher and select original projection positions with each computer.

■ Quitting 4-screen multi style

Click [🔵] on the launcher.

Notes

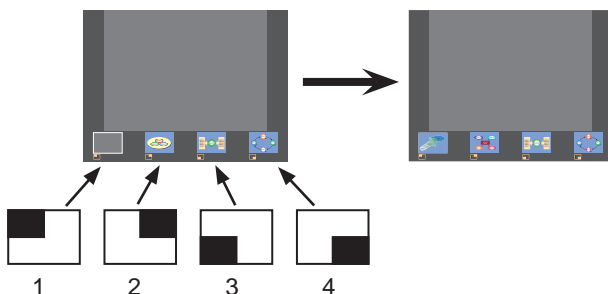
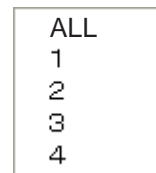
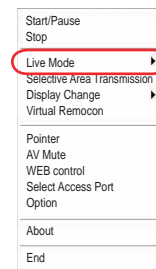
- In the 4-screen multi style, the computer screens from all the computers connected to the projector can be transmitted to the projector. (If an image from another computer has been sent to the image position where an image is already displayed, the existing image is replaced by the new image.)
- Picture quality or other options can be set on the <Option> window by clicking [Option] in the launcher menu. (See page 49)
- If the connection error occurs during projection, the message [Stop "Live mode"] will appear. Check the communication environment, then restart projection by clicking launcher buttons.

Various projection methods (cont.)

4-screen index style

When the projector is set to “4-screen index style”, connect up to four computers to one projector, and then simultaneously display the screens for the four computers on the index windows and also on a large screen.

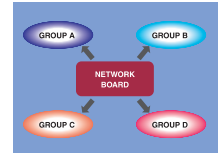
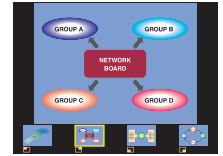
- 1 Press the [MULTI-LIVE] button of the remote control to switch the projection screen to “4-screen index style”. (See page 36)**
- 2 Check the status indication on the launcher to make sure that transmission is possible (🔌). (See page 33)**
- 3 Click [🖥️].**
The launcher menu will appear.
- 4 Click [Live Mode] in the launcher menu.**
- 5 Select and click the projection position.**
- 6 Click [▶] on the launcher.**
The computer image is transmitted to the area of corresponding window.



Various projection methods (cont.)

■ Enlarged display

- Use the [◀ ▶] buttons on the remote control to move the focus (yellow box) to the image to be enlarged, and press the [ENTER] button. The image is enlarged and displayed at the top of the projection screen.
- The image display will fill the entire screen if the [ENTER] button is pressed again.
- To return to the 4-screen index style, press the [ENTER] button again.



Notes

- While an enlarged image is displayed, the [PAGE ▲ ▼] buttons on the remote control will function in the same way as the computer's Page Up and Page Down keys. (When using "Presenter View" of "PowerPoint", the [PAGE ▲ ▼] buttons of the remote control correspond to Back space key and Space key.) This means that if you run a computer application that supports the Page Up and Page Down keys, the presentation screen can be changed using the remote control.
- Picture quality or other options can be set on the <Option> window by clicking [Option] in the launcher menu. (See page 49)
- If the connection error occurs during projection, the message [Stop "Live mode"] will appear. Check the communication environment, then restart projection by clicking launcher buttons.

■ Quitting the 4-screen index style projection

Click [■] on the launcher.

Note

In the 4-screen index style, the status display lamp remains (🟡🟢🔴).
Other computers can send images only to the windows which are not being used.

Various projection methods (cont.)

16-screen index style

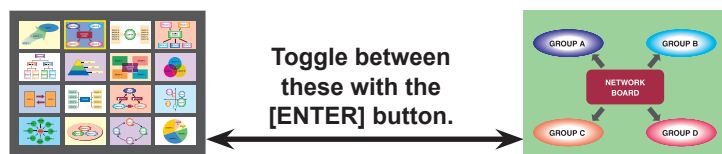
When the projector is set to “16-screen index style”, connect up to 16 computers to one projector, and simultaneously display the screens for the 16 computers on index windows and also on a large screen.

- 1 Press the [MULTI-LIVE] button of the remote control to switch the projection screen to “16-screen index style”. (See page 36)
- 2 Check the status indication on the launcher to make sure that transmission is possible (🔌). (See page 33)
- 3 Click [▶] on the launcher.

The computer images are automatically sent to the empty windows on the 16-screen display.
Display position is not selectable.

■ Enlarged display

- Use the [◀▶▲▼] buttons on the remote control to move the focus (yellow box) to the image to be enlarged and press [ENTER] to expand that image to fill the display.
- Press [ENTER] again to return to the 16-screen index style.



Notes

- While an enlarged image is displayed, the [PAGE ▲▼] buttons on the remote control will function in the same way as the computer's Page Up and Page Down keys. (When using “Presenter View” of “PowerPoint”, the [PAGE ▲▼] buttons of the remote control correspond to Back space key and Space key.) This means that if you run a computer application that supports the Page Up and Page Down keys, the presentation screen can be changed using the remote control.
- Picture quality or other options can be set on the <Option> window by clicking [Option] in the launcher menu. (See page 49)
- If the connection error occurs during projection, the message [Stop “Live mode”] will appear. Check the communication environment, then restart projection by clicking launcher buttons.

■ Quitting the 16-screen index style projection

Click [■] on the launcher.

Various projection methods (cont.)

Multiple Source Live Mode

You can simultaneously project one computer's screen on up to eight projectors.

Notes

Can be projected by projectors that have a network number of [1]-[4] or [USER1]-[USER3].

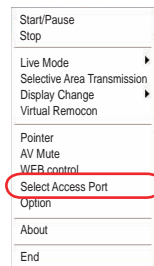
- 1 Press the [MULTI-LIVE] button on the remote control to turn the projection screen into a full screen display (the status when no index window is displayed). (See page 36)

If you press the [MULTI-LIVE] button once or twice when index windows are displayed on the projection screen, the screen will switch over to a full screen display.

- 2 Click .

The launcher menu will appear.

- 3 Click [Select Connection Point] in the launcher menu.



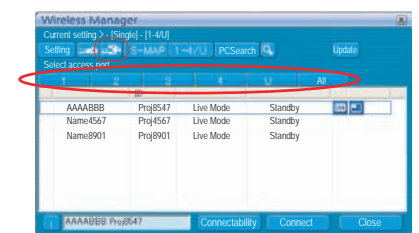
- 4 Click [Setting ►], and click [1-4/U] in the setting menu.
<Projector Search> window – [1-4/U] is displayed.



- 5 Click .

- 6 Select the network number of the desired projectors.
(See page 53)

Projectors powered on in the chosen network group are listed.

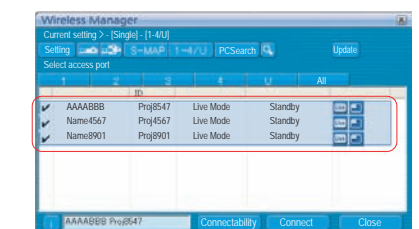


- 7 Select the desired projectors, and click [Connections].

The selected projector is displayed with a blue-colored .

If click again, selected items are canceled.

If click [OK], the connection with the projectors is established.



Various projection methods (cont.)

8 Check the status indication on the launcher to make sure that transmission is possible (). (See page 33)


9 Click [>] on the launcher.

The same image is projected from all projectors selected in step 5.

Notes

- From the selected projectors, multiple projectors that have the same network number are projected in live mode.
- When one of the selected projectors is communicating with another computer, or its projection screen is not set to full screen display, the images are projected onto the other selected projectors.
- The greater the number of projectors, the slower the transmission.
- Picture quality or other options can be set on the <Option> window by clicking [Option] in the launcher menu. (See page 49)
- Sound cannot be output in the multiple source live mode.
- If the connection error occurs during projection, the message [Stop “Live mode”] will appear. Check the communication environment, then restart projection by clicking launcher buttons.
- Set the [LIVE MODE CUT IN] of the unit to [ON] in advance to enable a different computer to interrupt and project images in live mode. (See page 57)

■ Quitting multiple source live mode

Click [>] on the launcher again.

Various projection methods (cont.)

Multiple Source Multi Live Mode

Connect up to four computers to each of up to eight projectors, and project in each projector by the 4-screen multi style.

Notes

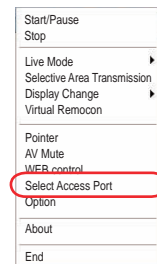
Can be projected by projectors that have a network number of [1]-[4] or [USER1]-[USER3].

- 1 Press the [MULTI-LIVE] button on the remote control to turn the projection screen into a full screen display (the status when no index window is displayed). (See page 36)**

If you press the [MULTI-LIVE] button once or twice when index windows are displayed on the projection screen, the screen will switch over to a full screen display.

- 2 Click [].**

The launcher menu will appear.



- 3 Click [Select Connection Point] in the launcher menu.**

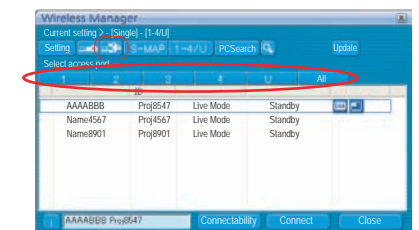
- 4 Click [Setting ►], and click [1-4/U] in the setting menu.**
<Projector Search> window – [1-4/U] is displayed.



- 5 Click [].**

- 6 Select the network number of the desired projectors.**
(See page 53)

Projectors powered on in the chosen network group are listed.

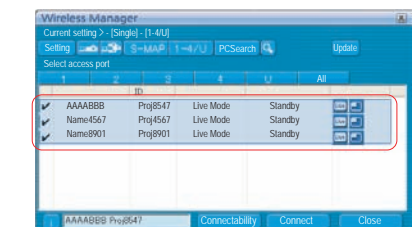


- 7 Select the desired projectors, and click [Connections].**

The selected projector is displayed with a blue-colored [].

If click again, selected items are canceled.

If click [OK], the connection with the projectors is established.

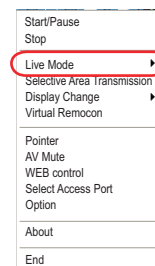


Various projection methods (cont.)

8 Check the status indication on the launcher to make sure that transmission is possible (). (See page 33)

9 Click .

The launcher menu will appear.

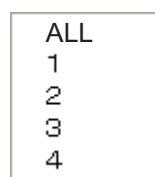


10 Click [Live Mode] in the launcher menu.

11 Select and click the projection position.

12 Click  on the launcher.

The computer image is transmitted to the selected quarter of the projection screen.



■ Switching to a different position

Select and click a different projection position in step 7 above.


■ Enlarged display

If [Live Mode] – [All] are clicked in the launcher menu, projector screens temporarily change to full screen display. To return to the original display, click [Live Mode] on the launcher and select original projection positions with each computer.

■ Secondary viewer function

If another computer enlarged the display, your screen is out of the projection screen and displayed in the secondary viewer on your computer. (See page 46)

■ Quitting multiple source multi live mode

Click  on the launcher.

Notes

- From the selected projectors, multiple projectors that have the same network number are projected in multi-live mode.
- If LB10NT/20NT/30NT or a projector whose projection screen is not set to full screen display is included among the selected projectors, the launcher live mode [1]-[4] will be grayed out, preventing the projector from being selected.
- The greater the number of projectors, the slower the transmission.
- In multiple source multi live mode even when the remote projector [MULTI-LIVE] button is pressed no operation will result.
- Picture quality or other options can be set on the <Option> window by clicking [Option] in the launcher menu. (See page 49)
- If the connection error occurs during projection, the message [Stop “Live mode”] will appear. Check the communication environment, then restart projection by clicking launcher buttons.

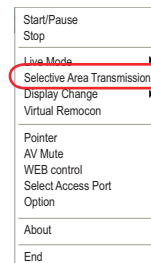
Useful Functions

Selective area transmission

By using the selective area window, you can specify the necessary information alone from the computer screen, and display it on the projection screen.

1 Click [📺].

The launcher menu will appear.



2 Click [Selective Area Transmission] in the launcher menu.

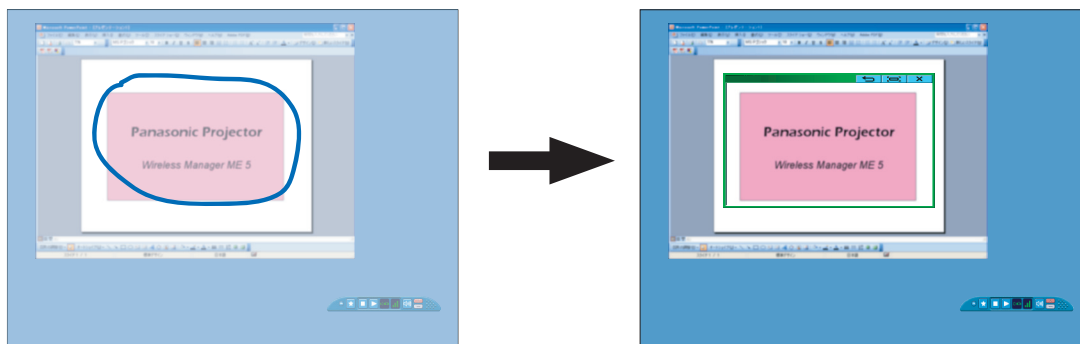
The range selection screen is displayed.

3 With the left mouse button held down, surround the area you want to send to the projector.

Selective area window (green) appears on computer screen.

You can perform operations in the selective area window with the same operation for moving or changing the window on the computer screen.

- If clicking [📏], the selective area window automatically fit the inside window's size.
- If clicking [↶], the selective area window changes to its default size.
- If clicking [X], the selective area transmission function ends.



Note

If you have drawn a straight line, a selective area window is displayed in the diagonal direction from your line.

4 Check the status indication on the launcher to make sure that transmission is possible (📶). (See page 33)

5 Click [▶] on the launcher.

The picture in the selective area window is projected.

Note

- The picture inside the selective area window is displayed as big as possible with keeping the original aspect ratio to be fit for the resolution of projection screen.
- Windows Vista
Selective area transmission does not work, without Administrator authority.

■ Quitting selective area transmission

Click [Selective Area Transmission] on the launcher again, or click [X] on the upper right of the selective area window.

Useful Functions (cont.)

Secondary display transmission

You can set the computer screen and the projector screen to the multi-monitor mode, and use the computer screen as the primary monitor and the projector screen as the secondary monitor.

1 Click [].

The launcher menu will appear.

2 Click [Display Change] in the launcher menu.

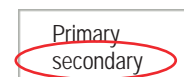
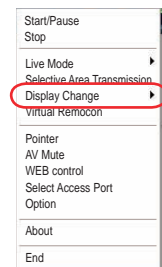
The window shown to the right appears.

3 Click [Secondary].

4 Check the status indication on the launcher to make sure that transmission is possible (). (See page 33)

5 Click [] on the launcher.

The secondary screen on the computer is projected.



Notes

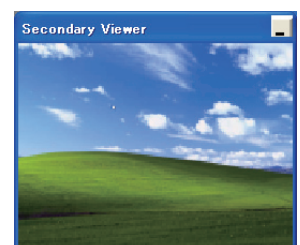
- Like the normal multi-monitor function, you can change the relative positions of the primary monitor (computer screen) and secondary monitor (projector screen) in the [Settings] tab in the [Screen Properties] window ([Start] → [Control Panel] → [Appearances and Themes] → [Screen]).
- It is impossible to send images to the secondary monitor by the selective area transmission (See page 45).
- If the computer has been set to the multi-monitor mode, the monitor for the display switch-over function will be displayed as the third monitor in [Display Properties] of Windows.
- When secondary display transmission is being used in Windows Vista, the movie section may not be playable depending on the movie playback application.

■ Quitting secondary display transmission

Click [Primary] in step 2.

Secondary viewer

If you are using secondary display transmission function and projecting a secondary monitor screen in multiple source multi live mode, once [Live Mode] – [All] is pressed on one of the computers, the full screen display from the computer will override all the rest, and it will no longer be possible to verify the secondary screens of the other computers on the projector screen(s). In this case, the secondary screen that you were projecting will appear on your desktop as a secondary viewer in reduced form. Also, while using the secondary display transmission in the 4-screen index style and the 16-screen index style, the secondary viewer appears.



Notes

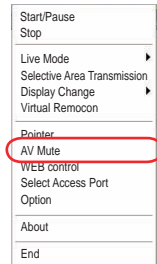
- You can perform operations on the secondary monitor while observing the secondary viewer on the computer screen, however an image will not appear on the projection screen(s) until the projection screen(s) goes back to the original projection style.
- When the projector screen(s) return to its original status, the contents of the secondary viewer are displayed on the projection screen(s), and the secondary viewer is closed as well.

Useful Functions (cont.)

AV mute function

Blanks the screen for a moment.

- 1 Click [🔊].**
The launcher menu will appear.
- 2 Click [AV mute] in the launcher menu.**
The image is turned off.
When sound is output, the sound also goes out.
- 3 Click [AV mute] in the launcher menu again.**
The image comes back.
When sound is output, the sound can also be heard.



Note

The AV mute Function is available only in live mode or multiple source live mode.

Pointer function

You can change the shape of the pointer appearing on the projection screen in live mode or multiple source live mode to one that can be used for presentation purposes.

Click [Pointer] in the launcher menu.

■ Quitting pointer function

Click [Pointer] in the launcher menu again.



Useful Functions (cont.)

Functions used with each projection method

Wireless Manager ME 5.0 can be used when connected to the following projectors.

When using PT-LB80NT/PT-LW80NT/ PT-F200NT/PT-F100NT/PT-FW100NT/ PT-LB51NT/PT-LB50NT/ PT-LB55NT/PT-LB60NT		Selective area transmission	Secondary display transmission	AV mute	Pointer	Note
When connected to one projector	Live mode	✓	✓	✓	✓	
	Multi live mode	✓	✓	×	×	
When connected to multiple projectors	Multiple Source Live Mode	✓	✓	✓	✓	
	Multiple Source Multi Live Mode	✓	✓	×	×	

When using PT-LB20NT/LB30NT		Selective area transmission	Secondary display transmission	AV mute	Pointer	Note
When connected to one projector	Live mode	×	✓	✓	✓	
	Multi live mode	×	✓	×	×	
When connected to multiple projectors	Multiple Source Live Mode	×	✓	✓	✓	
	Multiple Source Multi Live Mode	—	—	—	—	Unavailable

When using PT-LB10NT		Selective area transmission	Secondary display transmission	AV mute	Pointer	Note
When connected to one projector	Live mode	×	✓	✓	✓	
	Multi live mode	×	✓	×	×	
When connected to multiple projectors	Multiple Source Live Mode	×	✓	✓	✓	
	Multiple Source Multi Live Mode	—	—	—	—	Unavailable

✓= Yes, ×= No

- Sound can be output only in live mode. (See page 49)
- Sound is not output when multiple projectors are connected.

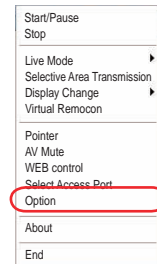
Setting options

You can make various settings related to Wireless Manager ME 5.0.

Setting option window

1 Click [].

The launcher menu will appear.

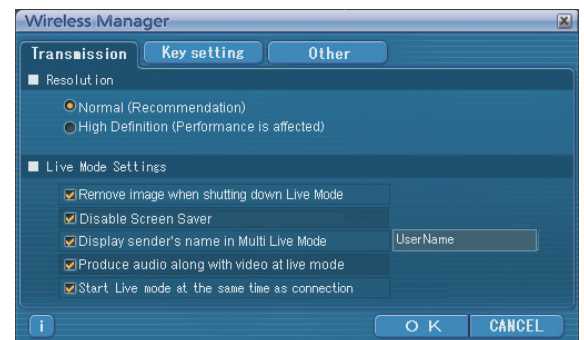


2 Click [Option] in the launcher menu.

The <Option> window shown to the right appears.

3 Click the desired tab to be set.

4 Click [OK].



Transmission

■ Resolution

Select the quality of the image transmitted from the computer to the projector.

■ Live Mode Settings

- [Remove image when shutting down Live Mode]
Check this box to clear the projection screen from the projector when live mode ends.
- [Disable Screen Saver]
This disables the computer screen saver function while Wireless Manager ME 5.0 is operating. Check this box to disable screen saver operation during live mode.
- [Display sender's name in Multi Live Mode]
The characters (max. 8) which have been entered are displayed at the upper right of the transmitted screen. In the 4-screen and 16-screen index style modes, they are also displayed at the bottom of each image. (Alphanumerics are not displayed when the check mark has been removed.)
- [Produce audio along with video at live mode]
You can set this when you want to output audio data from a projector in live mode. Also, volume setting operated from the launcher is different from the Windows' volume setting, and it is effective only for wireless connection. When finishing Wireless Manager ME 5.0, the Windows' volume setting becomes active. Sound can be output only in live mode.
- [Start Live mode at the same time as connection]
Projection starts when the connection is made without having to click the live button.

Note

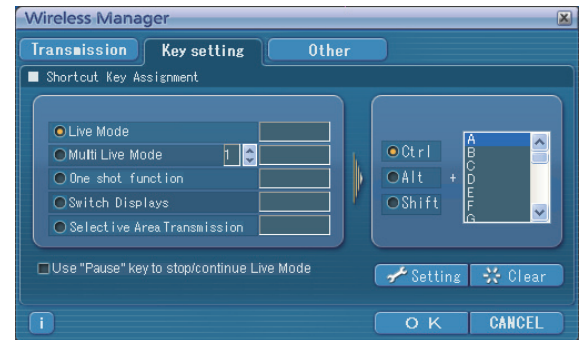
In the initial settings, [Disable Screen Saver] is enabled. Please remember that the password protected screen saver is disabled if you need to leave your computer.

Setting options (cont.)

Key setting

You can set shortcut key combinations that let you control the Wireless Manager ME 5.0 functions by computer keyboard operations.

- 1 Select the mode or the function to be set for the shortcut key, and click it.**
- 2 Select one from [Ctrl], [Alt], and [Shift].**
- 3 Select one alphabet to be used with the key chosen in step 2.**
- 4 Click [Setting].**
The shortcut key set in step 2 - 3 appears in the blank space.
If click [Clear], the shortcut settings are canceled.



[Use "Pause" key to stop/continue Live Mode]: Stops/continues live mode and multi live mode.

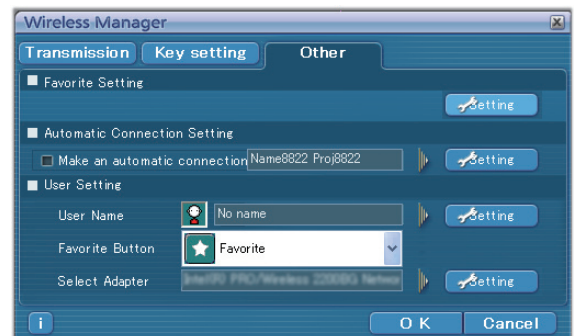
Note

In live mode and multi live mode, the shortcut key switches the mode without stopping live mode.

Setting options (cont.)

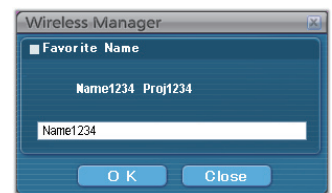
Other

Perform other settings.



■ Setting Favorites

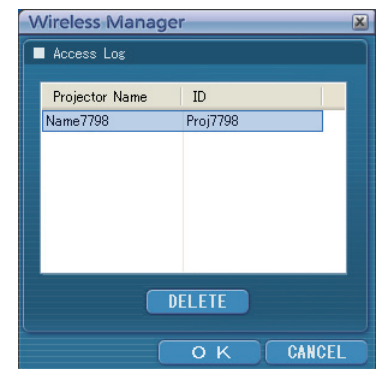
It is possible to assign a different name to connected projectors. When connected, a field is displayed at the bottom of the <Projector Search> window. Click [Settings] to display the <Register favorite names> screen, and enter a name for the projector.



■ Automatic connection setting

You can perform automatic settings for newly connected projectors.

- If the [Make an automatic connection] box is checked and a projector is registered as a destination for automatic connection when Wireless Manager ME 5.0 is started, <Projector Search> window does not appear and connection is performed automatically.
- When [Setting] is clicked, <Access Log> window appears and you can select projector(s) for automatic connections. Up to 5 projectors may be displayed in the order of most recent connection history. When it is desired to remove a projector from the display list, select it and press the [DELETE] → [OK] button.



■ User settings

- User name
When [Setting] is clicked, the <User name setting> window to the right appears. Specify the icon and user name shown on the <Projector search> window.

Note

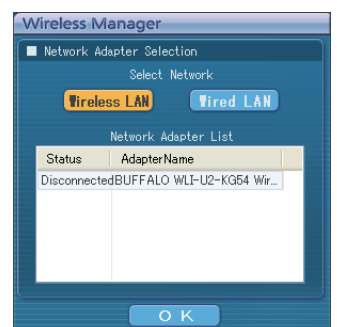
Enter the user name in up to 8 alphanumerics.



- Favorites Button
Assign whichever function you like to a specific launcher button. (See page 34)

	: [Select Access Port]		: [WEB control]
	: [Option]		: [AV Mute]
	: [Selective Area Transmission]		: [Display Change]
	: [Virtual Remocon]		: [None]

- Adaptors
Set the adaptor that is used normally. (Wireless/wired LAN adaptor).



Version information

The version information of Wireless Manager ME 5.0 is displayed when on the <Option> window is clicked.

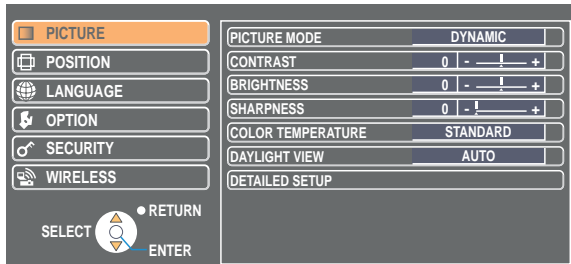
Network/Security setting of the projector

When making a connection between a computer and a projector with settings other than the default settings, perform the procedure below to display the menu required when changing the initial settings. For details on how to perform detailed settings, see the projector user's manual.

Displaying the Wireless Menu

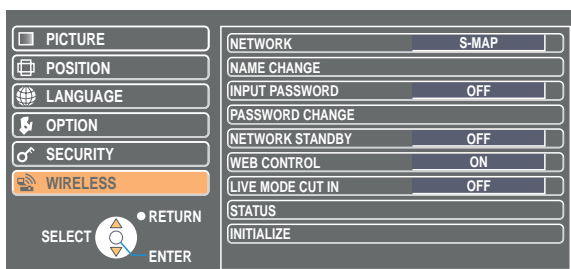
1 Press the [MENU] button on the projector.

The main menu appears.



2 Select [WIRELESS] with the [▲▼] buttons.

The wireless menu appears.



Note

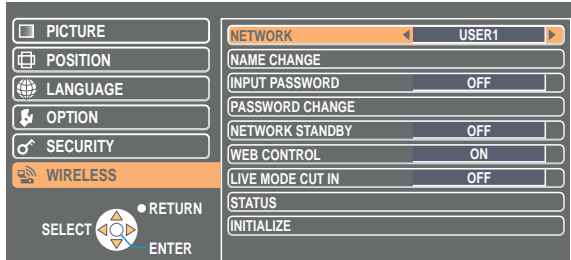
Depending on the signals which are input to the projector, it may not be possible to adjust some of the items and use some of the functions.

In the case of an item that cannot be adjusted or a function that cannot be used, the corresponding on-screen item will not be displayed, and you will not be able to execute it even when you press the [ENTER] button.

Network setting of the projector (cont.)

Changing the network number

- 1 Select [NETWORK] at the wireless menu.
- 2 Select the number to be connected with the [◀ ▶] buttons.



- Network number
Off, [S-MAP], [1]-[4], [USER1]-[USER3]

Note

You can disable the wireless LAN by selecting [Off].

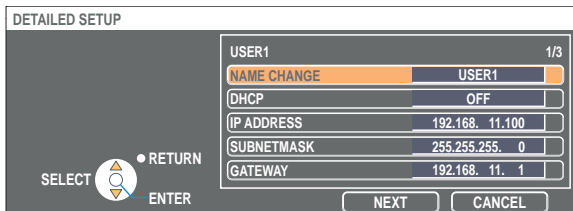
[USER] settings

If you selected one of [USER1] to [USER3] for [NETWORK] in the wireless menu, you can make detailed network settings. Confirm to your system administrator before changing any settings.

IP address settings

■ How to display IP address setting menu

Press [NETWORK]→[USER1] - [USER3]→[ENTER] on wireless menu.



DHCP※:

ON: If a DHCP server exists in the network to which the projector is connected, the IP address will automatically be acquired.

OFF: If a DHCP server does not exist in the network to which the projector is connected, additionally set [IP ADDRESS※], [SUBNETMASK※] and [GATEWAY※].

※ "Glossary" (See page 66)

Note

A wired LAN and wireless LAN cannot be used in the same segment.

Network setting of the projector (cont.)

Wireless settings

Select [NEXT] on the IP address setting window to switch to the wireless setting window.
Make the settings related to the wireless connection between the projector and the network.

DETAILED SETUP

USER1 2/3

SSID Panasonic Projector

MODE AD HOC

AUTHENTICATION OPEN

ENCRYPTION NONE

CHANNEL 1

RETURN NEXT CANCEL

SELECT RETURN ENTER

- SSID* : If the mode is [INFRASTRUCTURE*], enter the SSID registered at the access point. If the mode is [AD HOC], enter the same character string as that of SSID set on the computer to be connected.
- MODE : Select [AD HOC] or [INFRASTRUCTURE].
 - AD HOC* : Connect projector and computer directly without access point.
 - INFRASTRUCTURE* : Connect through access point.
- AUTHENTICATION : Set the user authentication method used by the network to be connected.
 - OPEN : Select when making a connection using [AD HOC], or when the access point authentication method is OpenSystem*.
 - SHARED : Select when making a connection using [AD HOC], or when the access point authentication method is Shared Key*.
 - WPA-PSK* : Select when the access point authentication method is WPA-PSK.
 - WPA2-PSK* : Select when the access point authentication method is WPA2-PSK.
- ENCRYPTION : Select the encryption method to be used for communication between the projector and the network.
 - NONE : Select when transmit without encryption. It is selectable only when [AUTHENTICATION] is [OPEN] or [SHARED].
 - WEP* : Select when ENCRYPTION is WEP.
 - TKIP* : Select when ENCRYPTION is TKIP.
Selectable when [Authentication] is either [WPA-PSK] or [WPA2-PSK].
 - AES* : Select when ENCRYPTION is AES.
Selectable when [Authentication] is either [WPA-PSK] or [WPA2-PSK].

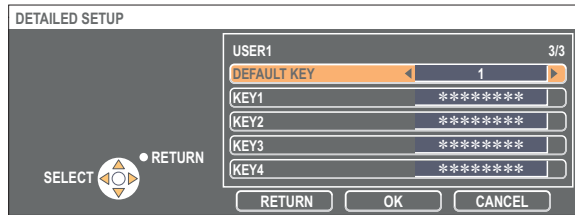
※ "Glossary" (See page 67)

Notes

- If you are unable to connect to the wireless LAN through the access point even after performing the steps in "① Projector settings (See page 23)," contact the manufacturer of the access point.
- IEEE802.1x is not supported.

Network setting of the projector (cont.)

Additionally perform the following setting using the [AUTHENTICATION] setting.



■ When setting [OPEN] or [SHARED] as authentication and setting [WEP[®]] as the encryption method:

DEFAULT KEY : Set 1 – 4 numerals for the default key.

KEY 1 – 4 : Set these to match the WEP key registered in [DEFAULT KEY].

Either the 64-bit or 128-bit WEP key can be set. For the 64-bit key, input five alphanumerics (or a 10-digit string for the hexadecimal format) for the 128-bit key, input 13 alphanumerics (or a 26-digit string for the hexadecimal format).

■ When using [WPA-PSK[®]] or [WPA2-PSK[®]] : Set key and select [OK].

Input either 8 to 63 alphanumerics or a 64 digit string in the hexadecimal format.

※ “Glossary” (See page 67)

Note

Important video/audio data is protected because AES[®] encryption processing takes place in advance for all network numbers, even if [ENCRYPTION] is set to [NONE].

※ “Glossary” (See page 67)

Default settings of [USER1] - [USER3]

The following settings as network [USER1] - [USER3] are set before the projector leaves the factory.

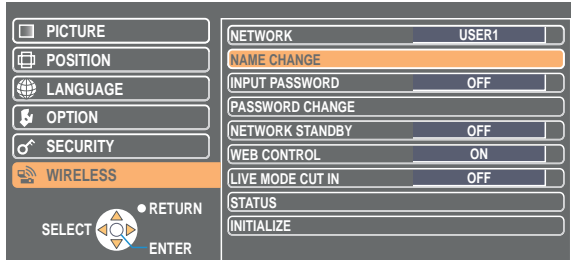
SSID	: Panasonic Projector
DHCP	: OFF
IP ADDRESS	: 192.168.11.100
SUBNETMASK	: 255.255.255.0
GATEWAY	: 192.168.11.1
MODE	: AD HOC
AUTHENTICATION	: OPEN
ENCRYPTION	: NONE
CHANNEL	: 11

Network setting of the projector (cont.)

Changing the projector name

You can change the projector name on the network.
It makes easy to recognize projectors in <Projector Search> window.

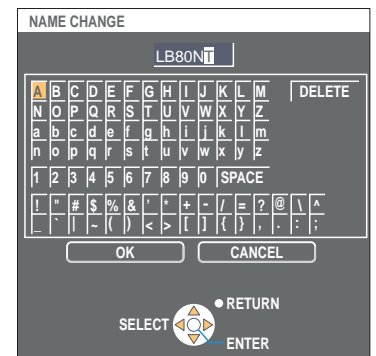
- 1 Select [NAME CHANGE] at the wireless menu and press the [ENTER] button.



- 2 Enter the projector name using the [◀▶▲▼ENTER] buttons.

- 3 After entering the projector name, select [OK] and click [ENTER].

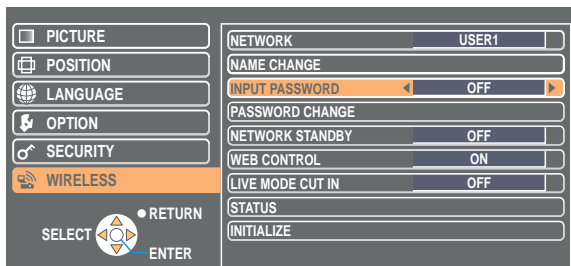
To cancel the change, select [CANCEL] and press the [ENTER] button.



Password setting

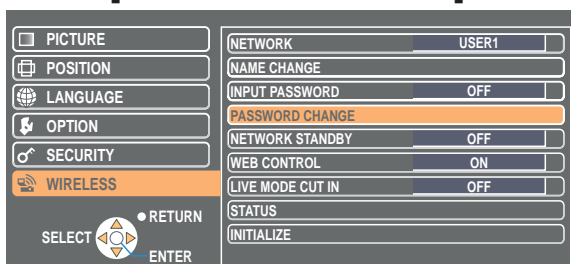
This setting is used to limit the users that can connect to the projector.

- 1 Select [INPUT PASSWORD] at the wireless menu.



- 2 Select [ON] with the [◀▶] buttons.

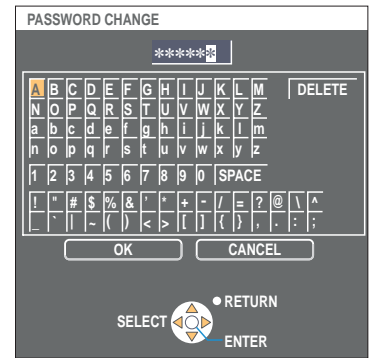
- 3 Select [PASSWORD CHANGE] at the wireless menu and press the [ENTER] button.



Network setting of the projector (cont.)

4 Enter the password using the [◀▶▲▼ENTER] buttons.

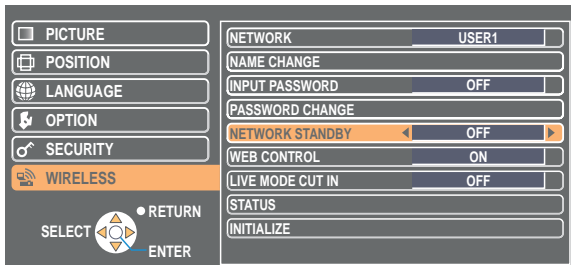
5 After entering the password, select [OK] and click [ENTER].
To cancel the change, select [CANCEL] and press the [ENTER] button.



Network standby

You can leave the projector connected to the computer, even when it is in standby mode.

1 Select [NETWORK STANDBY] at the network menu.

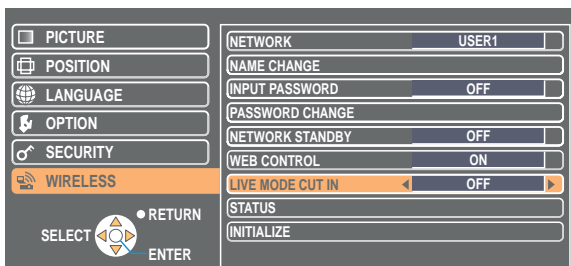


2 Select [ON] or [OFF] with the [◀▶] buttons.

Live mode cut-in

During live mode or multi live mode, a different computer can interrupt and project images in live mode.

1 Select [LIVE MODE CUT IN] at the wireless menu.



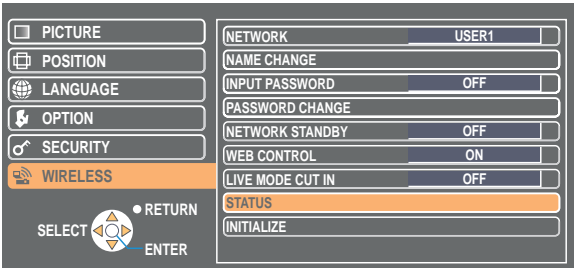
2 Select [ON] or [OFF] with the [◀▶] buttons.

Network setting of the projector (cont.)

Verifying settings

Select [STATUS] at the wireless menu and press the [ENTER] button.

Your current settings appear.



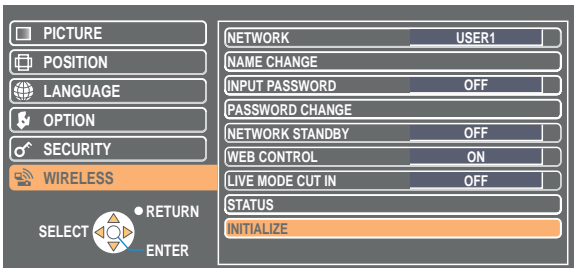
The status of the following will appear.

ANTENNA LEVEL	(The strength of the connection will appear.)
NETWORK	"DISABLE" "1" - "4", "USER1" - "USER3", "S-MAP"
MODE	"AD-HOC" - "INFRASTRUCTURE"
CHANNEL	Refer to page 5 for usable channels.
SSID	(See page 54)
AUTHENTICATION	"OPEN" - "SHARED" - "WPA-PSK" - "WPA2-PSK"
DEFAULT KEY	"_" - "1" - "4"
ENCRYPTION	"NONE" - "WEP" - "TKIP" - "AES"
DHCP	"OFF" - "ON"
IP ADDRESS	(See page 53)
SUBNETMASK	(See page 53)
GATEWAY	(See page 53)
MAC ADDRESS	

Returning to the initial settings

You can return the changed settings to the initial conditions.

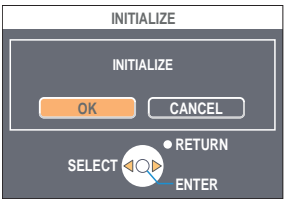
1 Select [INITIALIZE] at the wireless menu and press the [ENTER] button.



Note

You will be prompted to enter the password if [ON] has been selected as the [INPUT PASSWORD] setting on the [SECURITY] menu.

2 Select [OK] with the [◀ ▶] buttons and press the [ENTER] button.



Using WebBrowser

Control a projector through the WebBrowser of a computer. It is called "WEB Control".
(The example is when using Microsoft Internet Explorer.)

Before using the WebBrowser control

Connect projector and computer. (See page 14)

① Projector settings

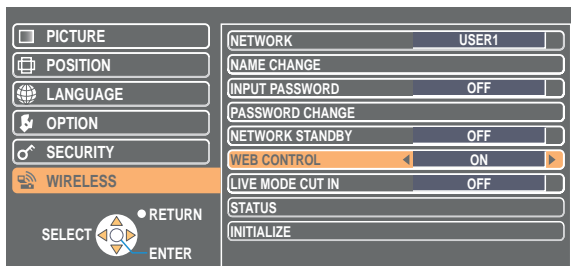
Set the [WEB CONTROL] of wireless menu [ON].

1 Select [WEB CONTROL] on the wireless menu.

2 Select [ON] or [OFF] with the [◀▶] buttons.

ON : This enables control on the WebBrowser.

OFF : This disables control on the WebBrowser.



Notes

- When the projector settings have been changed using a WebBrowser, the projector will not appear on the connection list until the projector network is switched to [USER 1] - [USER 3].
- After the projector network has been switched to [USER 1] - [USER 3], manually release the proxy settings of the WebBrowser used.

② Computer settings

■ Proxy server settings

Release the proxy settings of the WebBrowser used.

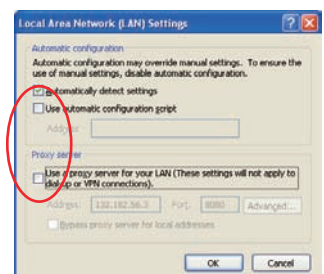
1 Open <Internet Properties> window.

Click [Start] → [Control Panel] → [Network and Internet Connections] → [Internet Option].

2 Open [Connections] → [LAN Settings].

3 If [Use a proxy server for your LAN] is checked, remove the check.

If [Use automatic configuration script] has been checked, remove the check.



4 Click [OK].

Using WebBrowser (cont.)

■ Enabling JavaScript

If JavaScript has been set to disable, enable it.

1 Open <Internet Properties> window.

Click [Start] → [Control Panel] → [Network and Internet Connections] → [Internet Option].

2 Select [Security] and set the security level to [Default Level], or select [Custom Level] and check the [Enable] checkbox under [Active scripting].

Accessing from the WebBrowser

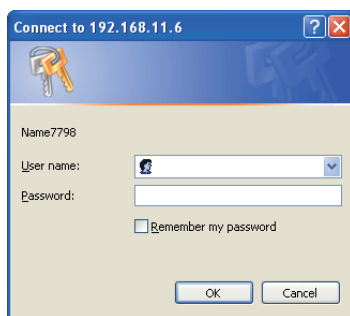
1 Click [WEB CONTROL] on the launcher.

Or start up the WebBrowser, and enter the IP address set by the projector.

The WebBrowser starts up and the authentication window appears.



<Top window>



2 Enter the user name and the password.

3 Click [OK].

<Monitored information> window appears. (Next page)

Notes

- The default user name and password settings are as follows.
User name: user1
Password: (The password is not set.)
- Password used in this page is for accessing the web control window. (See page 64)
This password is different from the password set in page 56 for accessing a projector.
- The system locks for several minutes if an incorrect password is entered three times in succession.
- No password is set at time of purchase or after default settings are restored. Be sure to set a password at such times.
- Make sure the password is as hard to guess as possible.
- Change the password periodically.
- If you forget the password, perform [INITIALIZE] using the network menu of the projector (See page 58) and set a password again using the <Change password> window on the WebBrowser. (See page 64)
- Matsushita Electric Industrial Co., Ltd. and its affiliated companies never directly ask customers for their password.
Do not give out your password even if directly asked by a third-party representing themselves as Matsushita Electric Industrial Co., Ltd.
- The top window may not appear depending on the WebBrowser. In this case start up WebBrowser again, or press the [Ctrl] + [R] keys for example to update the screen.
- Connection cannot be made while the WebBrowser is set to dial-up network. Cancel the dial-up network setting.
- It may take some moments for WebBrowser to start up.

Using WebBrowser (cont.)

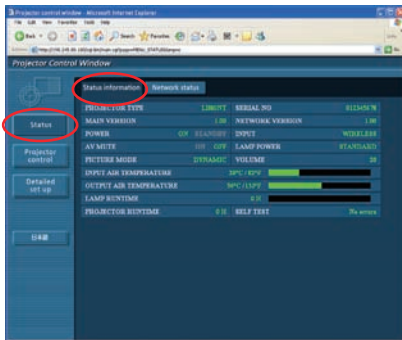
Monitor information window

This page indicates the projector status.

To access this page from other pages, click [Status] at the left of the window.

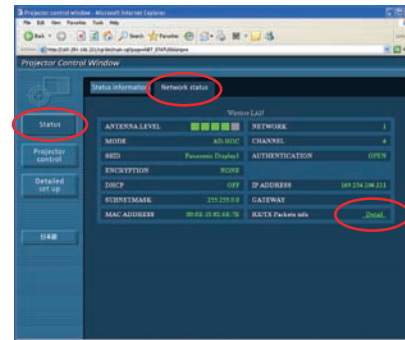
■ Monitored information

On this window, click the [Status information] tab.



■ Network information

On this window, click the [Network status] tab.



Click [Display] to switch to the detailed display window for the sent and received packet information.

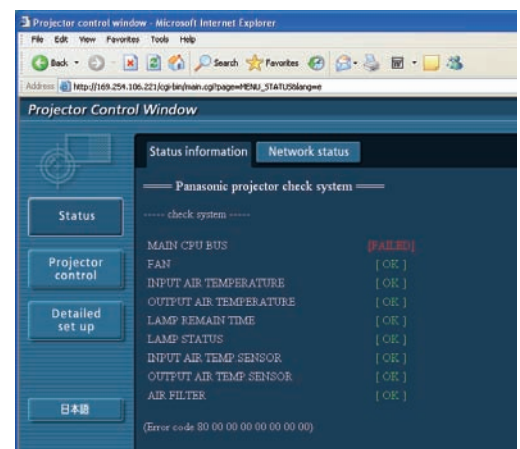
Note

The monitor information is refreshed at fixed intervals, but the current exact information can be checked by clicking [View] → [Refresh].

If [SELF TEST Error (Detail)] appears on the monitored information window, click it to view the error details.

SELF TEST

Error ([Detail](#))



■ If [FAILED] appears

Item	Description
MAIN CPU BUS	There is a problem with a microcontroller circuit. Contact your dealer.
FAN	There is a problem with the fan or fan drive circuit. Contact your dealer.
INPUT AIR TEMP. OUTPUT AIR TEMP.	Excessive temperature by the air intake or around the lamp area. The following may be causing the problem. <ul style="list-style-type: none"> • The ambient temperature is too hot; the projector may be near a heater • The exhaust vent is obstructed
LAMP REMAIN TIME	The lamp has been used for longer than its rated useful life, and it is time to replace it.
LAMP STATUS	The lamp could not be lit. Allow the bulb of the light source to cool, and then turn on the projector.
INPUT AIR TEMP.SENSOR	There is a problem with the air intake temperature sensor. Contact your dealer.
OUTPUT AIR TEMP.SENSOR	There is a problem with the exhaust temperature sensor. Contact your dealer.

Using WebBrowser (cont.)

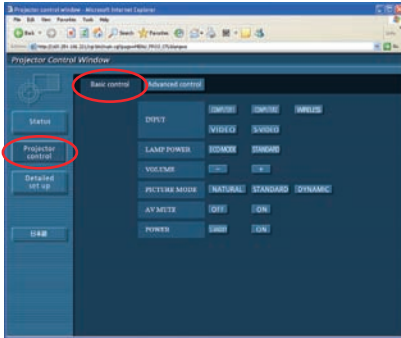
Projector control window

You can make various projector settings.

To access this page from other pages, click [Projector control] at the left of the window.

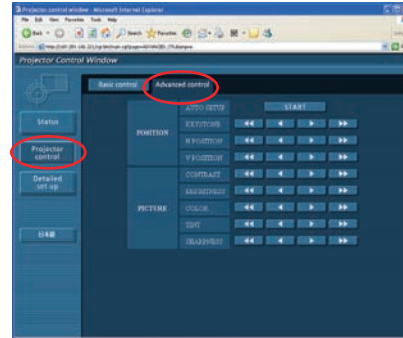
■ Basic control window

On this window, click the [Basic control] tab.



■ Advanced control window

On this window, click the [Advanced control] tab.



Note

Connection with the projector may not be possible immediately after the power is turned on. In this case wait a bit and then make the connection again.

Using WebBrowser (cont.)

Detailed settings window

You can make detail network settings on projector, when connecting without the administrator authority or when connecting through an access point (infrastructure mode).

■ LAN settings

1 Click [Detailed set up] in the menu.

2 Select the items to change and click [Next].

The settings window appears, showing the current settings.

- To change the LAN settings, click [Change].
- To return to the previous window, click [Back].

Settings in this page are the same when setting [USER 1] - [USER 3] from network menu of the projector. (See page 53)

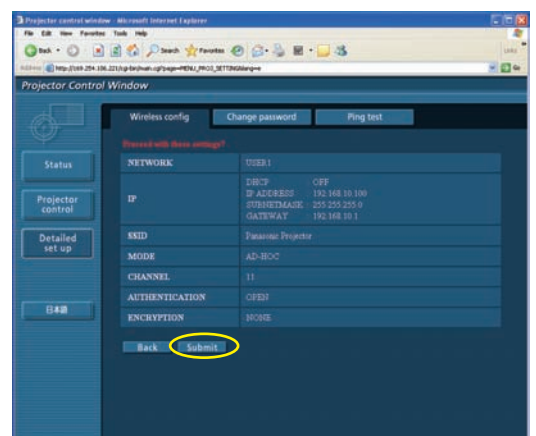
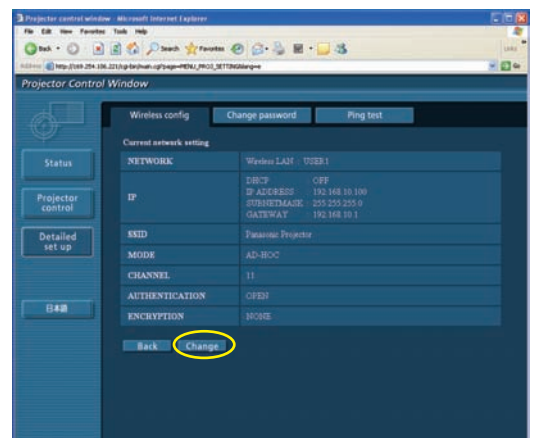
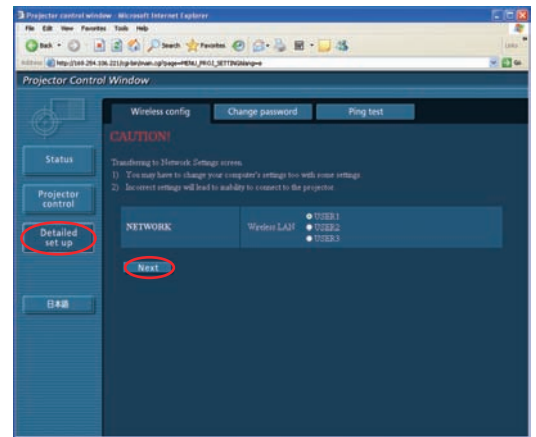
3 Complete the detailed settings and click [Next].

When [Next] is clicked, the next page appears, enabling you to complete the detailed settings as desired.

After all required items have been entered, a confirmation window appears.

4 Click [Submit].

The settings will be registered.



■ Making the above settings effective

Select [NETWORK] in the wireless menu of the projector, and use the [◀ ▶] buttons to select the network set in this page.

Notes

- Important video/audio data is protected because AES* encryption processing takes place in advance for all network numbers, even if [ENCRYPTION] is set to [NONE]. ※ "Glossary" (See page 67)
- If you have changed the LAN settings that are currently in use, the connection may break off.

Using WebBrowser (cont.)

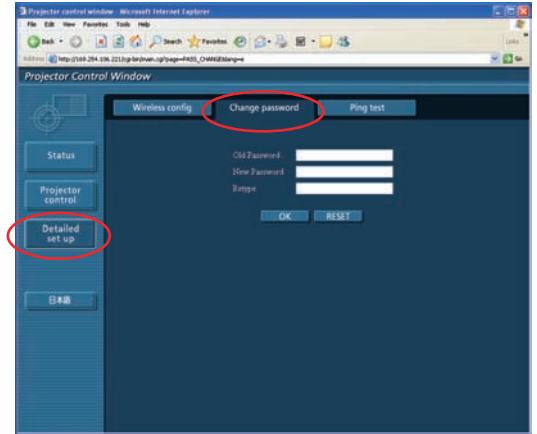
■ Password settings

Click [Detailed set up]→[Change password] in the menu.

Set a password for access of the [WebBrowser control window].
Enter the previous password and the new password.
Enter the new password in [Retype] and click [OK].

Note

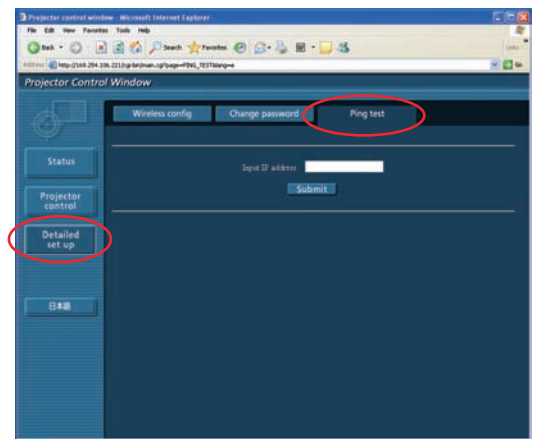
You can enter a password up to 16 characters (upper case/lower case) and symbols.



■ Connection test

Performs a test as to whether it is possible to connect to the target computer or access point.

Specify the destination that you want to test in the [Connection point IP address] field, and click [Submit].



Switching Languages

Switch the language of the WEB control window.

To access this page from other pages, click [English] [日本語] at the main menu.

Software Uninstall

Wireless Manager ME 5.0

From the desktop, select [Start] → [All Programs] → [Panasonic Wireless Display] → [Uninstall Wireless Manager mobile edition 5.0].

Follow the instructions appearing on the screen and uninstall the software.

Glossary

Category	Item	Descriptions	Page
Common Setting of connections	LAN	Abbreviation for Local Area Network. This is a network with a relatively narrow range such as inside a company.	10
	Access point	These are stations for relaying electromagnetic signals between computers in a wireless LAN. When a computer is connected to an access point, it can communicate through the network connected to the access point.	23
	MAC address	Each network card has its own ID No. A discrete ID No. is assigned to each and every network card around the world. These IDs are used to exchange data between cards. These IDs are a combination of a discrete number managed and assigned by the IEEE to each individual manufacturer and a unique number assigned to each individual card by the manufacturer.	23
	TCP/IP	Abbreviation for Transmission Control Protocol/Internet Protocol. This is the standard internet protocol. This protocol is a set of rules and agreements governing data communications between computers.	25
	IP address	Internet Protocol (IP) is a protocol for distributing data, and the address corresponding to the data distribution destination is called the IP address. The same IP address cannot be used within the same LAN.	24 26 30 53
	DHCP	Abbreviation for Dynamic Host Configuration Protocol. This function automatically assigns IP addresses to the connected equipment. If a device with the DHCP server function is present within a LAN, it automatically assigns IP addresses to the connected equipment.	24 26 53
	Subnetmask	This limits the range of the IP addresses assigned to computers in order to divide the network into a number of sections during TCP/IP connection. The value used to divide the network at this time is called the subnetmask.	24 26 53
	Gateway	This is a relay point for connecting different networks. This refers to the hardware and software used when connecting a network with a network that uses a different protocol, etc. It adjusts the protocol and other differences between networks to allow connection with other networks.	53
	Domain Name	The identifier that corresponds to the location to which data is delivered by the network. It is an alias name consisting of alphabet, numbers, and symbols that replace the more difficult to use enumerated IP address.	30

Glossary (cont.)

Category	Item	Descriptions	Page
Advanced setting of connection	AD_HOC	This is the mode in which computers communicate with each other directly, rather than via access points.	24 26 54
	INFRASTRUCTURE (infrastructure mode)	This is the mode in which communications are performed via the access point.	23 54
	SSID	Abbreviation for Service Set ID. The SSID identification code must be set to distinguish equipment included in a wireless LAN that uses access points from equipment not included in that LAN. This may appear as the "ESSID" or the "network name" for wireless LAN cards made by some manufacturers.	24 26 54
	Open System/ OPEN	This is an authentication of wireless signals employing a public key cryptosystem.	24 26 54
	Shared Key/ SHARED	This is a secret key cryptosystem for wireless signals in which authentication is performed with a key pre-set in the WEP. Other terms for this method, in which the same key is used for both encryption and decryption, are "shared key cryptosystem" and "common key cryptosystem".	24 26 54
	WPA-PSK WPA2-PSK	This is a standard covering encryption methods used in wireless LAN. It provides greater security than WEP, and has functions such as a user authentication function and also TKIP (encryption protocol) which automatically changes the encryption key at fixed intervals. And this authentication requires no authentication server.	54 55
	WEP	Abbreviation for Wired Equivalent Privacy. This is a method for encrypting communication data. The encryption key is created and notified only to the communicating user, so the communication data cannot be decrypted by a third party.	18 24 26 54 55
	TKIP	Abbreviation for Temporal Key Integrity Protocol. This encryption protocol provides even greater security than WEP because it changes the encryption key at fixed intervals.	54
	AES	These are the US Government's next-generation standard encryption methods, the selection work of which is performed by the National Institute of Standards and Technology (NIST).	18 54 55 63

Frequently Asked Questions

Check the following points once more before requesting repair.

No wireless connection can be made between my projector and my computer.

- **Is Wireless Manager ME 5.0 running?**

Wireless Manager ME 5.0 must be started in the computer in order to enable wireless transmissions of images to the projector.

<When a setting error for the wireless LAN card has been detected>

- ① **Is the wireless LAN card effective?**

Even if your computer has built-in wireless LAN, the wireless LAN may still be turned OFF. If so, turn it ON and re-start Wireless Manager ME 5.0. See the User's Manual of your computer to learn how to turn the wireless LAN power ON/OFF.

- ② **Is your wireless LAN card properly recognized on the network?**

Sometimes, cards are not correctly recognized by the computer. Check Windows [Device Manager] to make sure your card has been recognized.

If the Network Adapter is indicated with [?] in [Device Manager], wireless LAN card installation is not complete. See the User's Manual of your card and re-install the card driver.

■ To display [Device Manager]

Click [Start] → [Control Panel] → [Performance and Maintenance] → [System]. This will bring up the [System Properties] dialog box. Click [Device Manager] in the [Hardware] tab.

- ③ **Some wireless LAN cards may allow Easy Wireless Set Up connections to function if drivers are updated.**

(Consult the manufacturer of your driver about updates.)

Frequently Asked Questions (cont.)

No wireless connection can be made between my projector and my computer. (cont.)

<When the Network Bridge setting has been detected>

Is Network Bridge enabled?

Some computers with Windows XP, and Windows Vista may have Network Bridge (a built-in function of Windows XP, and Windows Vista) enabled; this will prevent a wireless connection.

The settings in Network Bridge must be changed in order to make a wireless connection. If you do not expect ever to use Network Bridge and see no need for it, delete it from your system.

■ To verify whether your system has Network Bridge (Windows XP)

Choose [Connect to] on the [Start] menu and click [Show all connections]. Verify that [Network Bridge] is displayed in the <Network Connections> window. Perform either ① or ② below.

① How to change settings in Network Bridge

1. Select [Connect to] on the [Start] menu and click [Show all connections].
2. Right-click [Network Bridge] and click [Properties].
3. Remove the check mark from the [Wireless Network Connection] box in the [Network Bridge Properties] dialog box (if the box is not checked, proceed to step 4.)
4. Click [Properties] in [Internet Protocol (TCP/IP)] in the [Network Bridge Properties] dialog box.
5. Click the [Alternate Configuration] tab in the [Internet protocol (TCP/IP) properties] dialog box.
6. Check the [User configured] box and set the [IP address] and [Subnet mask] as follows:
IP address : 10. 10. 11. 101
Subnet mask : 255.255. 0. 0
(If the above IP address is already in use in the LAN environment, change it as appropriate in Class A. Confirm to your system administrator on network settings before changing any settings.)
7. Click [OK] → [Close].
8. Close the [Network Connections] dialog box.

② How to delete the network bridge

1. Select [Connect to] on the [Start] menu and click [Show all connections].
2. Right-click [Network Bridge] and click [Delete].

■ To verify whether your system has a Network Bridge (Windows Vista)

Select [Control Panel] on the [Start] menu, and double-click on [Network and Sharing Center]. Select [Manage network connections] in the [Network and Sharing Center] dialog box. Verify that [Network Bridge] is displayed in the [Network connection] dialog box.

Perform either ① or ② below.

① How to change settings in Network Bridge

1. Select [control panel] on the [Start] menu, and double-click on [Network and Sharing Center].
2. Select [Manage network connections] in the [Network and Sharing Center] dialog box.
3. Right-click [Network Bridge] and click [Properties].
4. Click [Continue] in [User Account Control].
5. Remove the check mark from [Wireless Network Connection] box in the [Network Bridge Properties] dialog box (if the box is not checked, proceed to step 6).
6. Click properties in [Internet Protocol Version 4 (TCP/IPv4)] in the [Network Bridge Properties] dialog box.
7. Click the [Alternate Configuration] tab in the [Internet Protocol Version 4 (TCP/IPv4) Properties] dialog box.
8. Check [User Configuration], and set the [IP address] and [Subnet Mask] as follows:
IP address : 10. 10. 11. 101
Subnet mask : 255.255. 0. 0
(If the above IP address is already in use in the LAN environment, change it as appropriate in Class A. Confirm to your system administrator on network settings before changing any settings.)
9. Click [OK]→ [Close].
10. Close the [Manage Network Connections] dialog box.
11. Close the [Network and Sharing Center] dialog box.

② How to delete the Network Bridge.

1. Select [Control Panel] from the [Start] menu, and double-click on [Network and Sharing Center].
2. Select [Manage network connections] in the [Network and Sharing Center] dialog box.
3. Right-click [Network Bridge] and click [Delete].
4. Click [Yes] in the [Confirm Connection Delete] dialog box.
5. Click [Continue] in [User Account Control].

Frequently Asked Questions (cont.)

No wireless connection can be made between my projector and my computer. (cont.)

<When Windows Firewall has been detected>

● Windows XP

Has Windows XP firewall been disabled?

The firewall in Windows XP must be disabled in order to connect to a wireless network.

■ How to disable the firewall in Windows XP

1. Click [Start] → [Control Panel] → [Network and Internet Connections] → [Network Connections].
2. Right-click [Wireless Network Connection] and click [Properties] in the pulldown menu.
3. Click the [Advanced] tab and set the [Internet Connection Firewall] checkbox to OFF.

● Windows XP SP2

Is Wireless Manager ME 5.0 registered in the [Control Panel] → [Security Center] → [Windows Firewall] → [Exception] tab with the Windows XP SP2.

Register Wireless Manager ME 5.0 in the Exceptions to Application List of the firewall.

■ How to register

1. Click [Start] → [Control Panel].
2. Click [Security Center] → [Windows Firewall] when <Control Panel> window opens.
3. Click the [Exceptions] tab and then [Add Program...] when the <Windows Firewall> window opens.
4. Click [Wireless Manager mobile edition 5.0 (WM.exe)] to allow connection with external devices under [Programs] when the <Add a Program> window opens.
If [Wireless Manager mobile edition 5.0 (WM.exe)] does not appear on the list of programs, click [Browse...] and select [WM.exe].
5. [Wireless Manager mobile edition 5.0] is displayed in the [programs and services] field.
6. Double-click [Wireless Manager mobile edition 5.0], and open the [Edit a Program] window.
7. Click the [Change Scope] button at the lower left of the window.
8. When the [Change Scope] window opens, select the desired network as described below. Select [Any computer (including those on the Internet)].
9. Click [OK].
10. Click [OK] in the [Edit a Program] window.
11. Click [OK] in the [Windows Firewall] window.
With this, the Wireless Manager ME 5.0 firewall will be deleted.

● Windows Vista

Is Wireless Manager ME 5.0 registered in the [Start] → [Control Panel] → [Windows Firewall] → [Allow a program through Windows Firewall] → [Exceptions] tab?

Register Wireless Manager ME 5.0 in the Exceptions to Application List of the firewall.

■ How to Register

1. Click [Start] → [Control Panel].
2. Double-click the [Windows Firewall] tab when the [Control Panel] window opens.
3. Click [Allow a program through Windows Firewall] when the [Windows Firewall] dialog box opens.
4. Click [Continue] in [User Account Control].
5. Click the [Exceptions] tab and then [Add program...] when the [Windows Firewall Settings] window opens.
6. Click [Wireless Manager mobile edition 5.0] when the [Add program...] window opens.
If [Wireless Manager mobile edition 5.0] does not appear in [Programs], click [Browse...] and select [WM.exe].
7. [Wireless Manager mobile edition 5.0] is displayed in the [Program or port] field.
8. Double-click [Wireless Manager mobile edition 5.0], and open the [Edit a Program] window.
9. Click the [Change scope...] button at the lower left of the window.
10. When the [Change scope] window opens, select the desired network as described below. Select [Any computer (including those on the Internet)].
11. Click [OK].
12. Click [OK] in the [Edit a Program] window.
13. Click [OK] in the [Windows Firewall] window.
14. With this, the Wireless Manager ME 5.0 firewall will be deleted.

Frequently Asked Questions (cont.)

No wireless connection can be made between my projector and my computer. (cont.)

<When another firewall has been detected>

Are any firewall-containing applications installed?

If any applications which contain firewalls are installed, the installation may hang up at the [Projector search in progress] display (some firewalls function even when not started).

If this occurs, firewall settings must be changed in order to allow connection to the wireless network. See the User's Manuals for all applications containing firewalls to perform these settings.

<When the user does not have the administrator authority>

- If you have logged onto a computer as a [GUEST] or a restricted user who does not have administrator authority, you can not perform Easy Wireless Set Up ([S-MAP], Network No. [1] – [4]). If you must perform Easy Wireless Set Up without administrator authority, designate [USER1] - [USER3] as the network number.
See pages 53 - 55 for instructions in how to set [USER1] - [USER3] as the network number.
- With the connection method in "When logging on without administrator authority," when the "Wireless Networks" tab is not shown, complete the following settings.
 1. Click [Start]→[Control Panel]→[Performance and Maintenance]→[Administrative Tools]→[Services].
The <Services> window appears.
 2. Find [Wireless Zero Configuration] in the list.
 3. If the status is blank, right-click it and select [Properties].
 4. In [Service status], click [Start].
If you cannot click the [Start] button for [Service status] (it is grayed out), check whether [Type of startup] is set to [Manual] or [Automatic]
 5. Click [OK].
The status is now shown as [Started].
 6. Close the window.


<Network setting error>

When connecting with Network number [USER1] - [USER3], make sure whether Wireless menu setting of the projector is correct or not. (See page 53)

Frequently Asked Questions (cont.)

Wireless connection is lost shortly.
<ul style="list-style-type: none">• If the live mode is canceled or the connection is lost, start the reconnection procedure from the launcher. If it is still not possible to establish a connection to the LAN, power off the projector, wait for the cooling fan to stop operating (after the power monitor on the projector changes from orange to red), power the projector back on, and then start the connection procedure from the launcher once again. (See page 14)
The connection has been lost in the multi live mode.
<ul style="list-style-type: none">• If a computer with a certain version of the Intel Centrino mobile technology (wireless LAN) is connected to the unit, the multi live mode may be released. If this is the case, re-establish the connection from the launcher of Wireless Manager ME 5.0. (See page 33)
The connection cannot be established with IEEE802.11 g.
<ul style="list-style-type: none">• In environments with wireless LAN adapters that support both IEEE802.11b and IEEE802.11g, the connection may be established via IEEE802.11b.• In some operating environments, the connection may be established via IEEE802.11b, depending on the location, radio signal conditions, distance, or other factors.• Some wireless LAN adapters only support ad hoc connections via IEEE802.11b.
The transfer rate is slow.
<ul style="list-style-type: none">• The transfer rate may be slower in some operating environments (depending on such factors as the location, radio signal conditions or distance).• Avoid placing metal objects or other conductors near the wireless LAN antenna of a computer, otherwise the transfer rate may be slower.• When WEP is set the image data is converted, so transfer takes time.
Image display is slow or animation is not displayed smoothly.
<ul style="list-style-type: none">• Is the computer CPU speed slow? (See page 11) Live mode depends largely upon the computer CPU performance.• Adverse effects may be exerted if there is any wireless communication in the vicinity.• When [Resolution] is set to [High Definition] in the <Option> window (See page 49), it may take longer time to display images.• Did you start up Microsoft PowerPoint or Windows Media Player before starting up Wireless Manager ME 5.0? If so, start up the application only after you have started up Wireless Manager ME 5.0.• The speed may drop significantly if the user does not have administrator authority.• The speed may be slower when any other applications are running concurrently.
Contents of DVD or MPEG2 cannot be played on computer.
<p>The following limitations apply when Wireless Manager ME 5.0 is running.</p> <ul style="list-style-type: none">• DVD and MPEG2 playback is disabled.• When using 3-D software, performance may be poor. Some items may not be rendered properly, and some operations may not work correctly. <p>To correct such problems, quit Wireless Manager ME 5.0 and use an RGB cable to connect the computer to the projector.</p>

Frequently Asked Questions (cont.)

There is a time lag between operations at the computer and results in the projected image.
<ul style="list-style-type: none">• Wireless Manager ME 5.0 reads the screen, compresses the data and transmits it to the projector. In the projector, the received data are extracted and then projected. Some delays occur in this system, due to the processing time and factors in the wireless environment. Different computers may also produce varying lag times.
I can't hear the computer sound from the projector in the live mode.
<ul style="list-style-type: none">• Check whether the check mark has been entered for [Produce audio along with video at live mode] from [Live Mode Settings] under the [Transmission] tab selected from Wireless Manager ME 5.0's <Option> window. (See page 49)• Did you start up a player (Windows Media Player, Real Player or Quick Time, etc.) before starting live mode? If so, start the application only after starting live mode.
Don't know to which projector the computer is connected in multiple source live mode or multiple source multi live mode.
<ul style="list-style-type: none">• Connected projectors' names, IDs and their status are displayed in the pop up window when the cursor is on  of the launcher.
Changing the display style.
<ul style="list-style-type: none">• Press the remote control [MULTI-LIVE] button to change the display style.
The Wireless Manager ME 5.0 color display is strange and characters are difficult to read.
<ul style="list-style-type: none">• Click [Start] → [Control panel] → [Appearance and Themes] → [Display]. Then, open the [Settings] tab of the <Display Properties> window and set [Color quality] to [Medium (16 bit)] or higher.
Screen saver is not displayed properly in live mode.
<ul style="list-style-type: none">• Some screen savers may not be displayed properly in the live mode. Check the [Disable screen saver] box in [Live Mode Settings] in the <Option> window of Wireless Manager ME 5.0. (See page 49)
Making a wireless LAN connection while using the internet
<ul style="list-style-type: none">• If you have a wireless LAN environment which allows an internet connection, placing the projector on that network will allow you to use the internet and the wireless connection at the same time. (See page 23)• If you have a wired internet connection (Ethernet), this projector allows wireless use with simultaneous wired connection to the internet.
The web control window does not appear.
<p><When Easy Wireless Set Up connection is used></p> <ul style="list-style-type: none">• When any WebBrowser except Internet Explorer is used, the proxy settings of the WebBrowser must be manually released. <p><When [USER] connection is used></p> <ul style="list-style-type: none">• Manually release the proxy settings of the WebBrowser used.

Frequently Asked Questions (cont.)

When Windows Media Player 11 is used with Windows Vista, audio is disconnected in the live mode.
<ul style="list-style-type: none">• When using Windows Media Player 11, close as many other running programs as possible. If there still are dropouts in the audio, try using another player application.
When using Wireless Manager ME 5.0 with Windows Vista, the launcher is projected.
<ul style="list-style-type: none">• This limitation applies when installing and using the software under Windows Vista.
The “Aero” setting is cancelled.
<ul style="list-style-type: none">• When Wireless Manager ME 5.0 is running, the “Aero” setting is cancelled.

Trademarks

- Microsoft and its logo as well as Windows, Windows XP®, Windows Vista®, Windows Media, and PowerPoint are either registered trademarks or trademarks of Microsoft Corporation in the United States and/or other countries.
- Intel, Pentium and Centrino are registered trademarks or trademarks of Intel Corporation or its affiliates in the United States and other countries.
- Other company names, product names or other names noted in this manual are trademarks or registered trademarks of the respective companies. Note that ® and TM marks are not indicated in the text of this manual.

Notes:

- Unauthorized use or reproduction of part or all of this product software and manuals is strictly prohibited.
- Panasonic cannot be held liable for any effects resulting from the use of this product software and manuals.
- Panasonic reserves the right to revise this product software specifications and manual contents without notice.

Panasonic Corporation

Web Site : <http://panasonic.net/pavc/projector/>

© Panasonic Corporation 2008

Panasonic Projector Systems Company

Unit of Panasonic Corporation of North America

One Panasonic Way, Secaucus, NJ 07094

TEL: (201) 392 - 6591

Technical Support:

TEL: (888) 411 - 1996

FAX: (201) 348 - 7523

E-Mail: projectorsupport@us.panasonic.com

Panasonic Canada Inc.

5770 Ambler Drive, Mississauga, Ontario L4W 2T3

TEL: (905) 624 - 5010

Panasonic Puerto Rico, Inc.

Ave. 65 de Infanteria, Km 9.5 San Gabriel Industrial Park, Carolina, Puerto Rico 00985

TEL: (787) 750 - 4300