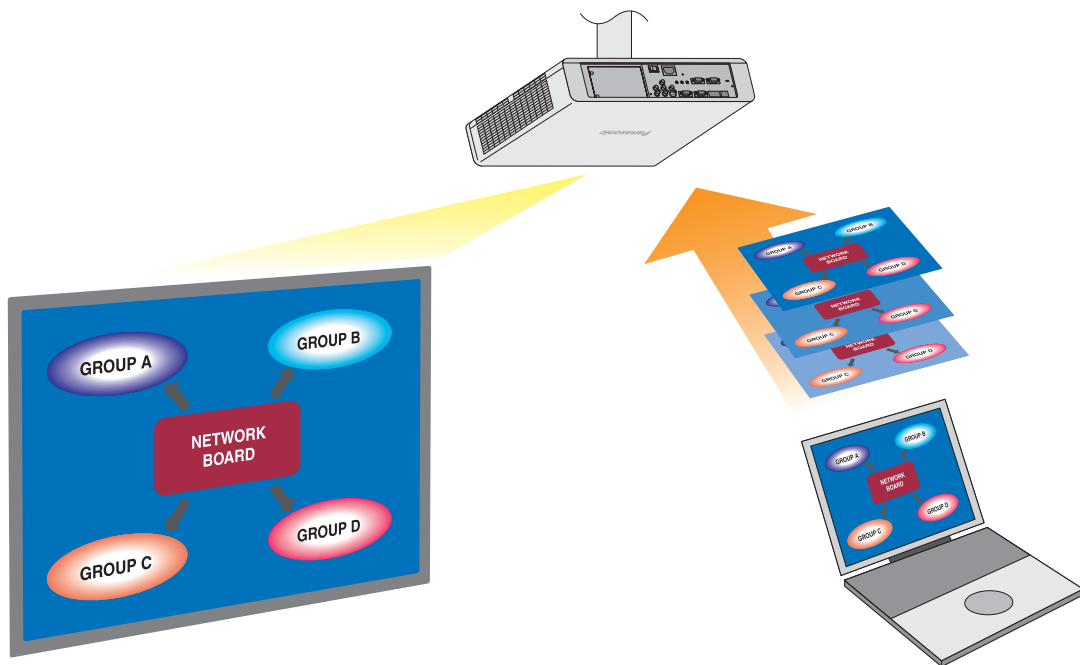


## Operation Manual

**Windows**

### Wireless Manager ME 5.5

Wireless Manager mobile edition 5.5



# Contents

---

|   |          |   |           |
|---|----------|---|-----------|
| <b>Software Licensing Agreement</b> .....       | <b>3</b> | <b>What you can do with Wireless Manager mobile edition 5.5</b> ..... | <b>7</b>  |
| <b>Notes on Using Wireless Connection</b> ..... | <b>4</b> | <b>Check your computer</b> .....                                      | <b>10</b> |
| <b>Request Regarding Security</b> .....         | <b>6</b> | Necessary environment for computers to be connected .....             | 10        |

---

|   |           |                                  |           |
|---|-----------|----------------------------------|-----------|
| <b>Installing/Uninstalling software</b> ..... | <b>12</b> | <b>System requirements</b> ..... | <b>12</b> |
|---|-----------|----------------------------------|-----------|

---

|   |           |  |           |
|---|-----------|--|-----------|
| <b>Connecting with wireless LAN</b> ..... | <b>14</b> | “PC Search” Connection .....                                 | 20        |
| <b>Preparations</b> .....                 | <b>14</b> | Connection error messages .....                              | 22        |
| <b>Easy Wireless Set Up</b> .....         | <b>14</b> | <b>Connecting through the access point</b> .....             | <b>24</b> |
| Parts name in search screen .....         | 15        | <b>When logging on without administrator authority</b> ..... | <b>25</b> |
| “S-MAP” Connection .....                  | 18        |  |           |
| “1-4/U” Connection .....                  | 19        |  |           |

---

|  |           |  |  |
|--|-----------|--|--|
| <b>Connecting with Wired LAN</b> ..... | <b>28</b> |  |  |
|--|-----------|--|--|

---

|   |           |  |    |
|---|-----------|--|----|
| <b>Other operations for connection</b> .....                    | <b>29</b> | Automatic connection by “One-click connection” ..... | 30 |
| Operations when password entry is required for connection ..... | 29        | Exit Wireless Manager .....                          | 31 |
| Other search .....  | 29        |  |    |

---

|   |           |  |           |
|---|-----------|--|-----------|
| <b>Various projection methods</b> .....   | <b>32</b> | 4-screen multi style .....                   | 36        |
| <b>Description of the launcher</b> .....  | <b>32</b> | 4-screen index style.....                    | 37        |
| <b>Live Mode</b> .....                    | <b>34</b> | 16-screen index style .....                  | 39        |
| <b>Multi Live Mode</b> .....              | <b>35</b> | <b>Multiple Source Live Mode</b> .....       | <b>40</b> |
| Switching from one style to another ..... | 35        | <b>Multiple Source Multi Live Mode</b> ..... | <b>42</b> |

---

|   |           |                                   |           |
|---|-----------|-----------------------------------|-----------|
| <b>Useful Functions</b> .....               | <b>44</b> | <b>AV Mute function</b> .....     | <b>46</b> |
| <b>Selective Area Transmission</b> .....    | <b>44</b> | <b>Pointer function</b> .....     | <b>46</b> |
| <b>Secondary display transmission</b> ..... | <b>45</b> | <b>WEB control function</b> ..... | <b>46</b> |
| Secondary Viewer .....                      | 45        | <b>USB display function</b> ..... | <b>47</b> |

---

|                              |           |                           |    |
|------------------------------|-----------|---------------------------|----|
| <b>Setting options</b> ..... | <b>49</b> | Key setting.....          | 50 |
| <b>Setting options</b> ..... | <b>49</b> | Other1 .....              | 50 |
| Transmission.....            | 49        | Other2 .....              | 51 |
|                              |           | Version information ..... | 51 |

---

|   |           |                           |           |
|---|-----------|---------------------------|-----------|
| <b>Glossary</b> .....                   | <b>52</b> | <b>GNU LICENSES</b> ..... | <b>61</b> |
| <b>Frequently Asked Questions</b> ..... | <b>54</b> | <b>Trademarks</b> .....   | <b>68</b> |

---

# Software Licensing Agreement

---

Use of this Software is governed by the terms defined in this Software Licensing Agreement.

● **Article 1 License**

The users obtain the license of the software (i.e. the information recorded or contained in CD-ROM, operation manual or others), but the copyright or intellectual property right of the software does not transfer to the users.

● **Article 2 Use by a Third Party**

Licensee may not transfer or allow any third party, to use or copy the Software, whether free of charge or not.

● **Article 3 Restrictions on Copying the Software**

Licensee may make a single copy of the Software in whole or in part solely for backup purposes.

● **Article 4 Computer**

Licensee may install and use the Software on more than one computer owned or managed by Licensee.

● **Article 5 Reverse Engineering, Decompiling or Disassembly**

Licensee may not reverse engineer, decompile or disassemble the Software. Panasonic shall not be bound by warranty for any defects in the Software caused by Licensee's reverse engineering, decompiling or disassembly of the Software. Furthermore, Panasonic or its distributors or dealers will not be responsible for any damage to the Licensee caused by Licensee's reverse engineering, decompiling or disassembly of the Software.

● **Article 6 After-sales Service**

If you have a problem with the software, please contact the customer support center by telephone. Panasonic shall undertake to notify Licensee of whether the problem is a known error in the program ("bug"), or whether the way in which the Software is to be used should be modified.

Furthermore, the Software is subject to revision without prior notice.

● **Article 7 Indemnification**

Panasonic's liability with respect to this Software is limited to the conditions defined in Article 6 herein.

Panasonic or any of its distributors or dealers shall not be liable for any damage suffered by Licensee, either directly or through claims from a third party, arising from or in connection with Licensee's use of the Software.

Furthermore, Panasonic Corporation does not guarantee the successful operation of the software unless it is used with any of Panasonic projectors.

● **Article 8 Export Control**

Licensee agrees not to export or re-export the Software to any country other than the country of purchase of the projector in any form without the appropriate export licenses under the regulations of the country where Licensee resides or of any other country as may be required by such export or re-export.

Wireless Manager mobile edition 5.5 (hereinafter called "Wireless Manager ME 5.5") uses the following software programs:  
Portion of this software are based in part on the work of the Independent JPEG Group

**<Software information regarding this product>**

© Panasonic Corporation 2011

This product incorporates the following software:

(1)the software which is developed independently by or for Panasonic Corporation

(2)the software which is licensed under the GNU GENERAL PUBLIC LICENSE,

and

(3)the software which is licensed under the GNU LESSER GENERAL PUBLIC LICENSE.

Regarding the license conditions (2) and (3) concerning software, refer to the regulations in the GNU GENERAL PUBLIC LICENSE and GNU LESSER GENERAL PUBLIC LICENSE at the end of this document.

If you wish to ask any questions as to the software, please contact (sav.pj.gpl.pavc@ml.jp.panasonic.com) by email.

**Please note the following.**

Panasonic cannot be held liable for damages arising from data corruption or loss as a result of using this projector.

# Notes on Using Wireless Connection

---

Wireless connection function of the projector uses radio waves in the 2.4 GHz band.

A radio station license is not required, but be sure to read and fully understand the following items before use.

## ■ Do not use near other wireless equipment.

The following equipment may use radio waves in the same band as the projector.

When the projector is used near these devices, radio wave interference may make communication impossible, or the communication speed may become slower.

- Microwave ovens, etc.
- Industrial, chemical and medical equipment, etc.
- In-plant radio stations for identifying moving objects such as those used in factory manufacturing lines, etc.
- Designated low-power radio stations

## ■ If at all possible, avoid the use of cellular phones, TV sets or radios near the projector.

Cellular phones, TV sets, radios and similar devices use different radio bands from the projector, so there is no effect on wireless communication or the transmission and reception of these devices. However, radio waves from the projector may produce audio or video noise.

## ■ Wireless communication radio waves cannot penetrate steel reinforcements, metal, concrete, etc.

Communication is possible through walls and floors made from materials such as wood and glass (except glass containing wire mesh), but not through walls and floors made from steel reinforcements, metal, concrete, etc.

## ■ Avoid using the projector in locations prone to static electricity.

If the projector is used in a location prone to static electricity, such as on a carpet, the wireless LAN or wired LAN connection may be lost.

If this happens, eliminate the source of static electricity or electromagnetic noise and reconnect to the wireless LAN or wired LAN.

In rare cases static electricity or electromagnetic noise may make it impossible to establish a connection to the LAN.

If this happens, press the power button on the remote control or on the projector to power off the projector temporarily.

After the cooling fan stops operating (after the power monitor on the projector changes from orange to red), power on the projector and reconnect to the LAN.

## ■ Using the projector outside the country

It is forbidden to take the projector outside the country or region where you purchased it, so use it only in the said country or region. Also, note that depending on countries or regions there are restrictions on the channels and frequencies at which you can use the wireless LAN.

## Notes on Using Wireless Connection (cont.)

### ■ Channels that can be used

The channels (frequency range) that can be used differ according to the country or region. Refer to the table below.

| Country or region  | Standard     | Channels used | Frequency band<br>(Center frequency) |
|--|--------------|---------------|--------------------------------------|
| Japan  | ARIB STD-T66 | 1 - 13        | 2,412 MHz -<br>2,472 MHz             |
| China  | SRRC         |               |                                      |
| England, Germany, France, Spain,<br>Italy, Belgium, Austria, Sweden, Norway,<br>Denmark, Switzerland, Holland, Finland,<br>Portugal, Greece, Thailand, South Korea | ETSI 300.328 |               |                                      |
| Singapore  | IDA          |               |                                      |
| Australia,<br>New Zealand  | C-Tick       |               |                                      |
| Malaysia   | SIRIM        |               |                                      |
| United States  | FCC part 15  | 1 - 11        | 2,412 MHz -<br>2,462 MHz             |
| Taiwan   | DGT          |               |                                      |

### ■ Wired LAN

Use straight or crossover LAN cable that is compatible with category 5 or above.

Whether straight cable, crossover cable or both can be used varies depending on the system configuration. For details, consult your system administrator.

# Request Regarding Security

---

When using this product, security breaches of the type described below are conceivable.

- Leakage of your private information via this product
- Illegal operation of this product by a malicious third-party
- Harm to or cessation of operation of this product by a malicious third-party

Be sure to implement sufficient security measures.

- Set passwords, and limit the users that are permitted login access.
- Make sure the password is as hard to guess as possible.
- Change the password periodically.
- Panasonic Corporation and its affiliated companies never directly ask customers for their password.  
Do not give out your password even if directly asked by a third-party representing themselves as Panasonic Corporation.
- Always use on a network that has safety protection such as a firewall implemented.

## About Wireless LANs

The advantage of a wireless LAN is that information can be exchanged between a PC or other such equipment and an access point using radio waves as long as you are within range for radio transmissions.

On the other hand, because the radio waves can travel through obstacles (such as walls) and are available everywhere within a given range, problems of the type listed below may occur if security-related settings are not made.

- A malicious third-part may intentionally intercept and monitor transmitted data including the content of e-mail and personal information such as your ID, password, and/or credit card numbers.
- A malicious third-party may access your personal or corporate network without authorization and engage in the following types of behavior.
  - Retrieve personal and/or secret information (information leak)
  - Spread false information by impersonating a particular person (spoofing)
  - Overwrite intercepted communications and issue false data (tampering)
  - Spread harmful software such as a computer virus and crash your data and/or system (system crash)

Since most wireless LAN adapters or access points are equipped with security features to take care of these problems, you can reduce the possibility of these problems occurring when using this product by making the appropriate security settings for the wireless LAN device.

Some wireless LAN devices may not be set for security immediately after purchase. To decrease the possibility of occurrence of security problems, before using any wireless LAN devices, be absolutely sure to make all security-related settings according to the instructions given in the operation manuals supplied with them.

Depending on the specifications of the wireless LAN, a malicious third-party may be able to break security settings by special means.

Please contact Panasonic if you need help taking care of security settings or other such.

If you cannot perform security settings for your wireless LAN by yourself, please contact the Panasonic Support Center.

Panasonic asks customers to thoroughly understand the risk of using this product without making security settings, and recommends that the customer make security settings at their own discretion and responsibility.

# What you can do with Wireless Manager mobile edition 5.5

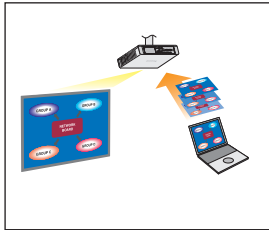
---

## ● Network Transmission

You can connect the projector to a computer via the wireless LAN or the wired LAN, and send moving and still images. For information on the connection, refer to the description on page 14 for wireless LAN, and page 28 for wired LAN.

## ● Project with various methods

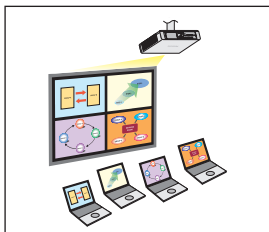
<Live mode> (See page 34)



Used for normal presentations.

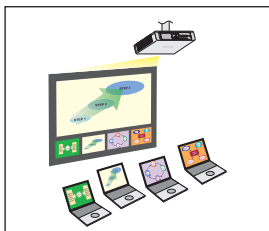
<Multi live mode> (See page 35)

- 4-screen multi style (See page 36)



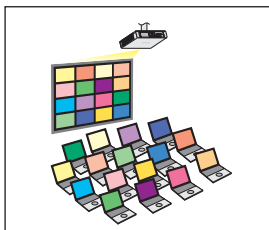
Used for presentations involving multiple computers.

- 4-screen index style (See page 37)



This style is convenient in cases where you wish to focus attention on one of four presentations displayed simultaneously.

- 16-screen index style (See page 39)

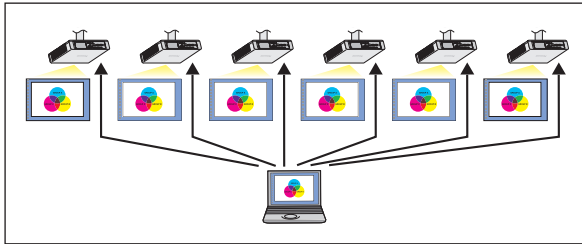


This style is convenient in cases where you wish to display a large number of presentations as a list.

# What you can do with Wireless Manager mobile edition 5.5 (cont.)

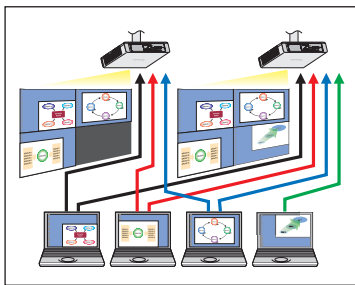
## ● Project with multiple projectors

<Multiple source live mode> (See page 40)



This arrangement can be used when a number of projectors are installed in a large conference room, or when holding simultaneous presentations in several conference rooms, for example.

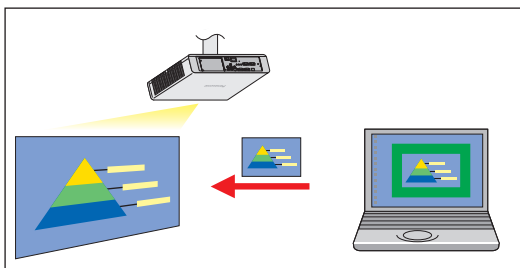
<Multiple source multi live mode> (See page 42)



This arrangement can be used when you wish to simultaneously display multiple presentations using multiple projectors.

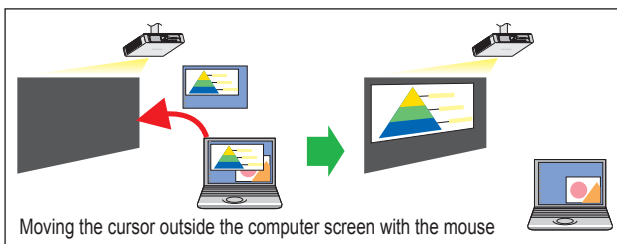
## ● Useful functions

<Selective area transmission> (See page 44)



By using the selective area window, you can specify the necessary information alone from the computer screen, and display it on the projection screen.

<Secondary display transmission> (See page 45)



You can set the computer screen and the projector screen to the multi-monitor mode, and use the computer screen as the primary monitor and the projector screen as the secondary monitor. This is convenient for when holding a presentation using the projector screen while displaying reference material on the computer screen.

### Note

For details on the secondary display transmission function, see the "Secondary Display Transmission Function Advanced Operation Guide".



## What you can do with Wireless Manager mobile edition 5.5 (cont.)

---

### <Virtual remote control function> (See page 33)

You can perform the following operation from a PC, using the virtual remote control in stead of the remote control.

- Changing the channels
- Turning the power on and off

### <One-click Connection> (See page 30)

You can connect to the projector by double-clicking or using drag-and-drop.

### <USB display function> (See page 47)

You can transfer video and audio by connecting the projector to a PC using a USB cable.

The restrictions of this software vary with the projector used. For the latest information, see the applicable projector model list in our website (<http://panasonic.net/avc/projector/>).

If there is the CD-ROM of this software in the accessory of the projector, see the “Applicable projector model list” in the application launcher in it.

#### Notes

- Some functions cannot be operated with the remote control attached to the projector, depending on the model. The <COMPUTER SEARCH> and <MULTI-LIVE> buttons can be operated from the menu of the projector. For details, see “‘PC Search’ Connection” (page 20) and “Live Mode” (page 34).
- USB display function is only available when the projector supports the USB display function.
- If you are connecting the USB cable for the first time, it is necessary to install the USB driver. For how to install the USB driver, see “Installing the USB driver” (page 48).

# Check your computer

---

## Necessary environment for computers to be connected

- First, check your computer to see whether or not it has a wired LAN\* or a built-in wireless LAN function.
  - ※LAN : “Glossary” (See pages 52 - 53)
- Before connecting the projector to the computer, be sure to check the following settings.
- Operation is not guaranteed for all wireless LAN adapters and built-in wireless LAN adapters.

### ■ Wireless LAN

#### Check 1 Wireless LAN settings

##### <Computer with a built-in wireless LAN function>

- Is your wireless LAN switched on?

##### <Computer without a built-in wireless LAN function>

- Is your wireless LAN adapter properly recognized?
- Is the wireless LAN adapter switched on?
- Install the wireless LAN adapter driver beforehand.

For details on how to install the driver, refer to the instructions accompanying the wireless card.

#### Check 2 Logon user's settings

- Have you logged in as the Administrator?

#### Check 3 Computer's settings

- When security (firewall) software and utilities for wireless LAN adapter are installed, these may prevent connection of the projector.

##### <Windows XP/Windows Vista/Windows 7>

- Is Network Bridge enabled? (See page 55)
- Has your firewall been disabled? (See page 56)

## Check your computer (cont.)

---

### ■ Wired LAN

#### Check 1

##### <For wired LAN>

- Is the cable properly connected?
- The specifications for cables vary depending on the system configurations. Confirm the projector settings and the cable specification.

#### Check 2 Wired LAN settings

##### <Computer with a built-in wired LAN function>

- Is your wired LAN switched on?

##### <Computer without a built-in wired LAN function>

- Is your wired LAN adapter properly recognized?
- Is your wired LAN adapter switched on?
- Install the wired LAN adapter driver beforehand.

For details on how to install the driver, refer to the instructions accompanying the wired LAN adapter.

# Installing/Uninstalling software

## System requirements

The computer must meet the following requirements in order to use the supplied software.

|                           |  |
|---------------------------|--|
| OS:                       | Microsoft Windows® XP Professional, Home Edition, Tablet PC Edition 2005<br>Windows Vista® Ultimate 32/64 bit, Business 32/64 bit, Home Premium 32/64 bit, Home Basic 32/64 bit<br>Windows® 7 Ultimate 32/64 bit, Professional 32/64 bit, Home Premium 32/64 bit |
| CPU:                      | Intel® Pentium® III 800 MHz or faster, or compatible processor<br>(1 GHz or faster is recommended when using live mode)  |
| RAM:                      | 256 MB or more   |
| Empty hard disk capacity: | 60 MB or more  |
| Hardware conditions:      | CD or DVD drive (for installing software and viewing the operation manual)<br>For connection by wired LAN: LAN terminal (10BASE-T/100BASE-TX/1000BASE-T) is necessary<br>For connection by wireless LAN: Wireless LAN adapter (IEEE802.11 b/g/n) is necessary    |
| WebBrowser:               | Internet Explorer® 6.0/7.0/8.0/9.0   |

### Notes

- Note that operation is not guaranteed when used with system environments other than the above or on homemade computers.
- Compatibility of Microsoft Windows® XP and Windows Vista®  
Microsoft Windows® XP: SP3 or before  
Microsoft Windows Vista®: SP1 or before  
Microsoft Windows® 7: SP1 or before
- Some functions may not be able to be used on a computer using a wireless WAN.
- When connecting with IEEE802.11n, connect in infrastructure mode using a wireless LAN adaptor, projector and access point, all of which are compatible with 11n.  
("Connecting through the access point" → See page 24)

## ■ Precautions when using Windows Vista/Windows 7

- The following limitation is applied to the projection of Launcher to the projector screen:
  - Software installed: Launcher is displayed.
  - Software not installed: When Windows Aero is engaged, the launcher is projected.  
When Windows Aero is disengaged, the launcher is not projected.
- When using a Windows Vista® or Windows® 7 computer, you must be logged in to an administrator account in order to use the secondary display transmission function.  
Note that this function cannot be used in some operating environments.
- When changing the graphic function with a personal computer having the Switchable Graphics function, stop the live operation.

**Operation is not guaranteed for all computers that meet the above conditions.**

### Note

The illustrations and screenshots in this manual may be different from those on your computer.

# Installing/Uninstalling software (cont.)

---

## ■ Installation procedure

### 1 How to install

#### ● When installing with the file downloaded from the web site

- Unpack the file downloaded from the web site. Double-click “Setup.exe” in the folder made by unpacking.
- “Install” and “Use without installing” are displayed.

#### ● When the CD-ROM of this software is attached to the projector

- Insert the CD-ROM of this software into the CD drive, and the application launcher starts automatically. If the launcher does not start, double-click [Launcher.exe] in the CD-ROM.
- Click [WIRELESS MANAGER 5.5].
- “Install” and “Use without installing” are displayed.

#### ● When the CD-ROM of this software is attached to the wireless module

- Insert the CD-ROM of this software into the CD drive, and the application launcher starts automatically. If the launcher does not start, double-click [Launcher.exe] in the CD-ROM.
- “Install” and “Use without installing” are displayed.

#### Notes

- For the latest version, download “Wireless Manager ME 5.5” from our website (<http://panasonic.net/avc/projector/>).
- If the automatic play screen appears, select “Run Launcher.exe”.

### 2 Click “Install” or “Use without installing”.

#### 2-1 If “Install” is selected

After the installer starts, follow the instructions appearing on the screen and install the software.

#### 2-2 If “Use without installing” is selected

“Start from CD-ROM” and “Copy to another media, then start” are displayed.

① When using immediately without copying, click “Start from CD-ROM”.

Wireless Manager ME 5.5 starts. You can operate as in the installation procedure.

When copying and then using, click “Copy to another media, then start”. The window to select a folder to save (copy) to opens. Only when this is selected, perform the following steps ② and ③.

② Select a folder to save to and click “OK”.

The program in the CD-ROM is copied to the folder to copy to.

③ Double-click the icon (WMStart.exe) of Wireless Manager ME 5.5 selected in step ② in the folder “WMme5.5” to save to.

Wireless Manager ME 5.5 starts. You can operate as in the installation procedure.

#### Notes

- If this software is used without being installed, the following functions are disabled.
  - Secondary display function
  - Function of outputting the image and sound together in the live mode.
  - The operation is slower than when the software is installed and used.
- If you are not the “Administrator” or a “GUEST”, use “U” (User) of the network No.
- When “Windows Security Alert” window is displayed during the software startup.
  - If you are logged on with “Administrator” rights, continue the operation by clicking on <Unblock> or <Allow access (A)> button.
  - If you are logged on with an account without “Administrator” rights, exit from this software once after clicking on the <OK>, <Unblock>, or <Allow access> button. Use this software after performing the deblocking of this software following the instructions from the computer administrator.
    - ※ When input of the administrator password is requested, perform the deblocking of this software following the instructions from the computer administrator.
- If the “Hardware Installation” screen is displayed when installing software, press the “Continue Anyway” button to complete the installation (See page 48).

## ■ Uninstallation procedure

On the desktop, select “Start”, “All programs”, “Panasonic Wireless Display”, and “Delete Wireless Manager mobile edition 5.5” in order. Follow the instructions appearing on the screen and uninstall the software.

# Connecting with wireless LAN

---

## Preparations

Make sure or prepare for the following items:

- ① The wireless LAN adapter is recognized. (See page 54)
  - The wireless LAN adapter you want to use is enabled. (Otherwise, enable it.)
  - Make sure the power supply for the wireless LAN adapter is turned on; the hardware switch or the software setting might have turned it off.
- ② When using it via the infrastructure connection: Make sure the network setting for the projector has been done by the administrator.
- ③ If you log in with [User authority], select a projector network number from [USER1] to [USER3].

## Easy Wireless Set Up

There are 3 different connection methods, “S-MAP” (Projector Signal Map) Connection, “1-4/U” Connection, and “PC Search” Connection.

These connections enable easy search and connection to the projector.

(Refer to “1-4/U” connection on page 19 to establish an easy wireless connection with projectors that have no S-MAP function.)

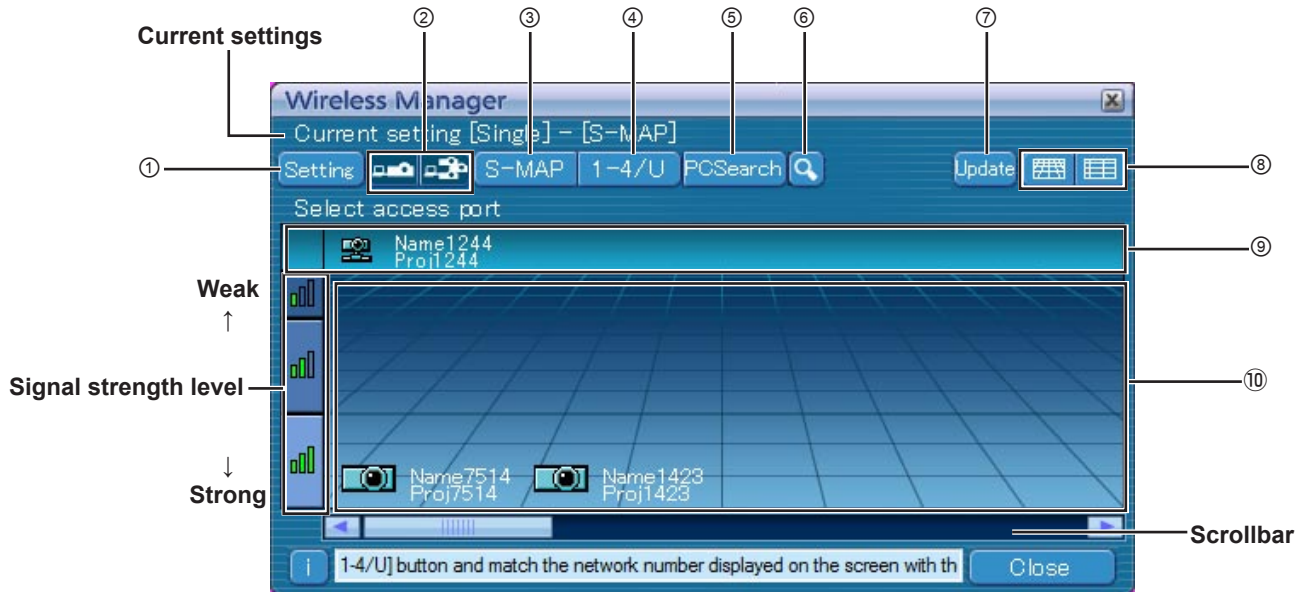
### 1 Turn on the power of the projector.

### 2 Connect to the projector with one of the connection methods.

- [S-MAP] Connection: Search and connect to the projectors set up using [Network Number] [S-MAP]. Connectable projectors are displayed in order of wireless reception strength. (See page 18). Operation is performed in [S-MAP] or [S-MAP] (list display) view on the <Projector Search> window.
- [1-4/U] Connection: Search and connect to the projectors set up using [Network Number] [1]-[4] or [USER1]-[USER3]. Projectors that can be connected to are displayed in a list (See page 19). Operation is performed in [1-4/U] view on the <Projector Search> window.
- [PC Search] Connection: Use the [Computer search] function on the projector to search and connect (See page 20).

## Parts name in search screen

### ■ <Projector Search> window – [S-MAP] (See page 18)



#### ① Setting menu display

Choose to display or hide the ② to ⑥ buttons

#### ② Access Devices (See pages 34, 40, 42)

When only one projector is connected, select [🏠]. When multiple projectors are connected, select [👤].

※ Multiple projectors [(Multiple projectors icon)] are available when “1-4/U” is selected.

#### ③ S-MAP (See page 18)

Display <Projector Search> window – [S-MAP].

#### ④ 1-4/U (See page 19)

Display <Projector Search> window – [1-4/U].

#### ⑤ PC Search (See page 20)

Display <PC Search> window.

#### ⑥ Other search (See page 29)

From the projectors that are currently switched on, search for the projector of specified IP address, domain name, and ID.

#### ⑦ Updates the list of found projectors.

#### ⑧ Switching Display Window

🏠: <Projector Search> window – [S-MAP] is displayed. (Upper figure)

👤: <Projector Search> window – [S-MAP] (list display) is displayed. (See page 16)

#### ⑨ Found projectors

- Projector found on a wired LAN
- Projector found using [U (user)]
- Projectors searched by a network number of 1 to 4.

#### ⑩ Projectors searched and found by S-MAP.

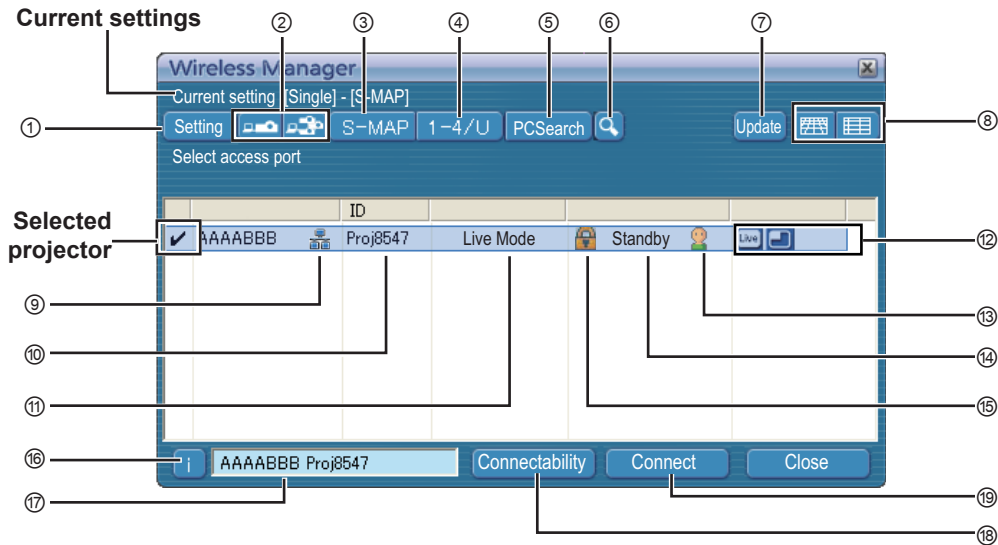
The name and ID of projectors are displayed.

🏠 was found on wired LAN.

👤 was found on wireless LAN.

# Connecting with wireless LAN (cont.)

## ■ <Projector Search> Window – [S-MAP] (List display) (See page 18)

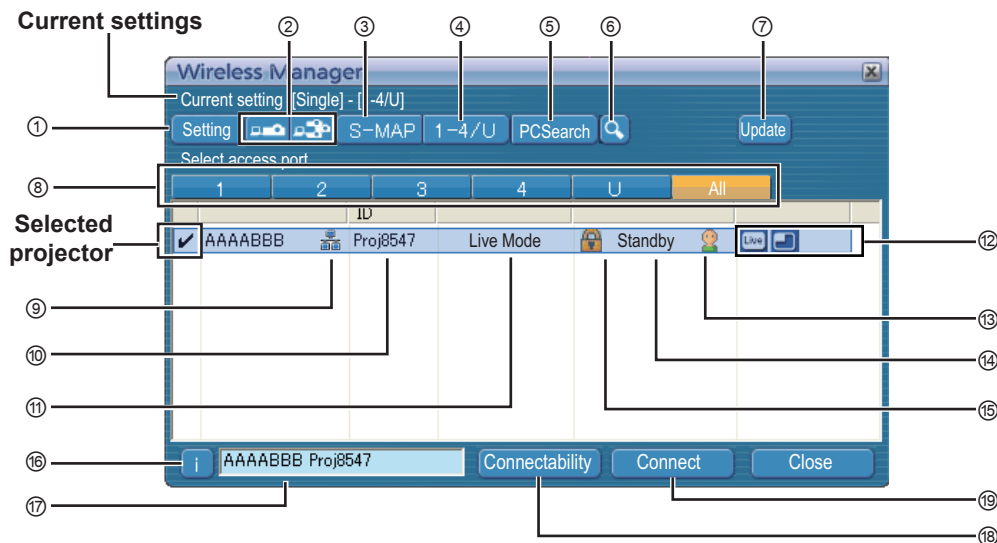


- ① **Setting menu display**  
Choose to display or hide the ② to ⑥ buttons
- ② **Access Devices** (See pages 34, 40, 42)  
When only one projector is connected, select [🏠]. When multiple projectors are connected, select [🏠].  
※ Multiple projectors [(Multiple projectors icon)] are available when “1-4/U” is selected.
- ③ **S-MAP** (See page 18)  
Display <Projector Search> window – [S-MAP].
- ④ **1-4/U** (See page 19)  
Display <Projector Search> window – [1-4/U].
- ⑤ **PC Search** (See page 20)  
Display <PC Search> window.
- ⑥ **Other search** (See page 29)  
From the projectors that are currently switched on, search for the projector of specified IP address, domain name, and ID. (From all network numbers except for [U (user)])
- ⑦ **Updates the list of found projectors.**
- ⑧ **Switching Display Window**  
[🏠] : <Projector Search> window – [S-MAP] is displayed. (See page 15)  
[🏠] : <Projector Search> window – [S-MAP] (list display) is displayed. (Upper figure)
- ⑨ **This mark appears for the projectors that have been searched and found through wired LAN.**
- ⑩ **ID** (See page 29)  
Display projector’s ID.
- ⑪ **Mode** (See page 34)  
Display projector’s mode or style.
- ⑫ **Available modes and functions**  
Unavailable modes/functions among [Live mode 🏠] and [Multi live mode 🏠] are displayed with [🏠] overlaid on them.
- ⑬ **The number of people connected to this projector**  
Display the number of people that are connected to this projector.
- ⑭ **The status of this projector**  
Display the projector’s connection status.
- ⑮ **[🔒] will be displayed when password is required for the connection.** (See page 29)
- ⑯ **Connection message**  
Blinks when connection is not possible. Click to display information on resolving the issue. (See page 22)
- ⑰ **The [Projector Name] of the selected projector and the name given in the favorites are displayed (See page 50).**  
Guides for the operating status and connection method etc are also displayed.
- ⑱ **Connectability**  
The name and ID of projectors are displayed on the upper left of the selected projector’s projection screen. Once it is confirmed as connectable, the message “Projector is available.” will appear on the PC screen.
- ⑲ **Connection**  
Connect to the selected projector.



# Connecting with wireless LAN (cont.)

## ■ <Projector Search> Window – [1-4/U] (See page 19)




- ① **Setting menu display**  
Choose to display or hide the ② to ⑥ buttons
- ② **Access Devices** (See pages 34, 40, 42)  
When only one projector is connected, select [🖨️]. When multiple projectors are connected, select [🖨️🖨️].  
※ Multiple projectors [(Multiple projectors icon)] are available when “1-4/U” is selected.
- ③ **S-MAP** (See page 18)  
Display <Projector Search> window – [S-MAP].
- ④ **1-4/U** (See page 19)  
Display <Projector Search> window – [1-4/U].
- ⑤ **PC Search** (See page 20)  
Display <PC Search> window.
- ⑥ **Other search** (See page 29)  
From the projectors that are currently switched on, search for the projector of specified IP address, domain name, and ID. (From all network numbers except for [U (user)])
- ⑦ **Update the connection status display**
- ⑧ **“Network” number**  
If you specify [1], [2], [3], [4], [U (user)]\*<sup>1</sup> or [Display all], the projector(s) assigned with the corresponding network number(s) will be displayed in [Projector name] field. The default value is [S-MAP]\*<sup>2</sup> for both PC and projector.
- ⑨ **This mark appears for the projectors that have been searched and found through wired LAN.**
- ⑩ **ID** (See page 29)  
Display projector’s ID.
- ⑪ **Mode** (See page 34)  
Display projector’s mode or style.
- ⑫ **Available modes and functions**  
Unavailable modes/functions among [Live mode 🖨️] and [Multi live mode 🖨️🖨️] are displayed with [🚫] overlaid on them.
- ⑬ **The number of people connected to this projector**  
Display the number of people that are connected to this projector.
- ⑭ **The status of this projector**  
Display the projector’s connection status.
- ⑮ **[🔒] will be displayed when password is required for the connection.** (See page 29)
- ⑯ **Connectability message**  
Blinks when connection is not possible. Click to display information on resolving the issue. (See page 22)
- ⑰ **The [Projector Name] of the selected projector and the name given in the favorites are displayed (See page 50).**  
Guides for the operating status and connection method etc are also displayed.
- ⑱ **Connectability**  
The name and ID of projectors are displayed on the upper left of the selected projector’s projection screen. Once it is confirmed as connectable, the message “Projector is available.” will appear on the PC screen.
- ⑲ **Connection**  
Connect to the selected projector.

※1  
 • In the following situations, connections other than [U (user)] are not possible.  
 - Not logged in with Administrator authority  
 • Depending on the computer and wireless LAN adapter used, Easy Wireless Set Up may not be possible. If this is the case, the [Network] number of <Projector Search> window automatically switches to [U (user)]. For details of the connection procedure, first close Wireless Manager ME 5.5, and then refer to pages 25 - 27.

※2  
 • The network number is [S-MAP], when Wireless Manager ME 5.5 starts. These numbers must match for the connection. To check the network number, refer to the network menu of the projector.  
 • When importance is placed on security, select the network number [2] - [4], because WEP (wireless communication encryption)\* is set on these network numbers.  
 • If [U (user)] is used for the network number, important video/audio data is protected because AES\* encryption processing takes place in advance for all network numbers, even though [ENCRYPTION] is set to [NONE].  
 • Other network adapters may not be usable under Easy Wireless Set Up connections.  
 • Connections to other networks connected through the wireless LAN adapter are broken under Easy Wireless Set Up connections.  
 ※ “Glossary” (See pages 52 - 53)

# Connecting with wireless LAN (cont.)

## “S-MAP” Connection

- 1 Click  on the desktop.  
Alternatively, select [Start] → [All Programs] → [Panasonic Wireless Display] → [Wireless Manager mobile edition 5.5].

<Projector Search> window – [S-MAP] is displayed. (Parts name → See page 15)

- When the <Input User Name> window appears

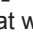

Set the icon and user name, and click [OK].




**Notes**

- The icon and user name are set when Wireless Manager mobile edition 5.5 is first launched.
- The icon and user name settings can be changed in the <Option> window. (See page 51)

- 2 Select and click the icon  of the projector you want to connect to.

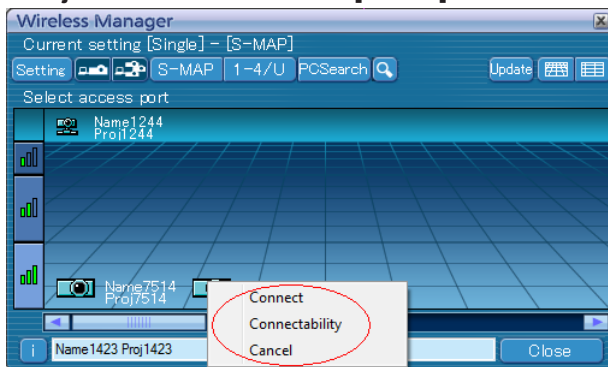
( represents the projectors that were searched and found through wired LAN, while  indicates those found through wireless LAN.)

The Connect/Connectability menu is displayed.

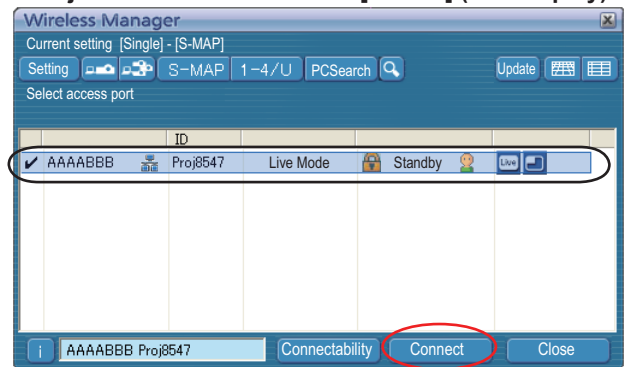
For List Display, [>] is displayed in the selected projector.

(In list view, select a projector you want to connect from the list and press [Connect].)

<Projector Search> Window – [S-MAP]



<Projector Search> Window – [S-MAP] (List display)



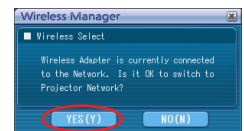
- 3 Select and click [Connect].

- If the <Confirmation Dialog> box is displayed

Click [Yes(Y)].

**Notes**

- For details on how to connect, refer to page 51.
- If you want to enable the network adapter after starting the Wireless Manager, you should do it after exiting the Wireless Manager.



- 4 Connection completed.

When the connection with the projector is established, the launcher appears. (“Description of the launcher”→ See page 32)




**Notes**

- The “Signal strength level” is just a guide. As differences occur due to conditions such as the communication environment, this does not always display accurate values.
- Enter the user name in up to 8 alphanumeric characters.
- The launcher is not projected on the projector. However, if you are using Windows Vista or Windows 7, the installed launcher is projected.
- If you cannot connect the projector and computer using Easy Wireless Setup (See page 54).
- If you do not find a projector you want to connect, press [Update] button.
- When a firewall is active, a window may open prompting to deactivate a network block. (See screen ① on page 57.)
- When a network connection is established by using the connection utility, a window may open prompting to halt the connection utility. (See screen ② on page 58.)
- The number of the letters of the projector name of [Connect]displayed on the search screen is limited to eight. Only the eight letters of the set projector name are displayed, depending on the projector model. It is recommended to limit the number of the letters of the projector name to eight for identification.

# Connecting with wireless LAN (cont.)

## “1-4/U” Connection

**1** Click  on the desktop, or select [Start] → [All Programs] → [Panasonic Wireless Display] → [Wireless Manager mobile edition 5.5].

<Projector Search> window – [S-MAP] is displayed.

• **When the <Input User Name> window appears**

Set the icon and user name, and click [OK].

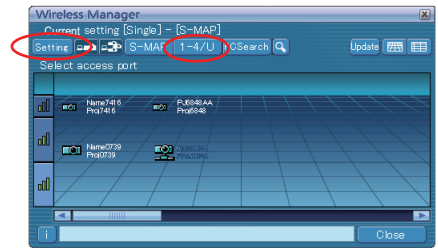


**Notes**

- The icon and user name are set when Wireless Manager ME 5.5 is first launched.
- The icon and user name settings can be changed in the <Option> window. (See page 51)

**2** Click [1-4/U] from the setting menu.

If the setting menu is not displayed, click [Setting].

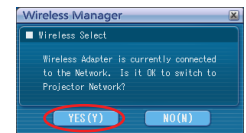


• **When the <Confirmation dialog> box appears**

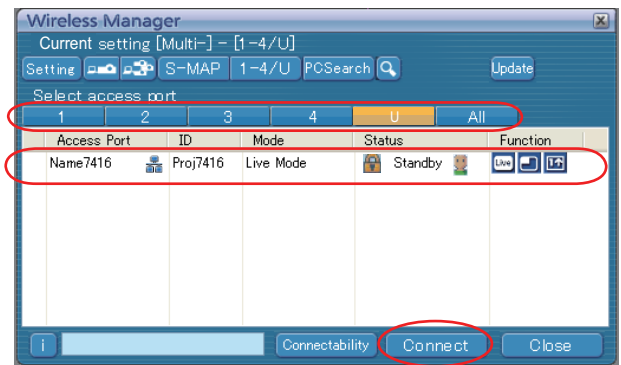
Click [YES (Y)].

**Note**

If you want to enable the network adapter after starting the Wireless Manager, you should do it after exiting the Wireless Manager.



**3** A list of projectors that can be connected to are displayed in the <Projector Search> window – [1-4/U].



**4** Select the same Network number as the [Network number] for the projector you want to connect to.

The projectors that can be connected to are displayed.

**5** Select the desired projectors, and click [Connect].

The launcher appears and the connection with the projector is established.

(“Description of the launcher” → See page 32)




**Notes**

- Enter the user name in up to 8 alphanumerics.
- The launcher is not projected on the projector. However, if you are using Windows Vista or Windows 7, the installed launcher is projected.
- If you cannot connect the projector and the computer using Easy Wireless Setup (See page 54).
- If you do not find a projector you want to connect, press [Update] button.
- You can search through all the network numbers from 1 through 4, if you select [All].
- When a firewall is active, a window may open prompting to deactivate a network block. (See screen ① on page 57.)
- When a network connection is established by using the connection utility, a window may open prompting to halt the connection utility. (See screen ② on page 58.)
- The number of the letters of the projector name of [Connect] displayed on the search screen is limited to eight. Only the eight letters of the set projector name are displayed, depending on the projector model. It is recommended to limit the number of the letters of the projector name to eight for identification.

# Connecting with wireless LAN (cont.)

## “PC Search” Connection

- 1 Click  on the desktop, or select [Start] → [All Programs] → [Panasonic Wireless Display] → [Wireless Manager mobile edition 5.5].

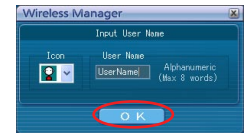
<Projector Search> window – [S-MAP] is displayed.

- When the <Input User Name> window appears

Set the icon and user name, and click [OK].

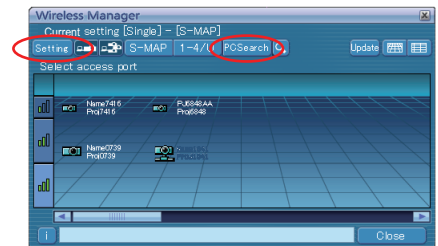
**Notes**

- The icon and user name are set when Wireless Manager ME 5.5 is first launched.
- The icon and user name settings can be changed in the <Option> window. (See page 51)



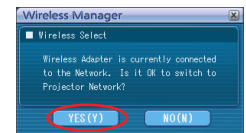
- 2 Click [PC Search] from the setting menu.

If the setting menu is not displayed, click [Setting ▶].



- When the <Confirmation dialog> box appears

Click [YES (Y)].



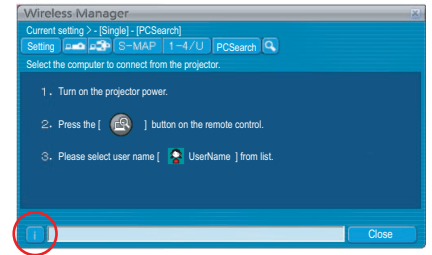
**Notes**

- Enter the user name in up to 8 alphanumeric.
- If you want to enable the network adapter after starting the Wireless Manager, you should do it after exiting Wireless Manager.
- When a firewall is active, a window may open prompting to deactivate a network block. (See screen ① on page 57.)
- When a network connection is established by using the connection utility, a window may open prompting to halt the connection utility. (See screen ② on page 58.)

## Connecting with wireless LAN (cont.)

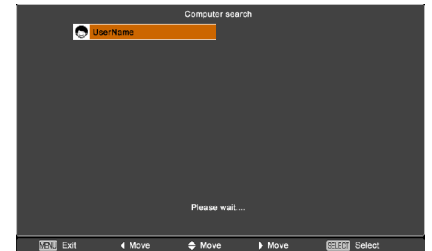
### 3 Connect the projector and computer.

<PC Search> window appears.



#### ■ Operations on the projector

- ① Turn on the power to the projector unit.
- ② Select [COMPUTER SEARCH] from the Network menu of the projector and press the <ENTER> button.  
The computers that can be connected to the projector are displayed in a list.
- ③ Select from the list displayed on the projector an item with the same icon/ user name as is displayed on the computer <PC Search> screen.



#### Notes

- The restrictions of this software vary with the projector used.  
For the latest information, see the applicable projector model list in our website (<http://panasonic.net/avc/projector/>). If there is the CD-ROM of this software in the accessory of the projector, see the “Applicable projector model list” in the application launcher in it.
- <COMPUTER SEARCH> button may not be on the remote control supplied with the projector depending on the model.  
If you cannot operate from the remote control, operate from the “Network” menu of the projector.

### 4 Connection completed.

When the connection with the projector is established, the launcher appears.  
 (“Description of the launcher” → See page 32)



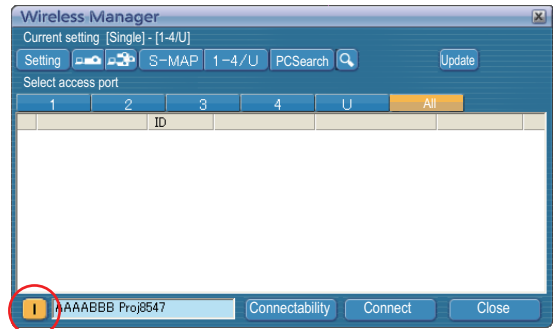
#### Note

The launcher is not projected on the projector.  
However, if you are using Windows Vista or Windows 7, the installed launcher is projected.

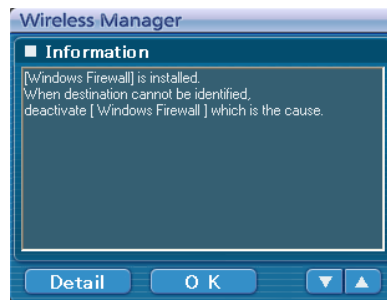
# Connecting with wireless LAN (cont.)

## Connection error messages

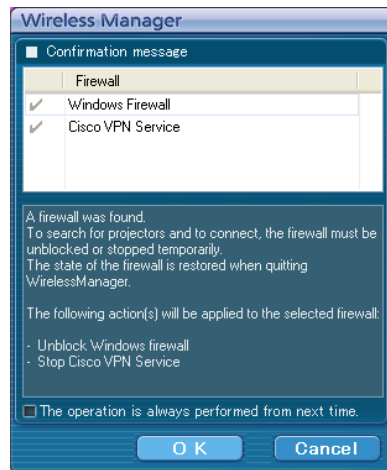
If wireless LAN is not available, [i] will blink in lower left corner of the <Projector Search> window ([S-MAP] or [1-4/U]).



Click the [i] button at this time to display information on resolving the issue.



Click the [Detail] button to display detailed information. Note that the [Detail] button is available only when the Firewall/Connection Utility is found active. To perform the selected Firewall/Connection Utility process every time, check [The operation is always performed from next time.]. This message will no longer be displayed from the next time the software is launched. If you want to display the message when the software is launched, check the corresponding item of <Firewall/Wireless LAN Utility Message> on the [Other2] tab of [Option]. (See page 51)



The displayed information is as follows.

| Detected issue                           | Displayed information  | Remarks   | Reference page |
|--|--|---|----------------|
| A firewall or network bridge is detected | [****]* is installed. When destination cannot be identified, deactivate [****] which is the cause. | <ul style="list-style-type: none"> <li>• Has your firewall in Windows XP been disabled?</li> <li>• Is Wireless Manager mobile edition 5.5 registered in [Exceptions] ([Control Panel] → [Security Center] → [Windows firewall]) with the Windows XP?</li> <li>• Is this software registered in the [Exceptions] tab in [Control Panel] – [Windows Firewall] – [Allow program through Windows firewall] in Windows Vista?</li> <li>• If application software with firewall function is installed, uninstall the software or turn off the firewall function.</li> <li>• If you do not expect ever to use Network Bridge and see no need for it, delete it from your system.</li> <li>• Is this software registered in [Start] → [Control Panel] → [System and Security] → [Allow a program through Windows Firewall] in Windows 7?</li> </ul> | P.55 - P.58    |

\* “Windows Firewall”, “Network Bridge” and other security software found will appear in [\*\*\*\*].

## Connecting with wireless LAN (cont.)

| Detected issue  | Displayed information   | Remarks  | Reference page |
|---|---|--|----------------|
| When a change in the settings made by the utility has been detected | The settings of Wireless Network connection have been changed.<br>When a Wireless LAN adapter utility or any other utilities are active, stop the operation of such utilities, then restart the Wireless Manager ME 5.5.  | The wireless LAN adapter utility used by the computer may have changed the wireless settings. Close the utility, and then make the connection again using Easy Wireless Set Up connection.   | —              |
| When a setting error for the wireless LAN adapter has been detected | No response from the wireless LAN adapter.<br><ul style="list-style-type: none"> <li>• Wireless LAN adapter conditions</li> <li>• Driver version (Latest)</li> </ul>  | <ul style="list-style-type: none"> <li>• Is the wireless LAN adapter effective?</li> <li>• Is your wireless LAN adapter properly recognized?</li> <li>• Some wireless LAN adapters may allow Easy Wireless Set Up connections to function if drivers are updated.</li> </ul>   | P.54           |
| When the user does not have the administrator authority             | You are logged in to an account that does not have administrator authority. Connect to the network, and then start Wireless Manager.<br>To connect to the network, the network settings (IP address and other settings) of the computer need to be set in advance from an account that has administrator authority.   | If you have logged in as a user that does not have administrator permission or as [GUEST], you cannot use easy wireless setup [S-MAP]/network numbers [1]-[4].<br>If you must perform Easy Wireless Set Up without administrator authority, designate [U (user)] as the network number.  | P.25           |
| Issues other than the above   | Please perform the following checks, when the projector cannot be found.<br>[Projector setup]<br>(1) Is the power on for the projector?<br>(2) Is the Network capability on?<br>(3) Has the network channel number correctly been set up?<br>[Computer setup]<br>(1) Is Wireless capability on?<br>(2) Is the Firewall application causing a network block?<br>(3) Is wireless enabled? | <ul style="list-style-type: none"> <li>• Is the power of the projector on?</li> <li>• Is the network capability of the projector ON?</li> <li>• Do the network settings of the projector and the network of Wireless Manager ME 5.5 match?</li> <li>• Is the wireless capability of the computer ON?</li> <li>• Is communication being blocked by a Firewall application installed on the computer?</li> <li>• Is wireless/wired enabled?</li> </ul> | —              |

# Connecting with wireless LAN (cont.)

## Connecting through the access point

You can make the setting for infrastructure mode\* (connection through the access point\*); however, confirm to your system administrator on network settings before changing any settings.

※“Glossary” (See pages 52 - 53)

### ① Projector settings

- 1 Turn on the projector and press the [NETWORK] button on the remote control.**
- 2 Press the menu button to open the [NETWORK] menu, and then select from among [USER 1] through [USER 3] for [WIRELESS LAN] and press [ENTER].**
- 3 Set the details of network and select [OK].**  
Confirm to your system administrator on network settings before changing any settings.

#### Note

The projector's MAC address\* can be checked with [STATUS] in the network menu of the projector unit.

※“Glossary” (See pages 52 - 53)

### ② Computer settings

- 4 Turn on the computer.**
- 5 Make the network setting according to your system administrator.**
- 6 Connect to your access point.**
- 7 Start Wireless Manager ME 5.5.**
- 8 Select a projector you want to connect on the <Projector Search> window ([S-MAP] or [1-4/U]), and click [Connect]. (See pages 18, 19)**

The launcher appears and the connection with the projector is established.

(“Description of the launcher” → See page 32)

#### Note

If no projector is displayed, click [] to start searching by IP address. (See page 29)

#### Note

If you cannot establish wireless LAN connection via an access point after performed the right steps described in “① Setting projector”, contact the manufacturer of your access point (i.e. radio relay device).



# Connecting with wireless LAN (cont.)

## When logging on without administrator authority

### ① Projector settings

- 1** Turn on the projector and press the [NETWORK] button on the remote control.
- 2** Press the menu button to open the [NETWORK] menu, and then select from among [USER 1] through [USER 3] for [WIRELESS LAN] and press [ENTER].
- 3** In wireless LAN detailed setting, set [SSID\*], [DHCP\*], [IP ADDRESS\*], [SUBNETMASK\*], [DEFAULT GATEWAY\*], [Mode], [AUTHENTICATION], [ENCRYPTION], and [CHANNEL].

For details, see the operation manual for your projector.

※“Glossary” (See pages 52 - 53)

#### Notes

- Wireless LAN and wired LAN cannot be used in the same segment.
- When multiple devices are connected, a unique IP address must be allocated to each device.
- SSID has to be entered in lower-case alphanumeric letters.
- You cannot set “any” or “ANY” for SSID.
- The following settings are set before the projector leaves the factory.

|                 |                     |
|-----------------|---------------------|
| SSID            | Panasonic Projector |
| DHCP            | OFF                 |
| IP ADDRESS      | 192.168.11.100      |
| SUBNETMASK      | 255.255.255.0       |
| DEFAULT GATEWAY | 192.168.11.1        |
| MODE            | AD.HOC              |
| AUTHENTICATION  | OPEN                |
| ENCRYPTION      | NONE                |
| CHANNEL         | 11                  |

# Connecting with wireless LAN (cont.)

## ② Computer operation (For Windows XP)

### 4 Make the network setting according to your system administrator.

If the projector settings are the default settings, then the computer can be used with the following network settings.

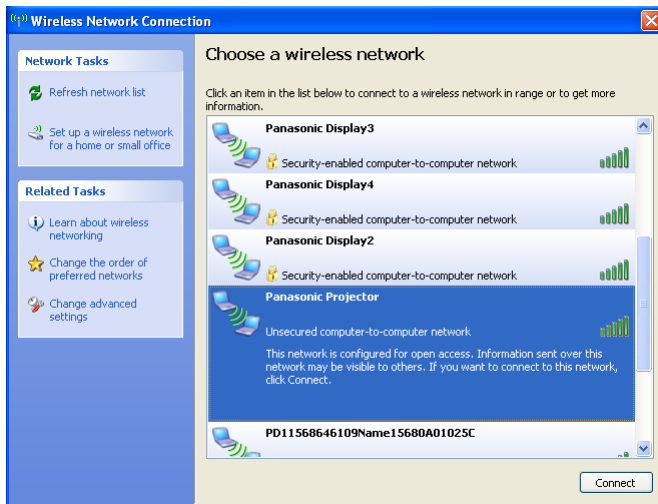
|                 |                |
|-----------------|----------------|
| IP ADDRESS      | 192.168.11.101 |
| SUBNETMASK      | 255.255.255.0  |
| DEFAULT GATEWAY | 192.168.11.1   |

### 5 Log on with the user who operates Wireless Manager ME 5.5.

### 6 Click [Start], [Network Connections], [Wireless Network Connection] and select the wireless network for which you have specified [SSID] in step 3, and then click [Connect].

<Example>

When using Windows [Wireless Network Connection] to connect with the projector whose [SSID] is [Panasonic Projector]

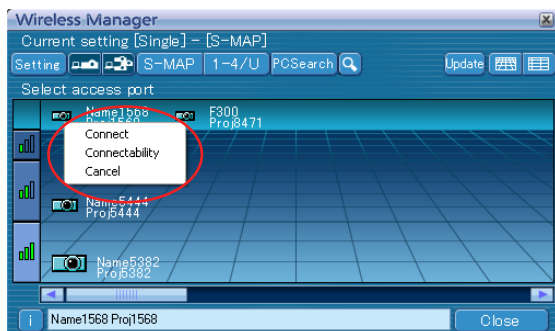


#### Note

If you use any wireless utility other than Windows [Wireless Network Connection], follow its operation procedure for connection.

### 7 Start Wireless Manager ME 5.5

### 8 Select a projector you want to connect on the <Projector Search> Window ([S-MAP] or [1-4/U]), and click [Connect]. (See pages 18, 19)



- For information on how to confirm the projector you want to connect, refer to [Search by ID] in [Other search] section on page 29.
- The launcher appears and the connection with the projector is established. (“Description of the launcher” → See page 32)

# Connecting with wireless LAN (cont.)

## ② Computer operation (For Windows Vista)

### 4 Make the network setting according to your system administrator.

If the projector settings are the default settings, then the computer can be used with the following network settings.

|                 |                |
|-----------------|----------------|
| IP ADDRESS      | 192.168.11.101 |
| SUBNETMASK      | 255.255.255.0  |
| DEFAULT GATEWAY | 192.168.11.1   |

### 5 Log on with the user who operates Wireless Manager ME 5.5.

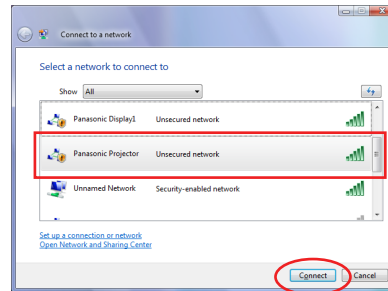
### 6 Click [Start] and [Connection], and select the wireless network for which you have specified [SSID] in step 3, and then click [Connect].

<Example>

When using Windows [Network Connection] to connect with the projector whose [SSID] is [Panasonic Projector]

**Note**

If you use any wireless utility other than Windows [Wireless Network Connection], follow its operation procedure for connection.



### 7 Start Wireless Manager ME 5.5.

### 8 Select a projector you want to connect on the <Projector Search> Window ([S-MAP] or [1-4/U]), and click [Connect]. (See pages 18, 19)

For information on how to connect with projectors, refer to item 8 in [② Computer operation (For Windows XP)] section. (See page 26)

## ② Computer operation (For Windows 7)

### 4 Make the network setting according to your system administrator.

If the projector settings are the default settings, then the computer can be used with the following network settings.

|                 |                |
|-----------------|----------------|
| IP ADDRESS      | 192.168.11.101 |
| SUBNETMASK      | 255.255.255.0  |
| DEFAULT GATEWAY | 192.168.11.1   |

### 5 Log on with the user who operates Wireless Manager ME 5.5.

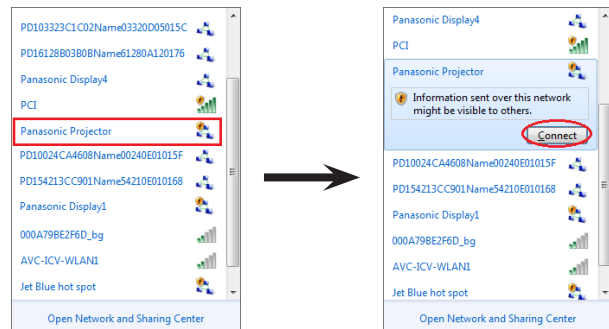
### 6 Click [Start] and [Connection], and select the wireless network for which you have specified [SSID] in step 3, and then click [Connect].

<Example>

When using Windows [Open Network and Sharing Center] to connect with the projector whose [SSID] is [Panasonic Projector]

**Note**

If you use any wireless utility other than Windows [Wireless Network Connection], follow its operation procedure for connection.



### 7 Start Wireless Manager ME 5.5.

### 8 Select a projector you want to connect on the <Projector Search> Window ([S-MAP] or [1-4/U]), and click [Connect]. (See pages 18, 19)

For information on how to connect with projectors, refer to item 8 in [② Computer operation (For Windows XP)] section. (See page 26)

# Connecting with Wired LAN

Connection can be made with wired LAN. However, confirm to your system administrator on network settings before changing any settings.

## ① Projector settings

- 1 Turn on the projector and press the [NETWORK] button on the remote control.**
- 2 Press the menu button to open the [NETWORK] menu, and then select [WIRED LAN] and press [ENTER].**
- 3 In wired LAN detailed setting, set [DHCP\*], [IP ADDRESS\*], [SUBNETMASK\*], and [DEFAULT GATEWAY\*].**

For details, see the operation manual for your projector.

※“Glossary” (See pages 52 - 53)

### Notes

- Wireless LAN and wired LAN cannot be used in the same segment.
- When multiple devices are connected, a unique IP address must be allocated to each device.
- The following wired LAN settings are set before the projector leaves the factory.

|                 |                |
|-----------------|----------------|
| DHCP            | OFF            |
| IP ADDRESS      | 192.168.10.100 |
| SUBNETMASK      | 255.255.255.0  |
| DEFAULT GATEWAY | 192.168.10.1   |

## ② Computer settings

- 4 Turn on the computer.**
- 5 Make the network setting according to your system administrator.**

If the projector settings are the default settings, then the computer can be used with the following network settings.

|                 |                |
|-----------------|----------------|
| IP ADDRESS      | 192.168.10.101 |
| SUBNETMASK      | 255.255.255.0  |
| DEFAULT GATEWAY | 192.168.10.1   |

- 6 Launch Wireless Manager ME 5.5.**
- 7 Select a projector you want to connect on the <Projector Search> window ([S-MAP] or [1-4/U]), and click [Connect]. (See pages 18, 19)**

When the connection with the projector is established, the launcher appears.

(“Description of the launcher” → See page 32)

### Note

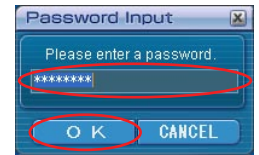
If no projector is displayed, click  to start searching by IP address. (See page 29)

# Other operations for connection

## Operations when password entry is required for connection

A  mark is displayed for projectors that have passwords set.

The window shown to the right appears to establish a connection. Enter the password for the projector and click [OK].



### Notes


- Click [CANCEL] at the <Password Input> window to return to launcher canceling the connection. (See page 32)
- When an incorrect password is entered, an error message appears.  
Click [OK] to return to the <Password Input> window and enter the correct password again.

## Other search

Apart from “Easy Wireless Set Up” (See page 14), there are 3 other ways to search for and connect to a projector, namely “Search by IP address”, “Search by domain name”, and “Search by ID”.

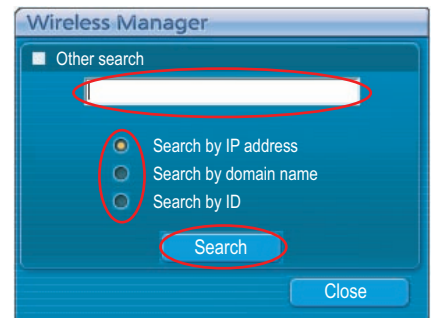
These methods can be used if you cannot search using “Easy Wireless Set Up”.

- Search by IP address Search for and connect to a projector from the IP address\*.  
The projector that you want to connect to must have a network number of [USER1]-[USER3] and must have the IP address set.
- Search by domain name Search for and connect to a projector from the domain name\*.  
The projector that you want to connect to must have a network number of [USER1]-[USER3] and must have the IP address set.  
※ “Glossary” (See pages 52 - 53)
- Search by ID Even if there are two or more projectors with the same name, an ID ([Proj] + 4-digit number) is assigned to each projector to enable the projectors to be identified.  
A search for the projector of the specified ID is carried out from among the projectors that are presently switched on, from all network numbers other than [USER1]-[USER3].  
It is necessary to know ID in advance. When input selection is switched to [NETWORK] on a projector, the ID appears on the upper right of the projection screen for approximately 5 seconds. If you write down the ID displayed in the [ID] column of the <Projector Search> window in advance, you can search a projector by the ID from next time.

**1** Click  at the <Projector Search> window.  
<Other search> window appears.

**2** Enter the information of the projector you want to search for, and select the search criteria.

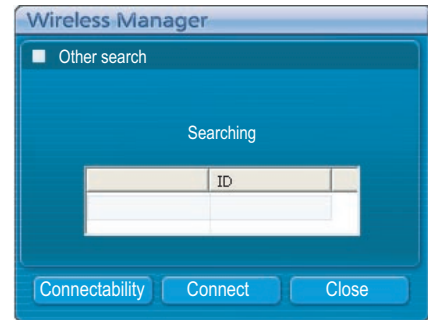
- When using “Search by IP address”
  - ① Enter the IP address (including its periods).  
Example: 192.168.10.100
  - ② Select [Search by IP address]
- When using “Search by domain name”
  - ① Enter the domain name.
  - ② Select [Search by domain name].
- When using “Search by ID”
  - ① Enter the ID.
  - ② Select [Search by ID].



## Other operations for connection (cont.)

### 3 Click [Search].

When <Other search> window – [Searching] is displayed, the search starts.

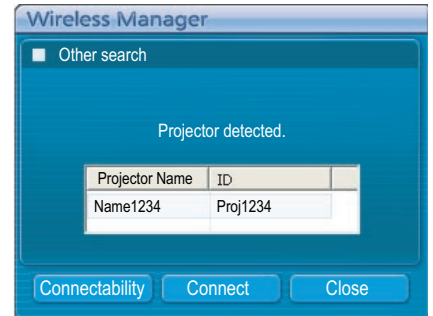


### 4 Check the search results.

When the projector of the applicable ID is found, the [Projector Name] and [ID] appear.

#### Note

If a projector of the applicable ID is not found, [No Projector detected.] appear.



### 5 Click [Connect].

When the connection with the projector is established, the launcher is displayed.

("Description of the launcher" → See page 32)

#### Note

The launcher is not projected by the projector.

However, if you are using Windows Vista or Windows 7, the installed launcher is projected.



## Automatic connection by "One-click connection"

An automatic connection can be established using the created profile.

This function is called "One click connection." (Create a profile → See page 31)

### 1 Turn on the power of the projector.

### 2 Connect with a created profile.

Perform step ① or ②.

① Double-click the profile.

(This function cannot be used when using without installation.)

② Drag and drop the profile to the [ ] on the desktop.

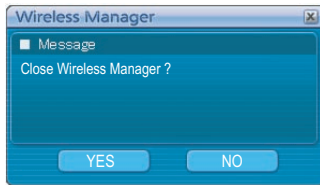
The computer connect to the projector that was connected when the profile was created.

## Other operations for connection (cont.)

### Exit Wireless Manager

#### 1 Click [X] on the launcher.

The following window appears.



#### ■ When connecting the projector for the first time

The <Preservation of a Profile> window appears.

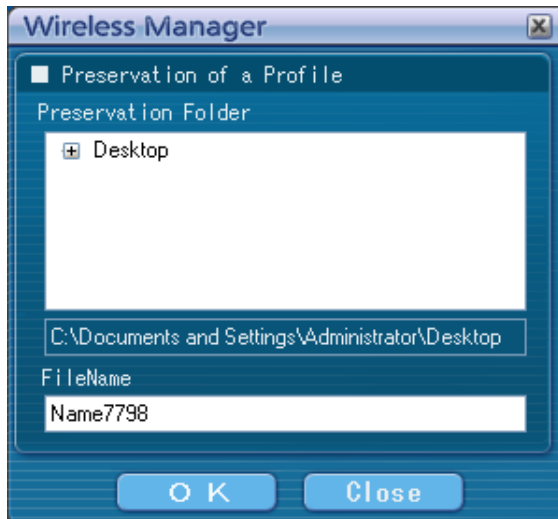
Create a profile with information about connected projectors.

You can use the created profile to connect automatically.

This function is called "One-click Connection". (One-click Connection → See page 30)

Set the save destination and file name, and click [OK].

If you do not need to create a profile, click [Close].




#### 2 Click [Yes].

The computer returns to the original network settings when the connection is ended.

However, note that some time may be needed to return to the original network settings.

Click [No] to return to the launcher.



#### Notes

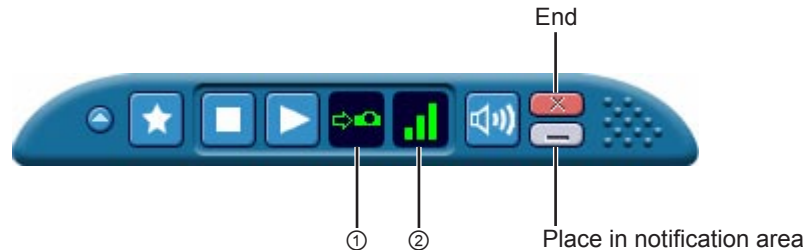
- When the launcher is minimized, right click  on the notification area to display pop up menu and click [End].
- You can also exit by selecting [End] from the launcher menu.

# Various projection methods

## Description of the launcher

The launcher always appears on the computer screen, and can be used to perform various operations.

- If the launcher has been minimized to the task tray, right click the  icon to display the launcher menu and operate the launcher.
- To return the launcher from the task tray, double-click the  icon, or select "Display menu bar" from the menu.
- The launcher can be dragged to any position in the screen.








### ■ Status indication

- ① **Status:** Indicate the connecting status.






When the cursor is moved to the launcher, the names, IDs, and statuses of the connected projectors are displayed in a pop up window.

```
Sendable
Projector Name : [ ID ] : Status
Name1423      : [Proj1423] : OK
```

When connected to one projector

-  (Green, lit): Transmission possible
-  (Blue, lit): Own computer currently transmitting (when in live mode)
-  (Yellow, lit): Other user currently transmitting
-  (Red, lit): Communication impossible
-  (Black, lit): When the projector has not been selected

When connected to multiple projectors

-  (Green, lit): All transmission possible
-  (Blue, lit): Currently Transmitting
-  (Yellow, lit): Communication impossible for more than one unit
-  (Red, lit): All communication impossible
-  (Black, lit): When the projector has not been selected

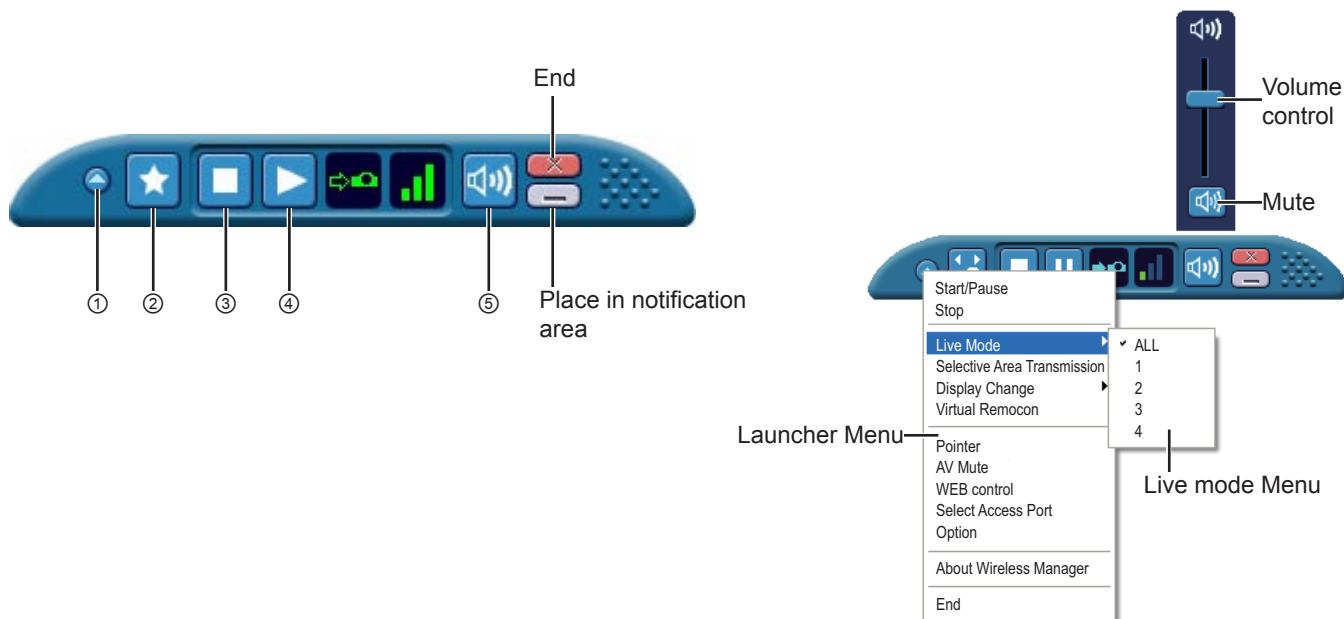
- ② **Reception strength level:** Displays the strength level condition of the reception. The more bars displayed, the stronger the reception and the better the communication environment.

### Notes

- The display configuration (direction) of the launcher may vary depending on the locations on the screen.
- The reception strength level may not be displayed correctly depending on the computer you are using.
- When a projector with a Memory Viewer function is connected, the status indication will light in yellow while the Memory Viewer is operating and you will not be able to start projection. To start projection, first close the Memory Viewer.



## Various projection methods (cont.)



### ■ Operating Button

- ① **Launcher menu button:** The launcher menu will appear. You can operate it by clicking the various items.
- [Start/Pause]: Starts/pauses projecting.
- [Stop]: Stops projecting.
- [Live Mode]: The live mode menu will appear. Set a projection position for live mode. (See pages 34 - 35)
- [Selective Area Transmission]: By using the selective area window, you can specify the necessary information alone from the computer screen, and display it on the projection screen. (See page 44)
- [Display Change]: You can set the computer screen and projector screen to the multi-monitor mode, and use the computer screen as the primary monitor and projector screen as a secondary monitor. (See page 45)
- [Virtual Remocon]: The projector remote control is displayed on the computer screen, where it can be operated.



- [Pointer]: Switches the pointer shape on the projected screen. (See page 46)
- [AV Mute]: Temporarily mutes the projector screen and volume. (See page 46)
- [WEB control]: Control a projector through the WebBrowser of a computer. For details, refer to the "Operating Instructions" of the projector, or "Network Operations".
- [Select Access Port]: The <Projector Search> window ([S-MAP], [1-4/U], [PC search]) appears. (See pages 18, 19, 20)
- [Option]: Displays the <Option> window. (See page 49)
- [About Wireless Manager]: The version information on Wireless Manager ME 5.5 appears.
- [Display Menu Bar]: Displays the launcher menu. (When minimized into the task tray.)
- ② **Favorite function button:** You can set the function you use frequently to this button. (See page 51)
- ③ **Stop projection button:** Stops projecting.
- ④ **Projection start button:** Starts projection. During transmission, the display changes to [⏸] (paused).
- ⑤ **Volume Adjust Button:** The volume control slider and mute button are displayed. Click again to close.

#### Notes

- For the projectors equipped with the 2 screen function, it can be used by means of the virtual remote control.
- If your projector does not have the index function, the index window does not operate.

## Various projection methods (cont.)

### Live Mode

Connect a computer to a projector, and display the computer screen over the entire projection screen.  
(If the connection is completed, and input is via network.)

#### 1 Press the [MULTI-LIVE] button on the remote control to turn the projection screen into a full screen display (the status when no index window (small screens) is displayed). (See page 35)

If you press the [MULTI-LIVE] button once or twice when index windows are displayed on the projection screen, the screen will switch over to a full screen display.

##### Operation with projector

You can also change by selecting [MULTI-LIVE] from the “Network” menu of the projector and pressing the <ENTER> button.

##### Notes

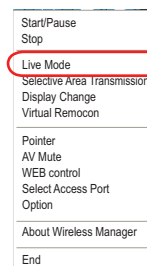
- Full screen mode is not available in live mode when an index window is displayed.
- <MULTI-LIVE> button may not be on the remote control supplied with the projector depending on the model. If you cannot operate from the remote control, operate from the “Network” menu of the projector.

#### 2 Check the status indication on the launcher to make sure that transmission is possible ( ). (See page 32)

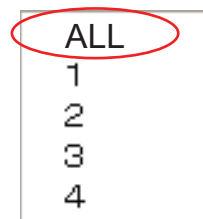
#### 3 Click .

The launcher menu will appear.

#### 4 Click [Live Mode] in the launcher menu.



#### 5 Click [All].



#### 6 Click on the launcher.

The current computer screen is transmitted to the selected projector. In the live mode the projector is occupied by a single computer, so operations from other computers are not possible.

##### Notes

- Picture quality or other options can be set on the <Option> window by clicking [Option] in the launcher menu. (See page 49)
- For presentations in live mode, the [PAGE ▲ ▼] buttons on the remote control will function in the same way as the computer's Page Up and Page Down keys. (The buttons correspond to Back space key and Space key only for “Presenter mode” of Microsoft Office PowerPoint (hereinafter called PowerPoint).) You can switch the presentation screen using the remote-controller, if an application program is active on the PC that supports the Page Up/Page Down keys.
- Some portions of images are not projected under some applications (Microsoft Office Assistant, IME Bar, animation and locus of the mouse cursor, and others).
- If the connection error occurs during projection, the message [“Live mode” is deactivated] will appear. Check the communication environment, then restart projection by clicking launcher buttons.
- Set the [LIVE MODE CUT IN] of the projector to [ON] in advance to enable a different computer to interrupt and project images in live mode.

### ■ Quitting live mode

Click  on the launcher.

# Various projection methods (cont.)

## Multi Live Mode

### Switching from one style to another

Multi live mode has “4-screen multi style”, “4-screen index style” and “16-screen index style”.

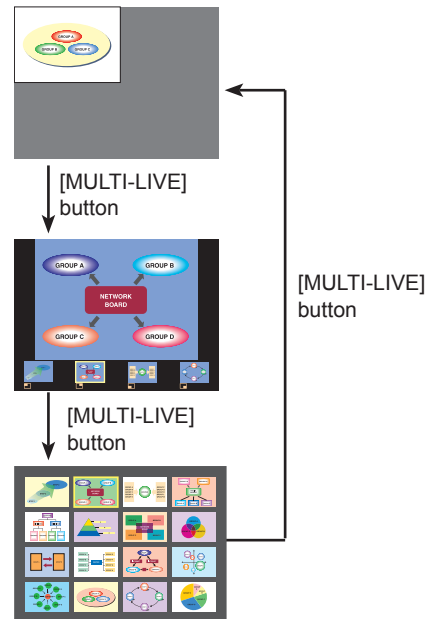
#### How to operate

Press the [MULTI-LIVE] button of the remote control to change the style.

#### Operation with projector

You can also change by selecting [MULTI-LIVE] from the “Network” menu of the projector and pressing the <ENTER> button.

- 4-screen multi style (See page 36)  
Set the projector to a full screen display. Assign an area of one quarter of the projector screen to each of up to four computers, and project images on the projector screen.
- 4-screen index style (See page 37)  
Display the indexes (small screens) of up to four computer screens, and make one of these screens an enlarged display. You can also temporarily switch over to a full screen display.
- 16-screen index style (See page 39)  
Display the indexes of up to 16 computer screens. You can also temporarily switch over one of these screens to a full screen display.



#### Notes

- When the projector starts up, it resumes in the current style the last time the projector was turned off.
- When transferring to the Live mode, first select the 4-screen multi style, and then click [▶] on the computer.
- If you switch over to a 4-screen multi style when five or more computers are connected in a 16-screen index style, the connections to the fifth and higher numbered computers will be nullified.
- You cannot use the “MULTI-LIVE” button on the remote control when in full screen display.
- <MULTI-LIVE> button may not be on the remote control supplied with the projector depending on the model. If you cannot operate from the remote control, operate from the “Network” menu of the projector.

# Various projection methods (cont.)

## 4-screen multi style

Connect up to four computers to one projector, and then divide the projector screen into four parts, and simultaneously display the screens for the four computers on the projector screen. (If the connection is completed, and input is via network.)

- 1 Press the [MULTI-LIVE] button on the remote control to turn the projection screen into a full screen display (the status when no index window (small screens) is displayed). (See page 35)**

If you press the [MULTI-LIVE] button once or twice when index windows are displayed on the projection screen, the screen will switch over to a full screen display.

### Operation with projector

You can also change by selecting [MULTI-LIVE] from the "Network" menu of the projector and pressing the <ENTER> button.

#### Note

<MULTI-LIVE> button may not be on the remote control supplied with the projector depending on the model. If you cannot operate from the remote control, operate from the "Network" menu of the projector.

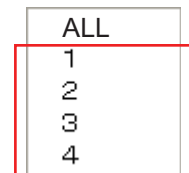
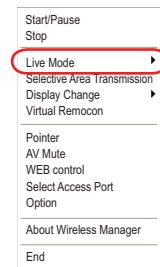
- 2 Check the status indication on the launcher to make sure that transmission is possible (🔴🟢). (See page 32)**

- 3 Click [🔵].**

The launcher menu will appear.

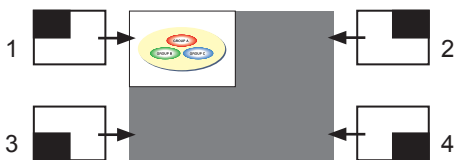
- 4 Click [Live Mode] in the launcher menu.**

- 5 Select and click the projection position.**



- 6 Click [▶] on the launcher.**

The computer image is transmitted to the selected quarter of the projection screen.



### ■ Switching to a different position

Select and click a different projection position in step 4 above.

### ■ Enlarged display

Click [Live Mode] and [ALL] from the launcher menu to display the PC screen onto the entire projection screen. To return to the original display, click [Live Mode] on the launcher and select original projection positions with each computer.

### ■ Quitting 4-screen multi-live

Click [🔵] on the launcher.

#### Notes

- In the 4-screen multi style, the computer screens from all the computers connected to the projector can be transmitted to the projector. (If an image from another computer has been sent to the image position where an image is already displayed, the existing image is replaced by the new image.)
- Picture quality or other options can be set on the <Option> window by clicking [Option] in the launcher menu. (See page 49)
- If the connection error occurs during projection, the message ["Live mode" is deactivated] will appear. Check the communication environment, then restart projection by clicking launcher buttons.

## Various projection methods (cont.)

### 4-screen index style

When the projector is set to “4-screen index style”, connect up to 4 computers to one projector, and then simultaneously display the screens for the 4 computers on the index windows and also on a large screen.  
(If the connection is completed, and input is via network.)

#### 1 Press the [MULTI-LIVE] button of the remote control to switch the projection screen to “4-screen index style”. (See page 35)

##### Operation with projector

You can also change by selecting [MULTI-LIVE] from the “Network” menu of the projector and pressing the <ENTER> button.

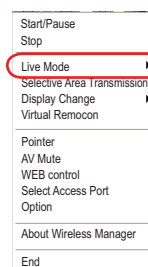
##### Note

<MULTI-LIVE> button may not be on the remote control supplied with the projector depending on the model.  
If you cannot operate from the remote control, operate from the “Network” menu of the projector.

#### 2 Check the status indication on the launcher to make sure that transmission is possible (🔄). (See page 32)

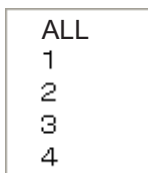
#### 3 Click [📺].

The launcher menu will appear.



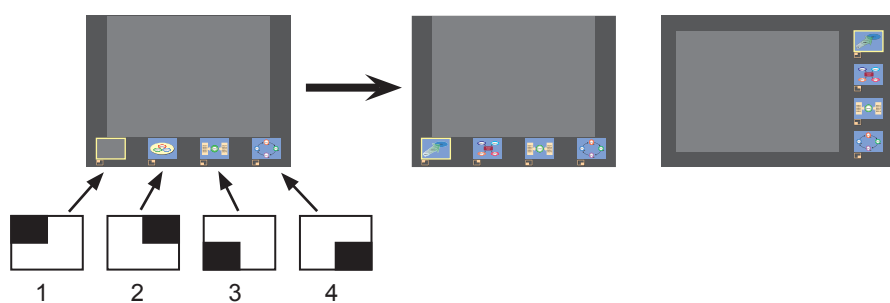
#### 4 Click [Live Mode] in the launcher menu.

#### 5 Select and click the projection position.



#### 6 Click [▶] on the launcher.

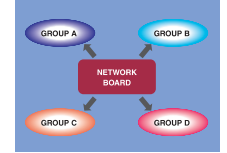
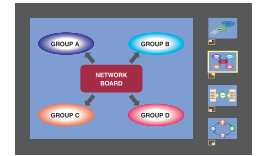
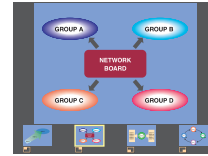
The computer image is transmitted to the area of corresponding window.



## Various projection methods (cont.)

### ■ Enlarged display

- Use the [◀ ▶] buttons on the remote control to move the focus (yellow box) to the image to be enlarged, and press the [ENTER] button. The image is enlarged and displayed at the top of the projection screen.
- The image display will fill the entire screen if the [ENTER] button is pressed again.
- To return to the 4-screen index style, press the [ENTER] button again.




#### Notes

- While an enlarged image is displayed, the [PAGE ▲ ▼] buttons on the remote control will function in the same way as the computer's Page Up and Page Down keys. (When using "Presenter View" of "PowerPoint", the [PAGE ▲ ▼] buttons of the remote control correspond to Back space key and Space key.) This means that if you run a computer application that supports the Page Up and Page Down keys, the presentation screen can be changed using the remote control.
- Picture quality or other options can be set on the <Option> window by clicking [Option] in the launcher menu. (See page 49)
- If the connection error occurs during projection, the message ["Live mode" is deactivated] will appear. Check the communication environment, then restart projection by clicking launcher buttons.
- Depending on the model, use the [▲ ▼] buttons on the remote control to move the focus (yellow box).

### ■ Quitting the 4-screen index style projection

Click [■] on the launcher.

#### Note

In the 4-screen index style, the status display lamp remains lit green (  ). Other computers can send images only to the windows which are not being used.

## Various projection methods (cont.)

### 16-screen index style

When the projector is set to “16-screen index style”, connect up to 16 computers to one projector, and simultaneously display the screens for the 16 computers.

(If the connection is completed, and input is via network.)

#### 1 Use the [MULTI-LIVE] button on the remote control to set the projection screen to “16-screen index style.” (See page 35)

##### Operation with projector

You can also change by selecting [MULTI-LIVE] from the “Network” menu of the projector and pressing the <ENTER> button.

##### Note

<MULTI-LIVE> button may not be on the remote control supplied with the projector depending on the model.

If you cannot operate from the remote control, operate from the “Network” menu of the projector.

#### 2 Check the status indication on the launcher to make sure that transmission is possible (🔌). (See page 32)

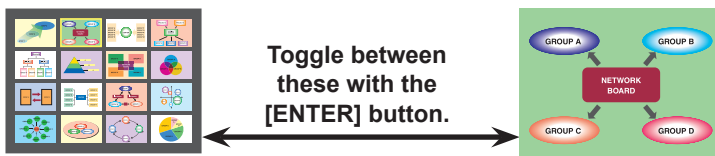
#### 3 Click [▶] on the launcher.

The computer images are automatically sent to the empty windows on the 16-screen display.

Display position is not selectable.

### ■ Enlarged display

- Use the [◀▶▲▼] buttons on the remote control to move the focus (yellow box) to the image to be enlarged and press [ENTER] to expand that image to fill the display.
- Press [ENTER] again to return to the 16-screen index style.



##### Notes

- While an enlarged image is displayed, the [PAGE ▲ ▼] buttons on the remote control will function in the same way as the computer's Page Up and Page Down keys. (When using “Presenter View” of “PowerPoint”, the [PAGE ▲ ▼] buttons of the remote control correspond to Back space key and Space key.) This means that if you run a computer application that supports the Page Up and Page Down keys, the presentation screen can be changed using the remote control.
- Picture quality or other options can be set on the <Option> window by clicking [Option] in the launcher menu. (See page 49)
- If the connection error occurs during projection, the message [“Live mode” is deactivated] will appear. Check the communication environment, then restart projection by clicking launcher buttons.

### ■ Quitting the 16-screen index style projection

Click [■] on the launcher.

# Various projection methods (cont.)

## Multiple Source Live Mode

You can simultaneously project one computer's screen on up to eight projectors.

### Note

Projection can be provided for the projector having the same network number of either "1" through "4" or "USER1" through "USER3".

- 1 Press the [MULTI-LIVE] button on the remote control to turn the projection screen into a full screen display (the status when no index window is displayed). (See page 35)**

If you press the [MULTI-LIVE] button once or twice when index windows are displayed on the projection screen, the screen will switch over to a full screen display.

### Operation with projector

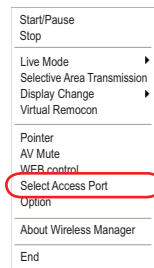
You can also change by selecting [MULTI-LIVE] from the "Network" menu of the projector and pressing the <ENTER> button.

### Note

<MULTI-LIVE> button may not be on the remote control supplied with the projector depending on the model. If you cannot operate from the remote control, operate from the "Network" menu of the projector.

- 2 Click [  ].**

The launcher menu will appear.



- 3 Click [Select Access Port] in the launcher menu.**  
(When controlling multi-live in the search screen)

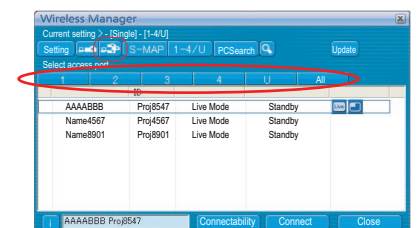
- 4 Click [1-4/U] from the setting menu.**

<Projector Search> window – [1-4/U] is displayed.  
If the setting menu is not displayed, click [Setting ▶].



- 5 Click [  ].**

- 6 Select the network number of the desired projectors.**  
Projectors powered on in the chosen network group are listed.

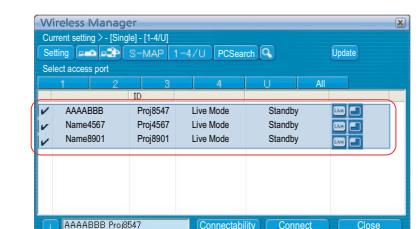


- 7 Select the desired projectors, and click [Connect].**

The selected projector is displayed with a blue-colored [  ].

If click again, selected items are canceled.

If click [Connect], the connection with the projectors is established.





## Various projection methods (cont.)

---

**8** Check the status indication on the launcher to make sure that transmission is possible (). (See page 32)


**9** Click [] on the launcher.

The same image is projected from all projectors selected in step 7.

### Notes

- Projection is provided in multi-live mode for the projector having the same network number that is selected in PC.
- Among the selected projectors, if there is one to which other PC is transmitting data or of which the projection screen is not set to full-screen, projection is provided for that one.
- The greater the number of projectors, the slower the transmission.
- Picture quality or other options can be set on the <Option> window by clicking [Option] in the launcher menu. (See page 49)
- Sound cannot be output in the multiple source live mode.
- If the connection error occurs during projection, the message [“Live mode” is deactivated] will appear. Check the communication environment, then restart projection by clicking launcher buttons.
- Set the [LIVE MODE CUT IN] of the projector to [ON] in advance to enable a different computer to interrupt and project images in live mode.

### ■ Quitting multiple source live mode

Click [] on the launcher again.

# Various projection methods (cont.)

## Multiple Source Multi Live Mode

Up to 4 computers are connected to the maximum of 8 projectors; each projector provides 4-screen multi-style view.

**Note**

Can be projected by projectors that have a network number of [1]-[4] or [USER1]-[USER3].

### 1 Press the [MULTI-LIVE] button on the remote control to turn the projection screen into a full screen display (the status when no index window is displayed). (See page 35)

If you press the [MULTI-LIVE] button once or twice when index windows are displayed on the projection screen, the screen will switch over to a full screen display.

**Operation with projector**

You can also change by selecting [MULTI-LIVE] from the “Network” menu of the projector and pressing the <ENTER> button.

**Note**

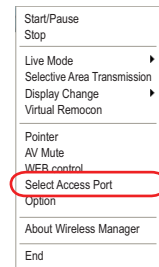
<MULTI-LIVE> button may not be on the remote control supplied with the projector depending on the model. If you cannot operate from the remote control, operate from the “Network” menu of the projector.

### 2 Click [🏠].

The launcher menu will appear.

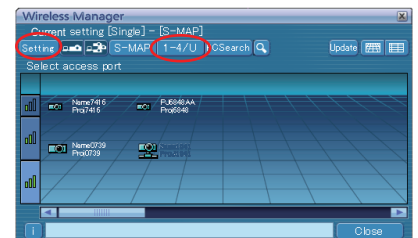
### 3 Click [Select Access Port] in the launcher menu.

(When controlling multi-live in the search screen)



### 4 Click [1-4/U] from the setting menu.

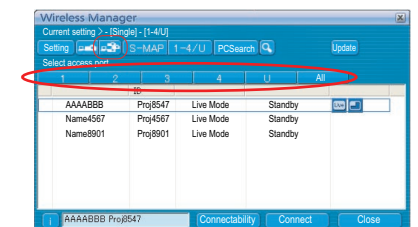
<Projector Search> window – [1-4/U] is displayed. If the setting menu is not displayed, click [Setting ▶].



### 5 Click [🔍].

### 6 Select the network number of the desired projectors.

Projectors powered on in the chosen network group are listed.

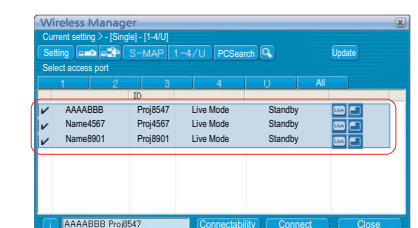


### 7 Select the desired projectors, and click [Connect].

The selected projector is displayed with a blue-colored [✓].


If click again, selected items are canceled.

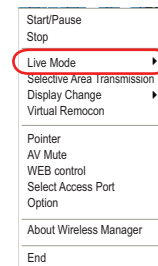
If click [Connect], the connection with the projectors is established.



## Various projection methods (cont.)


8 Check the status indication on the launcher to make sure that transmission is possible (  ). (See page 32)

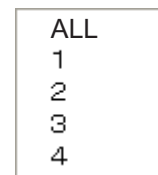
9 Click [  ].  
The launcher menu will appear.



10 Click [Live Mode] in the launcher menu.

11 Select and click the projection position.

12 Click [  ] on the launcher.  
The computer image is transmitted to the selected quarter of the projection screen.



### ■ Switching to a different position

Select and click a different projection position in step 11 above.


### ■ Enlarged display

If [Live Mode] – [All] are clicked in the launcher menu, projector screens temporarily change to full screen display. To return to the original display, click [Live Mode] on the launcher and select original projection positions with each computer.

### ■ Secondary viewer function

If another computer switches to the enhanced view, your screen will disappear from the projection screen while you are using the secondary display transmission feature; however, it is displayed as a secondary viewer on computer screen. (See page 45)

### ■ Quitting multiple source multi live mode

Click [  ] on the launcher.

#### Notes

- From the selected projectors, multiple projectors that have the same network number are projected in multi-live mode.
- If LB20NT/30NT or a projector whose projection screen is not set to full screen display is included among the selected projectors, the launcher live mode [1]-[4] will be grayed out, preventing the projector from being selected.
- The greater the number of projectors, the slower the transmission.
- In multiple source multi live mode even when the remote projector [MULTI-LIVE] button is pressed no operation will result.
- Picture quality or other options can be set on the <Option> window by clicking [Option] in the launcher menu. (See page 49)
- If the connection error occurs during projection, the message ["Live mode" is deactivated] will appear. Check the communication environment, then restart projection by clicking launcher buttons.

# Useful Functions

## Selective Area Transmission

By using the selective area window, you can specify the necessary information alone from the computer screen, and display it on the projection screen.

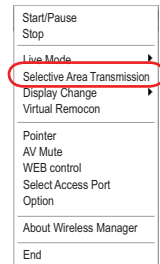
### Note

The restrictions of this software vary with the projector used.

For the latest information, see the applicable projector model list in our website (<http://panasonic.net/avc/projector/>). If there is the CD-ROM of this software in the accessory of the projector, see the "Applicable projector model list" in the application launcher in it.

### 1 Click [ ].

The launcher menu will appear.






### 2 Click [Selective Area Transmission] in the launcher menu.

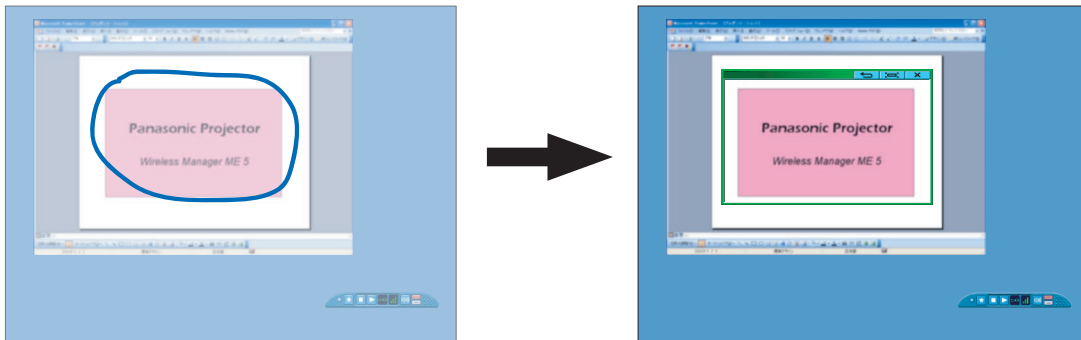
The range selection screen is displayed.

### 3 With the left mouse button held down, surround the area you want to send to the projector.

Selective area window (green) appears on computer screen.

You can perform operations in the selective area window with the same operation for moving or changing the window on the computer screen.

- If clicking [  ], automatically determine the size of selected area and enclose it with a framework.
- If clicking [  ], the selective area window changes to its default size.
- If clicking [  ], the selective area transmission function ends.



### Note

If you have drawn a straight line, a selective area window is displayed in the diagonal direction from your line.

### 4 Check the status indication on the launcher to make sure that transmission is possible ( ). (See page 32)


### 5 Click [ ] on the launcher.

The picture in the selective area window is projected.

### Notes

- The picture inside the selective area window is displayed as big as possible with keeping the original aspect ratio to be fit for the resolution of projection screen.
- If you use Wireless Manager as a [Standard User] of Windows Vista or Windows 7 in the [Installation free set up] condition, the selective area transmission feature is not available.

### ■ Quitting selective area transmission

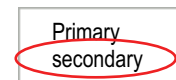
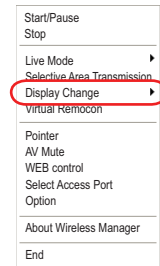
Click [Selective Area Transmission] on the launcher again, or click [  ] on the upper right of the selective area window.

# Useful Functions (cont.)

## Secondary display transmission

You can set the computer screen and the projector screen to the multi-monitor mode, and use the computer screen as the primary monitor and the projector screen as the secondary monitor.

- 1 Click [🔵].**  
The launcher menu will appear.
- 2 Click [Display Change] in the launcher menu.**  
The window shown to the right appears.
- 3 Click [Secondary].**
- 4 Check the status indication on the launcher to make sure that transmission is possible (🟢👁️). (See page 32)**
- 5 Click [▶️] on the launcher.**  
The PC's secondary screen is projected to the projector.



### Notes

- Like the normal multi-monitor function, you can change the relative positions of the primary monitor (computer screen) and secondary monitor (projector screen) in the [Settings] tab in the [Screen Properties] window ([Start] → [Control Panel] → [Appearances and Themes] → [Screen]).
- It is impossible to send images to the secondary monitor by the selective area transmission (See page 44).
- If the computer has been set to the multi-monitor mode, the monitor for the display switch-over function will be displayed as the third monitor in [Display Properties] of Windows.
- Some moving image applications may not play moving images when you are using secondary display transmission in Windows Vista or Windows 7.
- When using a Windows Vista or Windows 7 computer, you must be logged in to an administrator account in order to use the secondary display transmission function.  
Note that this function cannot be used in some operating environment.

### ■ Quitting secondary display transmission

Click [Primary] in step 2.

## Secondary Viewer

If you are using secondary display transmission function and projecting a secondary monitor screen in multiple source multi live mode, once [Live Mode] – [All] is pressed on one of the computers, the full screen display from the computer will override all the rest, and it will no longer be possible to verify the secondary screens of the other computers on the projector screen(s). In this case, the secondary screen that you were projecting will appear on your desktop as a secondary viewer in reduced form. Also, while using the secondary display transmission in the 4-screen index style and the 16-screen index style, the secondary viewer appears.



### Notes

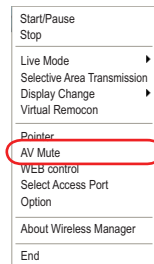
- You can perform operations on the secondary monitor while observing the secondary viewer on the computer screen, however an image will not appear on the projection screen(s) until the projection screen(s) goes back to the original projection style.
- When the projector screen(s) return to its original status, the contents of the secondary viewer are displayed on the projection screen(s), and the secondary viewer is closed as well.

## Useful Functions (cont.)

### AV Mute function

Blanks the screen for a moment.

- 1 Click [AV Mute].**  
The launcher menu will appear.
- 2 Click [AV mute] in the launcher menu.**  
The image is turned off.  
Audio output also goes out.
- 3 Click [AV mute] in the launcher menu again.**  
[AV mute] is disengaged.



#### Note

The AV mute Function is available only in live mode or multiple source live mode.

### Pointer function

You can change the shape of the Pointer appearing on the projection screen in live mode or multiple source live mode to one that can be used for presentation purposes.

**Click [Pointer] in the launcher menu.**

#### ■ Quitting Pointer function

Click [Pointer] in the launcher menu again.



### WEB control function

Control a projector through the WebBrowser of a computer.

For details, refer to the "Operating Instructions" of the projector, or "Network Operations".

## Useful Functions (cont.)

---

### USB display function

Connect the projector to a PC using the USB cable and transfer the video and audio to the projector.

•If you are connecting the USB cable for the first time, it is necessary to install a USB driver. For how to install the USB driver, see “Installing the USB driver” (See page 48).

#### **1 Temporarily close Wireless Manager ME 5.5.**

If Wireless Manager ME 5.5 is operating, close it.

#### **2 Enable the “USB display” function on the projector.**

Set the network on the projector to “USB display”.

#### **3 Connect the projector to the PC using the USB cable.**

#### **4 The Wireless Manager ME 5.5 starts automatically and projection begins.**

The launcher is stored in the task tray.

#### **5 To close the USB display function, stop projection and disconnect the USB cable.**

Wireless Manager ME 5.5 will close.

If you disconnect the USB cable during projection, the projector picture will disappear.

When reconnecting the USB cable, wait for a short time (at least 10 seconds) before reconnecting.

#### **Notes**

- This function is only available on projectors that support the USB display function.
- If the USB cable is disconnected during projection and you wish to reconnect it, wait for a short time (at least 10 seconds) before reconnecting.

# Useful Functions (cont.)

## ■ Installing the USB driver

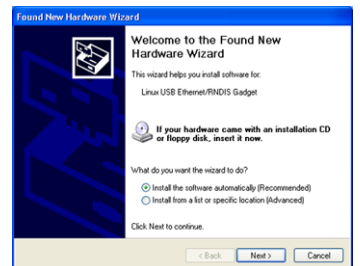
When you connect the USB cable for the first time, the “Found New Hardware Wizard” screen appears. Now perform the following steps.

**1** When the “Welcome to the Found New Hardware Wizard” screen appears, select “No, not this time” and click the “Next” button.



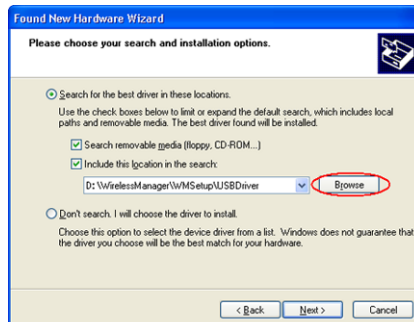
**2** Insert the supplied CD-ROM into the CD-ROM drive.

**3** Select “Install from a list or specific location (Advanced)”, and click the “Next” button.



**4** Select “Search for the best driver in these locations”, click the “Browse” button under “Include this location in the search”, select the “USBDriver” folder on the CD-ROM using the “Browse For Folder” dialog box, and click the “OK” button.

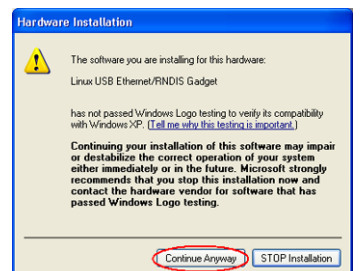
The “USBDriver” folder is in the “\WirelessManager\WMSetup” folder on the CD-ROM.



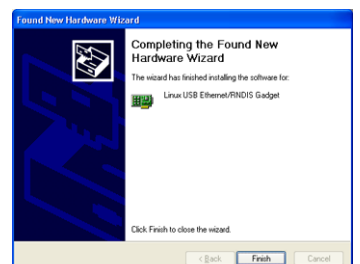
**5** It is now time to return to the wizard screen, so click the “Next” button.

**6** The “Hardware Installation” screen is displayed, so click the “Continue Anyway” button.

If you are using a PC running Windows Vista or Windows 7, select “Install this driver software anyway” on the “Windows security” screen.



**7** When the “Completing the Found New Hardware Wizard” screen appears, click the “Finish” button.



### Note

If you change the USB port on the PC, it is necessary to perform the above-described operations again.

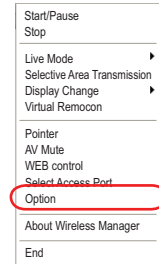


# Setting options

You can make various settings related to Wireless Manager ME 5.5.

## Setting options

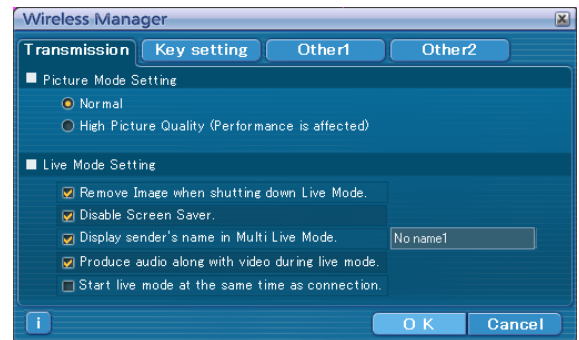
- 1 Click [🔍].  
The launcher menu will appear.



- 2 Click [Option] in the launcher menu.  
The <Option> window shown to the right appears.

- 3 Click the desired tab to be set.

- 4 Click [OK].



## Transmission

### Resolution

Select the quality of the image transmitted from the computer to the projector.

- [Normal]  
This gives priority to speed when in live mode.
- [High Picture Quality (Performance is affected)]  
This gives priority to picture quality when in live mode.

### Live Mode Settings

- [Remove Image when shutting down Live Mode.]  
Set this if you want to make images on the projector cleared at the end of live mode.
- [Disable Screen Saver]  
This disables the computer screen saver function while Wireless Manager ME 5.5 is operating. Check this box to disable screen saver operation during live mode.
- [Display sender's name in Multi Live Mode]  
The characters (max. 8) which have been entered are displayed at the upper right of the transmitted screen. In the 4-screen and 16-screen index style modes, they are also displayed at the bottom of each image. (Alphanumerics are not displayed when the check mark has been removed.)
- [Produce audio along with video during Live Mode]  
You can set this when you want to output audio data from a projector in live mode. Also, volume setting operated from the launcher is different from the Windows' volume setting, and it is effective only for wireless connection. When finishing Wireless Manager ME 5.5, the Windows' volume setting becomes active. Sound can be output only in live mode.
- [Start Live Mode at the same time as connection]  
Projection starts when the connection is made without having to click the live button.

#### Note

In the initial settings, [Disable Screen Saver] is enabled. Please remember that the password protected screen saver is disabled if you need to leave your computer.

# Setting options (cont.)

## Key setting

You can set shortcut key combinations that let you control the Wireless Manager ME 5.5 functions by computer keyboard operations.

- 1 Select the mode or the function to be set for the shortcut key, and click it.**
- 2 Select one from [Ctrl], [Alt], and [Shift].**
- 3 Select the alphabet letter to use with the key set in step 2 from the alphabet letter list.**
- 4 Click [Setting].**  
The shortcut key set in step 2 - 3 appears in the blank space. If click [Clear], the shortcut settings are canceled.



[Use "Pause" key to stop/continue Live Mode]: Check this to run/stop live-mode/multi live-mode by pressing the Pause key.

### Note

In live mode and multi live mode, the shortcut key switches the mode without stopping live mode.

## Other1

Perform other settings.



### Setting Favorites

It is possible to assign whatever name you like to the projector currently connected.

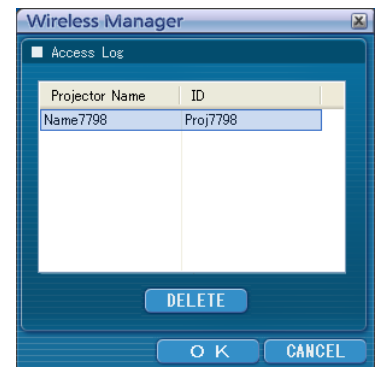
The name appears at the bottom of the <Projector Search> window. Click [Settings] to display the <Register Favorite Name> screen, and enter a name for the projector.



### Automatic connection setting

You can perform automatic settings for newly connected projectors.

- If the [Make an automatic connection] box is checked and a projector is registered as a destination for automatic connection when Wireless Manager ME 5.5 is started, <Projector Search> window – [S-MAP] do not appear and connection is performed automatically.
- When [Setting] is clicked, <Access Log> window appears and you can select projector(s) for automatic connections. Up to 10 projectors may be displayed in the order of most recent connection history. When it is desired to remove a projector from the display list, select it and press the [DELETE] → [OK] button.



# Setting options (cont.)

## User settings

- User name  
When [Setting] is clicked, the <User name setting> window to the right appears. Set the icon and user name shown in the <Projector Search> window ([S-MAP], [1-4/U] or [PC Search]).



**Note**

Enter the user name in up to 8 alphanumeric.

- Favorites Button  
Assign whichever function you like to a specific launcher button. (See page 33)

- |  |                                 |  |                    |
|--|---------------------------------|--|--------------------|
|  | : [Select Access Port]          |  | : [WEB control]    |
|  | : [Option]                      |  | : [AV Mute]        |
|  | : [Selective Area Transmission] |  | : [Display Change] |
|  | : [Virtual Remocon]             |  | : None             |

## Other2

Perform other settings.

### Network

Set the wired LAN and wireless LAN adapter used to connect to the projector.

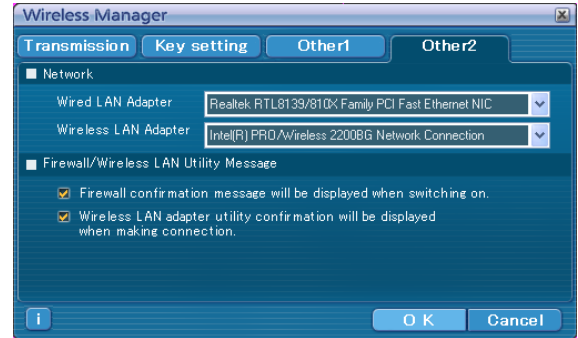
[Wired LAN Adapter]:

Adapter used when connecting to the projector via a wired LAN.

[Wireless LAN Adapter]:

Adapter used when connecting to the projector via a wireless LAN.

※ The displayed (selected) LAN adapter is used to connect to the projector.



### Firewall/Wireless LAN Utility Message

- [Firewall confirmation message will be displayed when switching on.]  
The firewall confirmation message for the firewall that is operating when the application starts is displayed.
- [Wireless LAN adapter utility confirmation will be displayed when making connection.]  
When switching network connections, if the wireless LAN adapter utility is operating, a confirmation message is displayed.

※ If the box for the confirmation is unchecked, the message will no longer be displayed.

## Version information

The version information of Wireless Manager ME 5.5 is displayed when on the <Option> window is clicked.

# Glossary

| Category                      | Item                   | Descriptions  | Page                                |
|-------------------------------|------------------------|---|-------------------------------------|
| Common Setting of connections | <b>LAN</b>             | Abbreviation for Local Area Network. This is a network with a relatively narrow range such as inside a company.   | <b>10</b>                           |
|                               | <b>Access point</b>    | These are stations for relaying electromagnetic signals between computers in a wireless LAN. When a computer is connected to an access point, it can communicate through the network connected to the access point.   | <b>24</b>                           |
|                               | <b>MAC address</b>     | Each wireless LAN adapter has its own ID No. A discrete ID No. is assigned to each and every wireless LAN adapter around the world. These IDs are used to exchange data between adapters. These IDs are a combination of a discrete number managed and assigned by the IEEE to each individual manufacturer and a unique number assigned to each individual card by the manufacturer. | <b>24</b>                           |
|                               | <b>IP address</b>      | Internet Protocol (IP) is a protocol for distributing data, and the address corresponding to the data distribution destination is called the IP address. The same IP address cannot be used within the same LAN.  | <b>25</b><br><b>28</b><br><b>29</b> |
|                               | <b>DHCP</b>            | Abbreviation for Dynamic Host Configuration Protocol. This function automatically assigns IP addresses to the connected equipment. If a device with the DHCP server function is present within a LAN, it automatically assigns IP addresses to the connected equipment.   | <b>25</b><br><b>28</b>              |
|                               | <b>Subnetmask</b>      | This limits the range of the IP addresses assigned to computers in order to divide the network into a number of sections during TCP/IP connection. The value used to divide the network at this time is called the subnetmask.  | <b>25</b><br><b>28</b>              |
|                               | <b>Default Gateway</b> | The devices that are used for different network standards from yours. Default Gateway enables a connection with other network, by adjusting bilateral differences such as communication protocols. If no gateway is specified for the IP address of access destination, data will be sent to the host set as the default gateway.   | <b>25</b><br><b>28</b>              |
|                               | <b>Domain Name</b>     | The identifier that corresponds to the location to which data is delivered by the network. It is an alias name consisting of alphabet, numbers, and symbols that replace the more difficult to use enumerated IP address.   | <b>29</b>                           |

## Glossary (cont.)

| Category                             | Item  | Descriptions   | Page             |
|--------------------------------------|---|--|------------------|
| Advanced<br>setting of<br>connection | <b>AD HOC</b>                                   | This is the mode in which computers communicate with each other directly, rather than via access points.   | <b>25</b>        |
|                                      | <b>INFRASTRUCTURE<br/>(infrastructure mode)</b> | This is the mode in which communications are performed via the access point.   | <b>24</b>        |
|                                      | <b>SSID</b>                                     | Abbreviation for Service Set ID. The SSID identification code must be set to distinguish equipment included in a wireless LAN that uses access points from equipment not included in that LAN. This may appear as the "ESSID" or the "network name" for wireless LAN adapters made by some manufacturers.                              | <b>25</b>        |
|                                      | <b>Open System/<br/>OPEN</b>                    | This is an authentication of wireless signals employing a public key cryptosystem.   | <b>25</b>        |
|                                      | <b>Shared Key/<br/>SHARED</b>                   | This is a secret key cryptosystem for wireless signals in which authentication is performed with a key pre-set in the WEP. Other terms for this method, in which the same key is used for both encryption and decryption, are "shared key cryptosystem" and "common key cryptosystem".   | <b>25</b>        |
|                                      | <b>WPA-PSK<br/>WPA2-PSK</b>                     | This is a standard covering encryption methods used in wireless LAN. It provides greater security than WEP, and has functions such as a user authentication function and also TKIP (encryption protocol) which automatically changes the encryption key at fixed intervals. And this authentication requires no authentication server. | <b>25</b>        |
|                                      | <b>WEP</b>                                      | Abbreviation for Wired Equivalent Privacy. This is a method for encrypting communication data. The encryption key is created and notified only to the communicating user, so the communication data cannot be decrypted by a third party.  | <b>17<br/>25</b> |
|                                      | <b>TKIP</b>                                     | Abbreviation for Temporal Key Integrity Protocol. This encryption protocol provides even greater security than WEP because it changes the encryption key at fixed intervals.   | <b>25</b>        |
|                                      | <b>AES</b>                                      | Next generation standard cryptography standardized by the National Institute of Standards and Technology (NIST).<br>AES: Advanced Encryption Standard  | <b>17</b>        |

# Frequently Asked Questions

---

Check the following points once more before requesting repair.

## No wireless connection can be made between my projector and my computer.

- **Is Wireless Manager ME 5.5 running?**

Wireless Manager ME 5.5 must be started in the computer in order to enable wireless transmissions of images to the projector.

### <When a setting error for the wireless LAN adapter has been detected>

- ① **Is the wireless LAN adapter effective?**

If the wireless LAN adapter is disabled, enable it.

For some PCs with an internal wireless LAN, the hardware switch or the software setting might have turned off the wireless LAN.

If it is turned "OFF," turn it "ON" before start Wireless Manager ME 5.5.

(For some Bluetooth-equipped PCs, Bluetooth might be set at higher priority; switch the priority to wireless LAN.)

Refer to the operation manual of your PC for information about switching on/off.

- ② **Is your wireless LAN adapter properly recognized on the network?**

Sometimes, cards are not correctly recognized by the computer. Check Windows [Device Manager] to make sure your card has been recognized.

If the Network Adapter is indicated with [?] in [Device Manager], wireless LAN adapter installation is not complete. See the User's Manual of your card and re-install the card driver.

#### ■ To display [Device Manager]

- **In Windows XP**

Click [Start] → [Control Panel] → [Performance and Maintenance] → [System]. This will bring up the [System Properties] dialog box. Click [Device Manager] in the [Hardware] tab.

- **In Windows Vista**

Click [Start] → [Control Panel] → [System and Maintenance] → [System]. This will bring up [View basic information about your computer]. Click [Device Manager].

- **In Windows 7**

Click [Start] → [System and Security] → [System] to display [View basic information about your computer]. Click [Device Manager].

- ③ **Some wireless LAN adapters may allow Easy Wireless Set Up connections to function if drivers are updated.**

(Consult the manufacturer of your driver about updates.)

## Frequently Asked Questions (cont.)

### No wireless connection can be made between my projector and my computer. (cont.)

#### <When the Network Bridge setting has been detected>

##### Is Network Bridge enabled?

If you are using Windows XP, Windows Vista, or Windows 7, Network Bridge may be set. (Network Bridge is a function of Windows XP, Windows Vista, and Windows 7.)

The settings in Network Bridge must be changed in order to make a wireless connection. If you do not expect ever to use Network Bridge and see no need for it, delete it from your system.

##### ■ To verify whether your system has Network Bridge (Windows XP)

Choose [Connect to] on the [Start] menu and click [Show all connections]. Verify that [Network Bridge] is displayed in the <Network Connections> window. Perform either ① or ② below.

##### ① How to change settings in Network Bridge

1. Select [Connect to] on the [Start] menu and click [Show all connections].
2. Right-click [Network Bridge] and click [Properties].
3. Remove the check mark from the [Wireless Network Connection] box in the [Network Bridge Properties] dialog box (if the box is not checked, proceed to step 4.)
4. Click [Properties] in [Internet Protocol (TCP/IP)] in the [Network Bridge Properties] dialog box.
5. Click the [Alternate Configuration] tab in the [Internet protocol (TCP/IP) properties] dialog box.
6. Check the [User configured] box and set the [IP address] and [subnetmask] as follows:  
IP address : 10. 10. 11. 101  
[subnetmask] : 255.255. 0. 0  
(If the above IP address is already in use in the LAN environment, change it as appropriate in Class A. Confirm to your system administrator on network settings before changing any settings.)
7. Click [OK] → [Close].
8. Close the [Network Connections] dialog box.

##### ② How to delete the network bridge

1. Select [Connect to] on the [Start] menu and click [Show all connections].
2. Right-click [Network Bridge] and click [Delete].

##### ■ To verify whether your system has a Network Bridge (Windows Vista/Windows 7)

Select [Control Panel] on the [Start] menu, select [Network and Internet], and double-click on [Network and Sharing Center]. Select [Manage network connections] in the [Network and Sharing Center] dialog box. Verify that [Network Bridge] is displayed in the [Network connection] dialog box.

Perform either ① or ② below.

##### ① How to change settings in Network Bridge

1. Select [control panel] on the [Start] menu, and double-click on [Network and Sharing Center].
2. Select [Manage network connections] in the [Network and Sharing Center] dialog box.
3. Right-click [Network Bridge] and click [Properties].
4. Click [Continue] in [User Account Control].
5. Remove the check mark from [Wireless Network Connection] box in the [Network Bridge Properties] dialog box (if the box is not checked, proceed to step 6).
6. Click properties in [Internet Protocol Version 4 (TCP/IPv4)] in the [Network Bridge Properties] dialog box.
7. Click the [Alternate Configuration] tab in the [Internet Protocol Version 4 (TCP/IPv4) Properties] dialog box.
8. Check [User Configuration], and set the [IP address] and [subnetmask] as follows:  
IP address : 10. 10. 11. 101  
[subnetmask] : 255.255. 0. 0  
(If the above IP address is already in use in the LAN environment, change it as appropriate in Class A. Confirm to your system administrator on network settings before changing any settings.)
9. Click [OK]→ [Close].
10. Close the [Manage Network Connections] dialog box.
11. Close the [Network and Sharing Center] dialog box.

##### ② How to delete the Network Bridge.

1. Select [Control Panel] on the [Start] menu, select [Network and Internet], and double-click on [Network and Sharing Center].
2. Select [Manage network connections] in the [Network and Sharing Center] dialog box.
3. Right-click [Network Bridge] and click [Delete].
4. Click [Yes] in the [Confirm Connection Delete] dialog box.
5. Click [Continue] in [User Account Control].

# Frequently Asked Questions (cont.)

## No wireless connection can be made between my projector and my computer. (cont.)

### <When Windows Firewall has been detected>

#### ● Windows XP

##### Has Windows XP firewall been disabled?

The firewall in Windows XP must be disabled in order to connect to a wireless network.

##### ■ How to disable the firewall in Windows XP

1. Click [Start] → [Control Panel] → [Network and Internet Connections] → [Network Connections].
2. Right-click [Wireless Network Connection] and click [Properties] in the pulldown menu.
3. Click the [Advanced] tab and set the [Internet Connection Firewall] checkbox to OFF.

#### ● Windows XP SP2/SP3

##### Is Wireless Manager ME 5.5 registered in the [Control Panel] → [Security Center] → [Windows Firewall] → [Exception] tab with the Windows XP SP2/SP3?

Register Wireless Manager ME 5.5 in the Exceptions to Application List of the firewall.

##### ■ How to register

1. Click [Start] → [Control Panel].
2. Click [Security Center] → [Windows Firewall] when <Control Panel> window opens.
3. Click the [Exceptions] tab and then [Add Program...] when the <Windows Firewall> window opens.
4. Click [Wireless Manager mobile edition 5.5 (WM.exe)] to allow connection with external devices under [Programs] when the <Add a Program> window opens.  
If [Wireless Manager mobile edition 5.5 (WM.exe)] does not appear on the list of programs, click [Browse...] and select [WM.exe].
5. [Wireless Manager mobile edition 5.5] is displayed in the [programs and services] field.
6. Double-click [Wireless Manager mobile edition 5.5], and open the [Edit a Program] window.
7. Click the [Change Scope] button at the lower left of the window.
8. When the [Change Scope] window opens, select the desired network as described below. Select [Any computer (including those on the Internet)].
9. Click [OK].
10. Click [OK] in the [Edit a Program] window.
11. Click [OK] in the [Windows Firewall] window.  
With this, the Wireless Manager ME 5.5 firewall will be deleted.

#### ● Windows Vista

##### Is Wireless Manager ME 5.5 registered in the [Start] → [Control Panel] → [Windows Firewall] → [Allow a program through Windows Firewall] → [Exceptions] tab?

Register Wireless Manager ME 5.5 in the Exceptions to Application List of the firewall.

##### ■ How to Register

1. Click [Start] → [Control Panel].
2. Double-click the [Windows Firewall] tab when the [Control Panel] window opens.
3. Click [Allow a program through Windows Firewall] when the [Windows Firewall] dialog box opens.
4. Click [Continue] in [User Account Control].
5. Click the [Exceptions] tab and then [Add program...] when the [Windows Firewall Settings] window opens.
6. Click [Wireless Manager mobile edition 5.5] when the [Add program...] window opens.  
If [Wireless Manager mobile edition 5.5] does not appear in [Programs], click [Browse...] and select [WM.exe].
7. [Wireless Manager mobile edition 5.5] is displayed in the [Program or port] field.
8. Double-click [Wireless Manager mobile edition 5.5], and open the [Edit a Program] window.
9. Click the [Change scope...] button at the lower left of the window.
10. When the [Change scope] window opens, select the desired network as described below. Select [Any computer (including those on the Internet)].
11. Click [OK].
12. Click [OK] in the [Edit a Program] window.
13. Click [OK] in the [Windows Firewall] window.
14. With this, the Wireless Manager ME 5.5 firewall will be deleted.

#### ● Windows 7

##### Is this software registered in [Start] → [Control Panel] → [System and Security] → [Allow a program through Windows Firewall]?

##### ■ How to Register

1. Click [Start] → [Control Panel].
2. Click [System and Security] when the [Control Panel] window opens.
3. Click [Allow a program through Windows Firewall] in the [System and Security] window.
4. Click the [Change settings] button to change to the allow registration mode.
5. Click the [Allow another program (R)...] button, select [Wireless Manager mobile edition 5.5], and click the [Add] button.
6. Confirm that this software has been added to the [Allowed programs and features (A):] list. Confirm that the Private and Public checkboxes are checked.
7. Click the [OK] button in the [Allow programs to communicate through Windows Firewall] window.
8. With this, the Wireless Manager ME 5.5 firewall will be deleted.



# Frequently Asked Questions (cont.)

## No wireless connection can be made between my projector and my computer. (cont.)

### <When another firewall has been detected>

#### Are any firewall-containing applications installed?

If any applications which contain firewalls are installed, the installation may hang up at the [Projector search in progress] display (some firewalls function even when not started).

If this occurs, firewall settings must be changed in order to allow connection to the wireless network. See the User's Manuals for all applications containing firewalls to perform these settings.

### <When the user does not have the administrator authority>

- If you have logged onto a computer as a [GUEST] or a restricted user who does not have administrator authority, you can not perform Easy Wireless Set Up ([S-MAP], Network No. [1] – [4]). If you must perform Easy Wireless Set Up without administrator authority, designate [USER1] - [USER3] as the network number.
- With the connection method in “When logging on without administrator authority,” when the “Wireless Networks” tab is not shown, complete the following settings.
  1. Click [Start]→[Control Panel]→[Performance and Maintenance]→[Administrative Tools]→[Services].  
The <Services> window appears.
  2. Find [Wireless Zero Configuration] in the list.
  3. If the status is blank, right-click it and select [Properties].
  4. In [Service status], click [Start].  
If you cannot click the [Start] button for [Service status] (it is grayed out), check whether [Type of startup] is set to [Manual] or [Automatic]
  5. Click [OK].  
The status is now shown as [Started].
  6. Close the window.

### <Network setting error>

Make sure that the projector's network setting is correct, if you log in as any of [USER1] through [USER3].

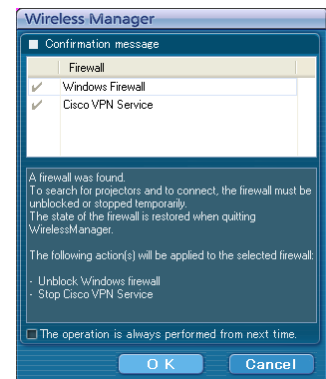
### <When network setting is done by using the connection utility>

Projector connection may be disengaged, if the wireless LAN adapter is automatically set by the connection utility. If the connection with the projector is interrupted, it is recommended to use the product with the connection utility disabled.

### <When Firewall/Connection Utility is detected>

If a Firewall is found active, the Firewall list is displayed  
To deactivate a network block, click the [OK] button to deactivate or stop it.  
The service that stopped when Wireless Manager ME 5.5 ended will return to the original state.

If the [The operation is always performed from next time.] box is checked, this message will not be displayed from the next time the application is started. You can display the message again by changing the settings in [Other2] in the options window.



screen ①

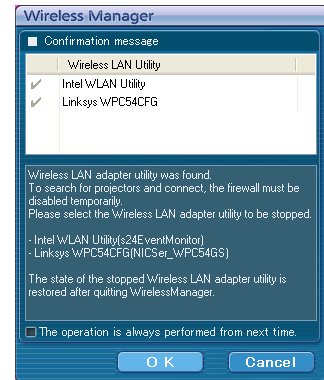
# Frequently Asked Questions (cont.)

## No wireless connection can be made between my projector and my computer. (cont.)

### <When Firewall/Connection Utility is detected (continued)>

If the connection utility is active, the connection utility list is displayed.  
 To connect to the projector, the connection utility must be stopped.  
 To stop the connection utility, click the [OK] button to stop the service.  
 The service that stopped when Wireless Manager ME 5.5 ended will return to the original state.

If the [The operation is always performed from next time.] box is checked, this message will not be displayed from the next time the application is started. You can display the message again by changing the settings in [Other2] in the options window.



screen ②

### <When the network is known to be blocked>

Before start Wireless Manager ME 5.5, deactivate the network block with a firewall.

## The projector and the computer cannot be connected through the wireless or wired LAN.

- Power off the projector, wait for the cooling fan to stop operating (after the power monitor on the projector changes from orange to red), power the projector back on, and then start the connection procedure from the launcher once again. (See pages 14 or 28)

## The connection to the wireless LAN or wired LAN is lost.

- If the live mode is canceled or the connection is lost, start the reconnection procedure from the launcher. If it is still not possible to establish a connection to the LAN, power off the projector, wait for the cooling fan to stop operating (after the power monitor on the projector changes from orange to red), power the projector back on, and then start the connection procedure from the launcher once again. (See pages 17 or 30)

## The connection has been lost in the multi live mode.

- If a computer with a certain version of the Intel Centrino mobile technology (wireless LAN) is connected to the unit, the multi live mode may be released. If this is the case, re-establish the connection from the launcher of Wireless Manager ME 5.5. (See page 32)

## The connection cannot be established with IEEE802.11 g / IEEE802.11 n.

- In environments with wireless LAN adapters that support both IEEE802.11b and IEEE802.11g, the connection may be established via IEEE802.11b.
- In some operating environments, the connection may be established via IEEE802.11b, depending on the location, radio signal conditions, distance, or other factors.
- Some wireless LAN adapters only support AD HOC connections via IEEE802.11b.
- IEEE802.11n can be used only when the wireless module (Part No.: ET-WM200) and infrastructure connection (with access point for 802.11n) are used. The wireless module can be used on only a certain models of the projectors. For details, see "Applicable projector model list" in our website (<http://panasonic.net/avc/projector/>). If there is the CD-ROM of this software in the accessory of the projector, see the "Applicable projector model list" in the application launcher in it.

## The transfer rate is slow.

- The transfer rate may be slower in some operating environments (depending on such factors as the location, radio signal conditions or distance).
- Avoid placing metal objects or other conductors near the wireless LAN antenna of a computer, otherwise the transfer rate may be slower.
- When WEP is set the image data is converted, so transfer takes time.

## Image display is slow or animation is not displayed smoothly.

- Is the computer CPU speed slow? (See page 12)  
 Live mode depends largely upon the computer CPU performance.
- Adverse effects may be exerted if there is any wireless communication in the vicinity.
- When [Resolution] is set to [High Definition] in the <Option> window (See page 49), it may take longer time to display images.
- Did you start up Microsoft PowerPoint or Windows Media Player before starting up Wireless Manager ME 5.5?  
 If so, start up the application only after you have started up Wireless Manager ME 5.5.
- The speed may drop significantly if the user does not have administrator authority.
- The speed may be slower when any other applications are running concurrently.
- Display may be slow when moving images are played in Windows Vista or Windows 7.

# Frequently Asked Questions (cont.)

## Contents of DVD, MPEG2 or Blu-ray cannot be played on computer.

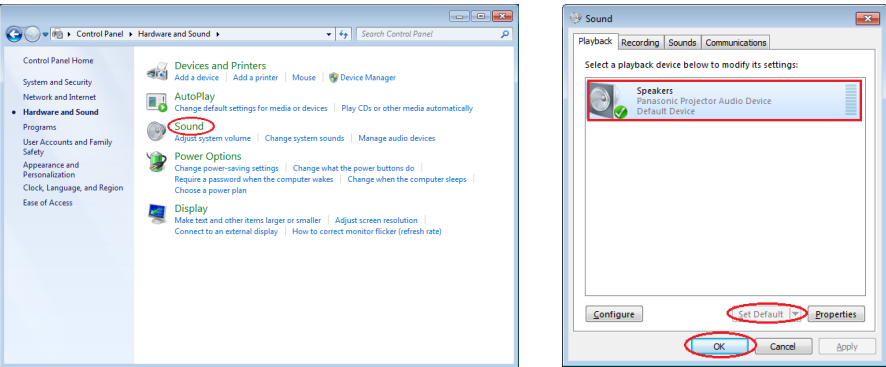
- The following limitations apply when Wireless Manager ME 5.5 is running.
  - DVD, MPEG2 and Blu-ray video playback is disabled.
  - When using 3-D software, performance may be poor. Some items may not be rendered properly, and some operations may not work correctly.
- To correct such problems, quit Wireless Manager ME 5.5 and use an RGB cable to connect the computer to the projector.
  - Some moving image application programs can not replay moving images.

## There is a time lag between operations at the computer and results in the projected image.

- Wireless Manager ME 5.5 reads the screen, compresses the data and transmits it to the projector. In the projector, the received data are extracted and then projected. Some delays occur in this system, due to the processing time and factors in the wireless environment. Different computers may also produce varying lag times.

## I can't hear the computer sound from the projector in the live mode.

- Check whether the check mark has been entered for [Produce audio along with video at live mode] from [Live Mode Settings] under the [Transmission] tab selected from Wireless Manager ME 5.5's <Option> window. (See page 49)
  - Did you start up a media player (Windows Media Player, Real Player or Quick Time, etc.) before starting live mode? If so, start the application only after starting live mode.
- **Windows 7**
- While Wireless Manager ME 5.5 is running, click [Start] → [Control Panel] → [Hardware and Sound], and then select [Sound].
  - Confirm whether “Panasonic Projector Audio Device” is set to “Default Device”.
  - If it is not set to “Default Device”, select “Panasonic Projector Audio Device” and click the [Set Default] button.
  - Click the [OK] button in the Sound window.
- ※The default device setting returns to its original state after this application ends.



## Don't know to which projector the computer is connected in multiple source live mode or multiple source multi live mode.

- Connected projectors' names, IDs and their status are displayed in the pop up window when the cursor is on [LIVE] of the launcher.

## I can't change the display style.

- Press the remote control [MULTI-LIVE] button to change the display style. (See page 35)
- ※<MULTI-LIVE> button may not be on the remote control supplied with the projector depending on the model. If you cannot operate from the remote control, it is possible to switch by selecting [MULTI-LIVE] from the “Network” menu of the projector, and then pressing the <ENTER> button.

## The Wireless Manager ME 5.5 color display is strange and characters are difficult to read.

- Click [Start] → [Control panel] → [Appearance and Themes] → [Display]. Then, open the [Settings] tab of the <Display Properties> window and set [Color quality] to [Medium (16 bit)] or higher.
- ※In Windows Vista or Windows 7, change the setting in → [Appearance and Personalization] → [Adjust screen resolution] of [Control Panel].

## Frequently Asked Questions (cont.)

### Screen saver is not displayed properly in live mode.

- Some screen savers may not be displayed properly in the live mode.  
Check the [Disable screen saver] box in [Live Mode Settings] in the <Option> window of Wireless Manager ME 5.5.  
(See page 49)

### I can't make a wireless LAN connection while using the Internet.

- If you have a wireless LAN environment which allows an internet connection, you can use both the Internet and wireless LAN connection at the same time by integrating a projector in this environment. (See page 24)
- If you have an Internet connection environment that connects via a wired LAN (Ethernet), you can use the wired LAN to connect to the Internet and use the wireless LAN to connect to the projector at the same time.

### The web control window does not appear.

- <When Easy Wireless Set Up connection is used>
- When any WebBrowser except Internet Explorer is used, the proxy settings of the WebBrowser must be manually released.
- <When [USER] connection is used>
- Manually release the proxy settings of the WebBrowser used.

### When Windows Media Player 11 is used with Windows Vista or Windows 7, there are dropouts in the audio when in the live mode.

- When using Windows Media Player 11, close as many other running programs as possible. If there still are dropouts in the audio, try using another player application.

### When using Wireless Manager ME 5.5 with Windows Vista or Windows 7, the launcher is projected.

- This limitation applies when installing and using the software in Windows Vista or Windows 7.  
The launcher can be set not to be displayed by minimizing it to the task tray.

### The "Aero" setting is cancelled.

- When Wireless Manager ME 5.5 is running, the "Aero" setting is cancelled.

# GNU LICENSES

---

## ■ GNU GENERAL PUBLIC LICENSE

Version 2, June 1991

Copyright (C) 1989, 1991 Free Software Foundation, Inc.  
51 Franklin Street, Fifth Floor, Boston, MA 02110-1301 USA

Everyone is permitted to copy and distribute verbatim copies of this license document, but changing it is not allowed.

### Preamble

The licenses for most software are designed to take away your freedom to share and change it. By contrast, the GNU General Public License is intended to guarantee your freedom to share and change free software--to make sure the software is free for all its users. This General Public License applies to most of the Free Software Foundation's software and to any other program whose authors commit to using it. (Some other Free Software Foundation software is covered by the GNU Lesser General Public License instead.) You can apply it to your programs, too.

When we speak of free software, we are referring to freedom, not price. Our General Public Licenses are designed to make sure that you have the freedom to distribute copies of free software (and charge for this service if you wish), that you receive source code or can get it if you want it, that you can change the software or use pieces of it in new free programs; and that you know you can do these things.

To protect your rights, we need to make restrictions that forbid anyone to deny you these rights or to ask you to surrender the rights. These restrictions translate to certain responsibilities for you if you distribute copies of the software, or if you modify it.

For example, if you distribute copies of such a program, whether gratis or for a fee, you must give the recipients all the rights that you have. You must make sure that they, too, receive or can get the source code. And you must show them these terms so they know their rights.

We protect your rights with two steps: (1) copyright the software, and (2) offer you this license which gives you legal permission to copy, distribute and/or modify the software.

Also, for each author's protection and ours, we want to make certain that everyone understands that there is no warranty for this free software. If the software is modified by someone else and passed on, we want its recipients to know that what they have is not the original, so that any problems introduced by others will not reflect on the original authors' reputations.

Finally, any free program is threatened constantly by software patents. We wish to avoid the danger that redistributors of a free program will individually obtain patent licenses, in effect making the program proprietary. To prevent this, we have made it clear that any patent must be licensed for everyone's free use or not licensed at all.

The precise terms and conditions for copying, distribution and modification follow.

### TERMS AND CONDITIONS FOR COPYING, DISTRIBUTION AND MODIFICATION

0. This License applies to any program or other work which contains a notice placed by the copyright holder saying it may be distributed under the terms of this General Public License. The "Program", below, refers to any such program or work, and a "work based on the Program" means either the Program or any derivative work under copyright law: that is to say, a work containing the Program or a portion of it, either verbatim or with modifications and/or translated into another language. (Hereinafter, translation is included without limitation in the term "modification".) Each licensee is addressed as "you".

Activities other than copying, distribution and modification are not covered by this License; they are outside its scope. The act of running the Program is not restricted, and the output from the Program is covered only if its contents constitute a work based on the Program (independent of having been made by running the Program). Whether that is true depends on what the Program does.

1. You may copy and distribute verbatim copies of the Program's source code as you receive it, in any medium, provided that you conspicuously and appropriately publish on each copy an appropriate copyright notice and disclaimer of warranty; keep intact all the notices that refer to this License and to the absence of any warranty; and give any other recipients of the Program a copy of this License along with the Program.  
  
You may charge a fee for the physical act of transferring a copy, and you may at your option offer warranty protection in exchange for a fee.
2. You may modify your copy or copies of the Program or any portion of it, thus forming a work based on the Program, and copy and distribute such modifications or work under the terms of Section 1 above, provided that you also meet all of these conditions:
  - a) You must cause the modified files to carry prominent notices stating that you changed the files and the date of any change.
  - b) You must cause any work that you distribute or publish, that in whole or in part contains or is derived from the Program or any part thereof, to be licensed as a whole at no charge to all third parties under the terms of this License.
  - c) If the modified program normally reads commands interactively when run, you must cause it, when started running for such interactive use in the most ordinary way, to print or display an announcement including an appropriate copyright notice and a notice that there is no warranty (or else, saying that you provide a warranty) and that users may redistribute the program under these conditions, and telling the user how to view a copy of this License. (Exception: if the Program itself is interactive but does not normally print such an announcement, your work based on the Program is not required to print an announcement.)

These requirements apply to the modified work as a whole. If identifiable sections of that work are not derived from the Program, and can be reasonably considered independent and separate works in themselves, then this License, and its terms, do not apply to those sections when you distribute them as separate works. But when you distribute the same sections as part of a whole which is a work based on the Program, the distribution of the whole must be on the terms of this License, whose permissions for other licensees extend to the entire whole, and thus to each and every part regardless of who wrote it.

Thus, it is not the intent of this section to claim rights or contest your rights to work written entirely by you; rather, the intent is to exercise the right to control the distribution of derivative or collective works based on the Program.

In addition, mere aggregation of another work not based on the Program with the Program (or with a work based on the Program) on a volume of a storage or distribution medium does not bring the other work under the scope of this License.

3. You may copy and distribute the Program (or a work based on it, under Section 2) in object code or executable form under the terms of Sections 1 and 2 above provided that you also do one of the following:
  - a) Accompany it with the complete corresponding machine-readable source code, which must be distributed under the terms of Sections 1 and 2 above on a medium customarily used for software interchange; or,
  - b) Accompany it with a written offer, valid for at least three years, to give any third party, for a charge no more than your cost of physically performing source distribution, a complete machine-readable copy of the corresponding source code, to be distributed under the terms of Sections 1 and 2 above on a medium customarily used for software interchange; or,
  - c) Accompany it with the information you received as to the offer to distribute corresponding source code. (This alternative is allowed only for noncommercial distribution and only if you received the program in object code or executable form with such an offer, in accord with Subsection b above.)

The source code for a work means the preferred form of the work for making modifications to it. For an executable work, complete source code means all the source code for all modules it contains, plus any associated interface definition files, plus the scripts used to control compilation and installation of the executable. However, as a special exception, the source code distributed need not include anything that is normally distributed (in either source or binary form) with the major components (compiler, kernel, and so on) of the operating system on which the executable runs, unless that component itself accompanies the executable.

If distribution of executable or object code is made by offering access to copy from a designated place, then offering equivalent access to copy the source code from the same place counts as distribution of the source code, even though third parties are not compelled to copy the source along with the object code.

4. You may not copy, modify, sublicense, or distribute the Program except as expressly provided under this License. Any attempt otherwise to copy, modify, sublicense or distribute the Program is void, and will automatically terminate your rights under this License. However, parties who have received copies, or rights, from you under this License will not have their licenses terminated so long as such parties remain in full compliance.
5. You are not required to accept this License, since you have

not signed it. However, nothing else grants you permission to modify or distribute the Program or its derivative works. These actions are prohibited by law if you do not accept this License. Therefore, by modifying or distributing the Program (or any work based on the Program), you indicate your acceptance of this License to do so, and all its terms and conditions for copying, distributing or modifying the Program or works based on it.

6. Each time you redistribute the Program (or any work based on the Program), the recipient automatically receives a license from the original licensor to copy, distribute or modify the Program subject to these terms and conditions. You may not impose any further restrictions on the recipients' exercise of the rights granted herein. You are not responsible for enforcing compliance by third parties to this License.
7. If, as a consequence of a court judgment or allegation of patent infringement or for any other reason (not limited to patent issues), conditions are imposed on you (whether by court order, agreement or otherwise) that contradict the conditions of this License, they do not excuse you from the conditions of this License. If you cannot distribute so as to satisfy simultaneously your obligations under this License and any other pertinent obligations, then as a consequence you may not distribute the Program at all. For example, if a patent license would not permit royalty-free redistribution of the Program by all those who receive copies directly or indirectly through you, then the only way you could satisfy both it and this License would be to refrain entirely from distribution of the Program.

If any portion of this section is held invalid or unenforceable under any particular circumstance, the balance of the section is intended to apply and the section as a whole is intended to apply in other circumstances.

It is not the purpose of this section to induce you to infringe any patents or other property right claims or to contest validity of any such claims; this section has the sole purpose of protecting the integrity of the free software distribution system, which is implemented by public license practices. Many people have made generous contributions to the wide range of software distributed through that system in reliance on consistent application of that system; it is up to the author/donor to decide if he or she is willing to distribute software through any other system and a licensee cannot impose that choice.

This section is intended to make thoroughly clear what is believed to be a consequence of the rest of this License.

8. If the distribution and/or use of the Program is restricted in certain countries either by patents or by copyrighted interfaces, the original copyright holder who places the Program under this License may add an explicit geographical distribution limitation excluding those countries, so that distribution is permitted only in or among countries not thus excluded. In such case, this License incorporates the limitation as if written in the body of this License.
9. The Free Software Foundation may publish revised and/or new versions of the General Public License from time to time. Such new versions will be similar in spirit to the present version, but may differ in detail to address new problems or concerns.

Each version is given a distinguishing version number. If the Program specifies a version number of this License which applies to it and "any later version", you have the option of following the terms and conditions either of that version or of any later version published by the Free Software Foundation. If the Program does not specify a version number of this License, you may choose any version ever published by the Free Software Foundation.

10. If you wish to incorporate parts of the Program into other free programs whose distribution conditions are different, write to the author to ask for permission. For software which is copyrighted by the Free Software Foundation, write to the Free Software Foundation; we sometimes make exceptions for this. Our decision will be guided by the two goals of preserving the free status of all derivatives of our free software and of promoting the sharing and reuse of software generally.

## NO WARRANTY

11. BECAUSE THE PROGRAM IS LICENSED FREE OF CHARGE, THERE IS NO WARRANTY FOR THE PROGRAM, TO THE EXTENT PERMITTED BY APPLICABLE LAW. EXCEPT WHEN OTHERWISE STATED IN WRITING THE COPYRIGHT HOLDERS AND/OR OTHER PARTIES PROVIDE THE PROGRAM "AS IS" WITHOUT WARRANTY OF ANY KIND, EITHER EXPRESSED OR IMPLIED, INCLUDING, BUT NOT LIMITED TO, THE IMPLIED WARRANTIES OF MERCHANTABILITY AND FITNESS FOR A PARTICULAR PURPOSE. THE ENTIRE RISK AS TO THE QUALITY AND PERFORMANCE OF THE PROGRAM IS WITH YOU. SHOULD THE PROGRAM PROVE DEFECTIVE, YOU ASSUME THE COST OF ALL NECESSARY SERVICING, REPAIR OR CORRECTION.
12. IN NO EVENT UNLESS REQUIRED BY APPLICABLE LAW OR AGREED TO IN WRITING WILL ANY COPYRIGHT HOLDER, OR ANY OTHER PARTY WHO MAY MODIFY AND/OR REDISTRIBUTE THE PROGRAM AS PERMITTED ABOVE, BE LIABLE TO YOU FOR DAMAGES, INCLUDING ANY GENERAL, SPECIAL, INCIDENTAL OR CONSEQUENTIAL DAMAGES ARISING OUT OF THE USE OR INABILITY TO USE THE PROGRAM (INCLUDING BUT NOT LIMITED TO LOSS OF DATA OR DATA BEING RENDERED INACCURATE OR LOSSES SUSTAINED BY YOU OR THIRD PARTIES OR A FAILURE OF THE PROGRAM TO OPERATE WITH ANY OTHER PROGRAMS), EVEN IF SUCH HOLDER OR OTHER PARTY HAS BEEN ADVISED OF THE POSSIBILITY OF SUCH DAMAGES.

### END OF TERMS AND CONDITIONS

#### How to Apply These Terms to Your New Programs

If you develop a new program, and you want it to be of the greatest possible use to the public, the best way to achieve this is to make it free software which everyone can redistribute and change under these terms.

To do so, attach the following notices to the program. It is safest to attach them to the start of each source file to most effectively convey the exclusion of warranty; and each file should have at least the "copyright" line and a pointer to where the full notice is found.

<one line to give the program's name and an idea of what it does.>

Copyright (C) <yyyy> <name of author>

This program is free software; you can redistribute it and/or modify it under the terms of the GNU General Public License as published by the Free Software Foundation; either version 2 of the License, or (at your option) any later version.

This program is distributed in the hope that it will be useful, but WITHOUT ANY WARRANTY; without even the implied warranty of MERCHANTABILITY or FITNESS FOR A PARTICULAR PURPOSE. See the GNU General Public License for more details.

You should have received a copy of the GNU General Public License along with this program; if not, write to the Free Software Foundation, Inc., 51 Franklin Street, Fifth Floor, Boston, MA 02110-1301 USA

Also add information on how to contact you by electronic and paper mail.

If the program is interactive, make it output a short notice like this when it starts in an interactive mode:

Gnomovision version 69, Copyright (C) <year> <name of author>

Gnomovision comes with ABSOLUTELY NO WARRANTY; for details type `show w'.

This is free software, and you are welcome to redistribute it under certain conditions; type `show c' for details.

The hypothetical commands `show w' and `show c' should show the appropriate parts of the General Public License. Of course, the commands you use may be called something other than `show w' and `show c'; they could even be mouse-clicks or menu items--whatever suits your program.

You should also get your employer (if you work as a programmer) or your school, if any, to sign a "copyright disclaimer" for the program, if necessary. Here is a sample; alter the names:

Yoyodyne, Inc., hereby disclaims all copyright interest in the program `Gnomovision' (which makes passes at compilers) written by James Hacker.

<signature of Ty Coon>, 1 April 1989  
Ty Coon, President of Vice

This General Public License does not permit incorporating your program into proprietary programs. If your program is a subroutine library, you may consider it more useful to permit linking proprietary applications with the library. If this is what you want to do, use the GNU Lesser General Public License instead of this License.

# GNU LESSER GENERAL PUBLIC LICENSE

Version 2.1, February 1999

Copyright (C) 1991, 1999 Free Software Foundation, Inc.

51 Franklin Street, Fifth Floor, Boston, MA 02110-1301 USA

Everyone is permitted to copy and distribute verbatim copies of this license document, but changing it is not allowed.

[This is the first released version of the Lesser GPL. It also counts as the successor of the GNU Library Public License, version 2, hence the version number 2.1.]

## Preamble

The licenses for most software are designed to take away your freedom to share and change it. By contrast, the GNU General Public Licenses are intended to guarantee your freedom to share and change free software--to make sure the software is free for all its users.

This license, the Lesser General Public License, applies to some specially designated software packages--typically libraries--of the Free Software Foundation and other authors who decide to use it. You can use it too, but we suggest you first think carefully about whether this license or the ordinary General Public License is the better strategy to use in any particular case, based on the explanations below.

When we speak of free software, we are referring to freedom of use, not price. Our General Public Licenses are designed to make sure that you have the freedom to distribute copies of free software (and charge for this service if you wish); that you receive source code or can get it if you want it; that you can change the software and use pieces of it in new free programs; and that you are informed that you can do these things.

To protect your rights, we need to make restrictions that forbid distributors to deny you these rights or to ask you to surrender these rights. These restrictions translate to certain responsibilities for you if you distribute copies of the library or if you modify it.

For example, if you distribute copies of the library, whether gratis or for a fee, you must give the recipients all the rights that we gave you. You must make sure that they, too, receive or can get the source code. If you link other code with the library, you must provide complete object files to the recipients, so that they can relink them with the library after making changes to the library and recompiling it. And you must show them these terms so they know their rights.

We protect your rights with a two-step method: (1) we copyright the library, and (2) we offer you this license, which gives you legal permission to copy, distribute and/or modify the library.

To protect each distributor, we want to make it very clear that there is no warranty for the free library. Also, if the library is modified by someone else and passed on, the recipients should know that what they have is not the original version, so that the original author's reputation will not be affected by problems that might be introduced by others.

Finally, software patents pose a constant threat to the existence of any free program. We wish to make sure that a company cannot effectively restrict the users of a free program by obtaining a restrictive license from a patent holder. Therefore, we insist that

any patent license obtained for a version of the library must be consistent with the full freedom of use specified in this license.

Most GNU software, including some libraries, is covered by the ordinary GNU General Public License. This license, the GNU Lesser General Public License, applies to certain designated libraries, and is quite different from the ordinary General Public License. We use this license for certain libraries in order to permit linking those libraries into non-free programs.

When a program is linked with a library, whether statically or using a shared library, the combination of the two is legally speaking a combined work, a derivative of the original library. The ordinary General Public License therefore permits such linking only if the entire combination fits its criteria of freedom. The Lesser General Public License permits more lax criteria for linking other code with the library.

We call this license the "Lesser" General Public License because it does Less to protect the user's freedom than the ordinary General Public License. It also provides other free software developers Less of an advantage over competing non-free programs. These disadvantages are the reason we use the ordinary General Public License for many libraries. However, the Lesser license provides advantages in certain special circumstances.

For example, on rare occasions, there may be a special need to encourage the widest possible use of a certain library, so that it becomes a de-facto standard. To achieve this, non-free programs must be allowed to use the library. A more frequent case is that a free library does the same job as widely used non-free libraries. In this case, there is little to gain by limiting the free library to free software only, so we use the Lesser General Public License.

In other cases, permission to use a particular library in non-free programs enables a greater number of people to use a large body of free software. For example, permission to use the GNU C Library in non-free programs enables many more people to use the whole GNU operating system, as well as its variant, the GNU/Linux operating system.

Although the Lesser General Public License is Less protective of the users' freedom, it does ensure that the user of a program that is linked with the Library has the freedom and the wherewithal to run that program using a modified version of the Library.

The precise terms and conditions for copying, distribution and modification follow. Pay close attention to the difference between a "work based on the library" and a "work that uses the library". The former contains code derived from the library, whereas the latter must be combined with the library in order to run.



## TERMS AND CONDITIONS FOR COPYING, DISTRIBUTION AND MODIFICATION

0. This License Agreement applies to any software library or other program which contains a notice placed by the copyright holder or other authorized party saying it may be distributed under the terms of this Lesser General Public License (also called "this License"). Each licensee is addressed as "you".

A "library" means a collection of software functions and/or data prepared so as to be conveniently linked with application programs (which use some of those functions and data) to form executables.

The "Library", below, refers to any such software library or work which has been distributed under these terms. A "work based on the Library" means either the Library or any derivative work under copyright law: that is to say, a work containing the Library or a portion of it, either verbatim or with modifications and/or translated straightforwardly into another language. (Hereinafter, translation is included without limitation in the term "modification".)

"Source code" for a work means the preferred form of the work for making modifications to it. For a library, complete source code means all the source code for all modules it contains, plus any associated interface definition files, plus the scripts used to control compilation and installation of the library.

Activities other than copying, distribution and modification are not covered by this License; they are outside its scope. The act of running a program using the Library is not restricted, and output from such a program is covered only if its contents constitute a work based on the Library (independent of the use of the Library in a tool for writing it). Whether that is true depends on what the Library does and what the program that uses the Library does.

1. You may copy and distribute verbatim copies of the Library's complete source code as you receive it, in any medium, provided that you conspicuously and appropriately publish on each copy an appropriate copyright notice and disclaimer of warranty; keep intact all the notices that refer to this License and to the absence of any warranty; and distribute a copy of this License along with the Library.

You may charge a fee for the physical act of transferring a copy, and you may at your option offer warranty protection in exchange for a fee.

2. You may modify your copy or copies of the Library or any portion of it, thus forming a work based on the Library, and copy and distribute such modifications or work under the terms of Section 1 above, provided that you also meet all of these conditions:

- The modified work must itself be a software library.
- You must cause the files modified to carry prominent notices stating that you changed the files and the date of any change.
- You must cause the whole of the work to be licensed at no charge to all third parties under the terms of this License.
- If a facility in the modified Library refers to a function or a table of data to be supplied by an application program that uses the facility, other than as an argument passed when the facility is invoked, then you must make a good faith effort to ensure that, in the event an application does not supply such function or table, the facility still operates, and performs whatever part of its purpose remains meaningful.

(For example, a function in a library to compute square roots has a purpose that is entirely well-defined

independent of the application. Therefore, Subsection 2d requires that any application-supplied function or table used by this function must be optional: if the application does not supply it, the square root function must still compute square roots.)

These requirements apply to the modified work as a whole. If identifiable sections of that work are not derived from the Library, and can be reasonably considered independent and separate works in themselves, then this License, and its terms, do not apply to those sections when you distribute them as separate works. But when you distribute the same sections as part of a whole which is a work based on the Library, the distribution of the whole must be on the terms of this License, whose permissions for other licensees extend to the entire whole, and thus to each and every part regardless of who wrote it.

Thus, it is not the intent of this section to claim rights or contest your rights to work written entirely by you; rather, the intent is to exercise the right to control the distribution of derivative or collective works based on the Library.

In addition, mere aggregation of another work not based on the Library with the Library (or with a work based on the Library) on a volume of a storage or distribution medium does not bring the other work under the scope of this License.

3. You may opt to apply the terms of the ordinary GNU General Public License instead of this License to a given copy of the Library. To do this, you must alter all the notices that refer to this License, so that they refer to the ordinary GNU General Public License, version 2, instead of to this License. (If a newer version than version 2 of the ordinary GNU General Public License has appeared, then you can specify that version instead if you wish.) Do not make any other change in these notices.

Once this change is made in a given copy, it is irreversible for that copy, so the ordinary GNU General Public License applies to all subsequent copies and derivative works made from that copy.

This option is useful when you wish to copy part of the code of the Library into a program that is not a library.

4. You may copy and distribute the Library (or a portion or derivative of it, under Section 2) in object code or executable form under the terms of Sections 1 and 2 above provided that you accompany it with the complete corresponding machine-readable source code, which must be distributed under the terms of Sections 1 and 2 above on a medium customarily used for software interchange.

If distribution of object code is made by offering access to copy from a designated place, then offering equivalent access to copy the source code from the same place satisfies the requirement to distribute the source code, even though third parties are not compelled to copy the source along with the object code.

5. A program that contains no derivative of any portion of the Library, but is designed to work with the Library by being compiled or linked with it, is called a "work that uses the Library". Such a work, in isolation, is not a derivative work of the Library, and therefore falls outside the scope of this License.

However, linking a "work that uses the Library" with the Library creates an executable that is a derivative of the Library (because it contains portions of the Library), rather than a "work that uses the library". The executable is therefore covered by this License. Section 6 states terms for distribution of such executables.

When a "work that uses the Library" uses material from a

header file that is part of the Library, the object code for the work may be a derivative work of the Library even though the source code is not. Whether this is true is especially significant if the work can be linked without the Library, or if the work is itself a library. The threshold for this to be true is not precisely defined by law.

If such an object file uses only numerical parameters, data structure layouts and accessors, and small macros and small inline functions (ten lines or less in length), then the use of the object file is unrestricted, regardless of whether it is legally a derivative work. (Executables containing this object code plus portions of the Library will still fall under Section 6.)

Otherwise, if the work is a derivative of the Library, you may distribute the object code for the work under the terms of Section 6. Any executables containing that work also fall under Section 6, whether or not they are linked directly with the Library itself.

6. As an exception to the Sections above, you may also combine or link a "work that uses the Library" with the Library to produce a work containing portions of the Library, and distribute that work under terms of your choice, provided that the terms permit modification of the work for the customer's own use and reverse engineering for debugging such modifications.

You must give prominent notice with each copy of the work that the Library is used in it and that the Library and its use are covered by this License. You must supply a copy of this License. If the work during execution displays copyright notices, you must include the copyright notice for the Library among them, as well as a reference directing the user to the copy of this License. Also, you must do one of these things:

- a) Accompany the work with the complete corresponding machine-readable source code for the Library including whatever changes were used in the work (which must be distributed under Sections 1 and 2 above); and, if the work is an executable linked with the Library, with the complete machine-readable "work that uses the Library", as object code and/or source code, so that the user can modify the Library and then relink to produce a modified executable containing the modified Library. (It is understood that the user who changes the contents of definitions files in the Library will not necessarily be able to recompile the application to use the modified definitions.)
- b) Use a suitable shared library mechanism for linking with the Library. A suitable mechanism is one that (1) uses at run time a copy of the library already present on the user's computer system, rather than copying library functions into the executable, and (2) will operate properly with a modified version of the library, if the user installs one, as long as the modified version is interface-compatible with the version that the work was made with.
- c) Accompany the work with a written offer, valid for at least three years, to give the same user the materials specified in Subsection 6a, above, for a charge no more than the cost of performing this distribution.
- d) If distribution of the work is made by offering access to copy from a designated place, offer equivalent access to copy the above specified materials from the same place.
- e) Verify that the user has already received a copy of these materials or that you have already sent this user a copy.

For an executable, the required form of the "work that uses the Library" must include any data and utility

programs needed for reproducing the executable from it. However, as a special exception, the materials to be distributed need not include anything that is normally distributed (in either source or binary form) with the major components (compiler, kernel, and so on) of the operating system on which the executable runs, unless that component itself accompanies the executable.

It may happen that this requirement contradicts the license restrictions of other proprietary libraries that do not normally accompany the operating system. Such a contradiction means you cannot use both them and the Library together in an executable that you distribute.

7. You may place library facilities that are a work based on the Library side-by-side in a single library together with other library facilities not covered by this License, and distribute such a combined library, provided that the separate distribution of the work based on the Library and of the other library facilities is otherwise permitted, and provided that you do these two things:
  - a) Accompany the combined library with a copy of the same work based on the Library, uncombined with any other library facilities. This must be distributed under the terms of the Sections above.
  - b) Give prominent notice with the combined library of the fact that part of it is a work based on the Library, and explaining where to find the accompanying uncombined form of the same work.
8. You may not copy, modify, sublicense, link with, or distribute the Library except as expressly provided under this License. Any attempt otherwise to copy, modify, sublicense, link with, or distribute the Library is void, and will automatically terminate your rights under this License. However, parties who have received copies, or rights, from you under this License will not have their licenses terminated so long as such parties remain in full compliance.
9. You are not required to accept this License, since you have not signed it. However, nothing else grants you permission to modify or distribute the Library or its derivative works. These actions are prohibited by law if you do not accept this License. Therefore, by modifying or distributing the Library (or any work based on the Library), you indicate your acceptance of this License to do so, and all its terms and conditions for copying, distributing or modifying the Library or works based on it.
10. Each time you redistribute the Library (or any work based on the Library), the recipient automatically receives a license from the original licensor to copy, distribute, link with or modify the Library subject to these terms and conditions. You may not impose any further restrictions on the recipients' exercise of the rights granted herein. You are not responsible for enforcing compliance by third parties with this License.
11. If, as a consequence of a court judgment or allegation of patent infringement or for any other reason (not limited to patent issues), conditions are imposed on you (whether by court order, agreement or otherwise) that contradict the conditions of this License, they do not excuse you from the conditions of this License. If you cannot distribute so as to satisfy simultaneously your obligations under this License and any other pertinent obligations, then as a consequence you may not distribute the Library at all. For example, if a patent license would not permit royalty-free redistribution of the Library by all those who receive copies directly or indirectly through you, then the only way you could satisfy both it and this License would be to refrain entirely from distribution of the Library.

If any portion of this section is held invalid or unenforceable

under any particular circumstance, the balance of the section is intended to apply, and the section as a whole is intended to apply in other circumstances.

It is not the purpose of this section to induce you to infringe any patents or other property right claims or to contest validity of any such claims; this section has the sole purpose of protecting the integrity of the free software distribution system which is implemented by public license practices. Many people have made generous contributions to the wide range of software distributed through that system in reliance on consistent application of that system; it is up to the author/donor to decide if he or she is willing to distribute software through any other system and a licensee cannot impose that choice.

This section is intended to make thoroughly clear what is believed to be a consequence of the rest of this License.

12. If the distribution and/or use of the Library is restricted in certain countries either by patents or by copyrighted interfaces, the original copyright holder who places the Library under this License may add an explicit geographical distribution limitation excluding those countries, so that distribution is permitted only in or among countries not thus excluded. In such case, this License incorporates the limitation as if written in the body of this License.

13. The Free Software Foundation may publish revised and/or new versions of the Lesser General Public License from time to time. Such new versions will be similar in spirit to the present version, but may differ in detail to address new problems or concerns.

Each version is given a distinguishing version number. If the Library specifies a version number of this License which applies to it and "any later version", you have the option of following the terms and conditions either of that version or of any later version published by the Free Software Foundation. If the Library does not specify a license version number, you may choose any version ever published by the Free Software Foundation.

14. If you wish to incorporate parts of the Library into other free programs whose distribution conditions are incompatible with these, write to the author to ask for permission. For software which is copyrighted by the Free Software Foundation, write to the Free Software Foundation; we sometimes make exceptions for this. Our decision will be guided by the two goals of preserving the free status of all derivatives of our free software and of promoting the sharing and reuse of software generally.

## NO WARRANTY

15. BECAUSE THE LIBRARY IS LICENSED FREE OF CHARGE, THERE IS NO WARRANTY FOR THE LIBRARY, TO THE EXTENT PERMITTED BY APPLICABLE LAW. EXCEPT WHEN OTHERWISE STATED IN WRITING THE COPYRIGHT HOLDERS AND/OR OTHER PARTIES PROVIDE THE LIBRARY "AS IS" WITHOUT WARRANTY OF ANY KIND, EITHER EXPRESSED OR IMPLIED, INCLUDING, BUT NOT LIMITED TO, THE IMPLIED WARRANTIES OF MERCHANTABILITY AND FITNESS FOR A PARTICULAR PURPOSE. THE ENTIRE RISK AS TO THE QUALITY AND PERFORMANCE OF THE LIBRARY IS WITH YOU. SHOULD THE LIBRARY PROVE DEFECTIVE, YOU ASSUME THE COST OF ALL NECESSARY SERVICING, REPAIR OR CORRECTION.

16. IN NO EVENT UNLESS REQUIRED BY APPLICABLE LAW OR AGREED TO IN WRITING WILL ANY COPYRIGHT HOLDER, OR ANY OTHER PARTY WHO MAY MODIFY AND/OR REDISTRIBUTE THE LIBRARY AS PERMITTED ABOVE, BE LIABLE TO YOU FOR

DAMAGES, INCLUDING ANY GENERAL, SPECIAL, INCIDENTAL OR CONSEQUENTIAL DAMAGES ARISING OUT OF THE USE OR INABILITY TO USE THE LIBRARY (INCLUDING BUT NOT LIMITED TO LOSS OF DATA OR DATA BEING RENDERED INACCURATE OR LOSSES SUSTAINED BY YOU OR THIRD PARTIES OR A FAILURE OF THE LIBRARY TO OPERATE WITH ANY OTHER SOFTWARE), EVEN IF SUCH HOLDER OR OTHER PARTY HAS BEEN ADVISED OF THE POSSIBILITY OF SUCH DAMAGES.

## END OF TERMS AND CONDITIONS

### How to Apply These Terms to Your New Libraries

If you develop a new library, and you want it to be of the greatest possible use to the public, we recommend making it free software that everyone can redistribute and change. You can do so by permitting redistribution under these terms (or, alternatively, under the terms of the ordinary General Public License).

To apply these terms, attach the following notices to the library. It is safest to attach them to the start of each source file to most effectively convey the exclusion of warranty; and each file should have at least the "copyright" line and a pointer to where the full notice is found.

<one line to give the library's name and an idea of what it does.>

Copyright (C) <year> <name of author>

This library is free software; you can redistribute it and/or modify it under the terms of the GNU Lesser General Public License as published by the Free Software Foundation; either version 2.1 of the License, or (at your option) any later version.

This library is distributed in the hope that it will be useful, but WITHOUT ANY WARRANTY; without even the implied warranty of MERCHANTABILITY or FITNESS FOR A PARTICULAR PURPOSE. See the GNU Lesser General Public License for more details.

You should have received a copy of the GNU Lesser General Public License along with this library; if not, write to the Free Software Foundation, Inc., 51 Franklin Street, Fifth Floor, Boston, MA 02110-1301 USA

Also add information on how to contact you by electronic and paper mail.

You should also get your employer (if you work as a programmer) or your school, if any, to sign a "copyright disclaimer" for the library, if necessary. Here is a sample; alter the names:

Yoyodyne, Inc., hereby disclaims all copyright interest in the library 'Frob' (a library for tweaking knobs) written by James Random Hacker.

<signature of Ty Coon>, 1 April 1990  
Ty Coon, President of Vice

That's all there is to it!

# Trademarks

---

- Microsoft and its logo as well as Windows®, Windows® XP, Windows Vista®, Windows® 7, Windows Media and Microsoft Office are either registered trademarks or trademarks of Microsoft Corporation in the United States and/or other countries.
- Intel, Pentium and Centrino are registered trademarks or trademarks of Intel Corporation or its affiliates in the United States and other countries.
- Other company names, product names or other names noted in this manual are trademarks or registered trademarks of the respective companies. Note that ® and TM marks are not indicated in the text of this manual.

**Notes:**

- Unauthorized use or reproduction of part or all of this product software and manuals is strictly prohibited.
- Panasonic cannot be held liable for any effects resulting from the use of this product software and manuals.
- Panasonic reserves the right to revise this product software specifications and manual contents without notice.

---

# Panasonic Corporation

Web Site : <http://panasonic.net/avc/projector/>

© Panasonic Corporation 2011