



EAH-DJ1200

Stereo Headphones

Owner's manual

스테레오 헤드폰

사용 설명서

Specifications

■ General

Operating temperature range	0 °C to 40 °C (32 °F to 104 °F)
Operating humidity range	35 %RH to 80 %RH (no condensation)
Mass (Weight)	Approx. 233 g (8.2 oz) (without cord)

■ Headphone section

Impedance (with Detachable Coiled Cord)	45 Ω
Frequency response	8 Hz - 30000 Hz
Sensitivity	106 dB/mW
Power handling capacity	2500 mW (IEC)

■ Speaker section

Driver units	40 mm (1 9/16 in)
--------------	-------------------

■ Accessory section

Detachable Straight Cord	Approx. 1.2 m (3.9 ft)
Detachable Coiled Cord (Extended length)	Approx. 1.5 m (4.9 ft) (Approx. 2.2 m (7.2 ft))
Carrying Pouch	
Plug Adaptor [6.3 mm (1/4 in)]	

* Specifications are subject to change without notice.

For U.S.A.

To dispose of your product, please recycle in accordance with local environmental regulations. For further recycling information please visit <https://shop.panasonic.com/recycle>.

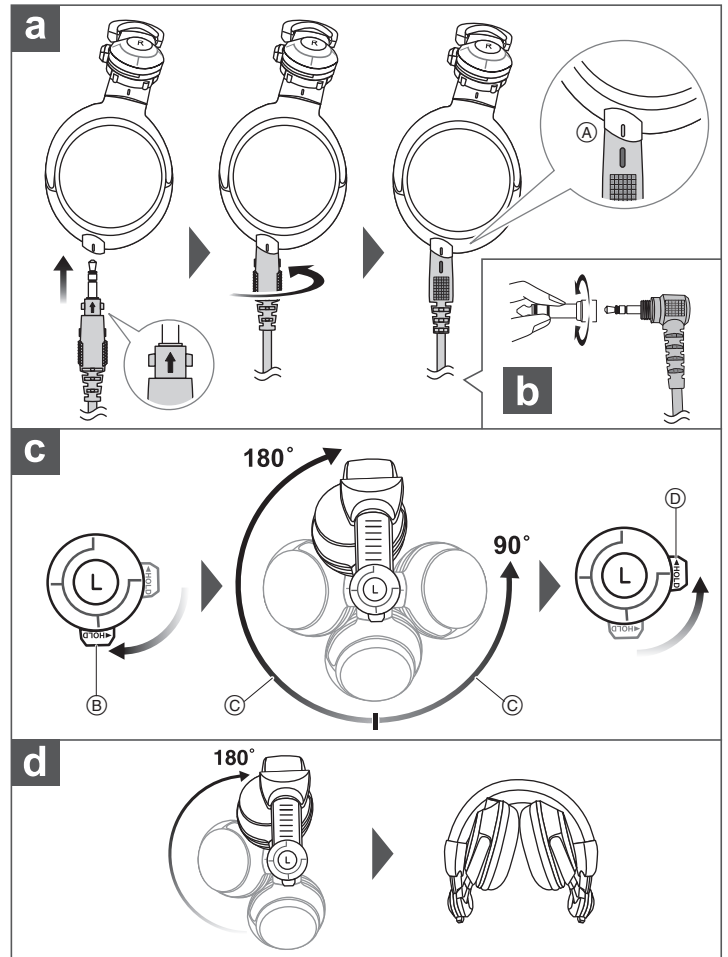
Register online at <http://shop.panasonic.com/support> (U.S. customers only)

If you have any questions, visit:

In the U.S.A.: <http://shop.panasonic.com/support>

Panasonic Corporation of North America
Two Riverfront Plaza, Newark, NJ 07102-5490
<http://shop.panasonic.com>

Panasonic Entertainment & Communication Co., Ltd.
<http://www.panasonic.com>



English

Thank you for purchasing this product.

Please read these instructions carefully before using this product, and save this manual for future use.

a Locking Detachable Cord

Ⓐ Lock

b 6.3 mm Plug Adaptor

(For coiled cord, pre-attached)

c Lockable Swing Arm for Single-side Monitoring

Ⓑ HOLD release

Ⓒ Rotatable range

Ⓓ HOLD

d Foldable Design for Easy Portability

Warning

- Avoid wearing your headphones when driving, cycling or in other situations where quick reactions are required or hearing must not be impaired.
- Do not wear your headphones for extended periods of time at high volume.
- Keep the plug adaptor out of reach of children to prevent swallowing.

한국어

제품을 구매해 주셔서 감사합니다.

이 제품을 사용하기 전에 이 지침을 주의 깊게 읽어보시고 이 설명서를 나중에 사용할 수 있도록 잘 보관하십시오.

a 탈착식 잠금 코드

Ⓐ 잠금

b 6.3 mm 플러그 어댑터

(코일 코드용, 사전 부착됨)

c 편측 모니터링을 위한 잠금 가능한 스윙 암

Ⓑ HOLD 해제

Ⓒ 회전 가능 범위

Ⓓ HOLD

d 간편한 휴대성을 위한 접이식 디자인

경고

- 운전 중이거나 자전거를 탈 때, 또는 기타 빠른 반응이 필요하거나, 청력을 유지해야 하는 상황에서 헤드폰을 착용하지 마십시오.
- 헤드폰을 높은 볼륨으로 장시간 착용하지 마십시오.
- 플러그 어댑터를 어린이의 손이 닿지 않는 곳에 보관하여 어린이가 삼키는 일이 없도록 주의하십시오.

제조년월 읽는 방법

우측 이어패드 안쪽면에 표기

예) 4BXX (X- 임의의 숫자 또는 문자) -- 2024 년 2 월

월 (A-1 월, B-2 월, ... , L-12 월)

년 (4-2024, 5-2025, ... , 0-2030, ... , 3-2033)

Limited Warranty (ONLY FOR U.S.A.)

Technics Products Limited Warranty

Limited Warranty Coverage

If your product does not work properly because of a defect in materials or workmanship, Panasonic Corporation of North America (referred to as "the warrantor") will, for the length of the period indicated on the chart below, which starts with the date of original purchase ("warranty period"), at its option either (a) repair your product with new or refurbished parts, (b) replace it with a new or a refurbished equivalent value product, or (c) refund your purchase price. The decision to repair, replace or refund will be made by the warrantor.

Product or Part Name	Parts	Labor
Headphones/Earphones/Headset	1 year	Not Applicable
All included Accessories	90 days	Not Applicable

During the "Labor" warranty period there will be no charge for labor. During the "Parts" warranty period, there will be no charge for parts. This Limited Warranty excludes both parts and labor for non-rechargeable batteries, antennas, and cosmetic parts (cabinet). This warranty only applies to products purchased and serviced in the United States. This warranty is extended only to the original purchaser of a new product which was not sold "as is".

Mail-In Service--Online Repair Request

Online Repair Request

To submit a new repair request and for quick repair status visit our Web Site at <http://shop.panasonic.com/support>

When shipping the unit, carefully pack, include all supplied accessories listed in the Owner's Manual, and send it prepaid, adequately insured and packed well in a carton box. When shipping Lithium Ion batteries please visit our Web Site at <http://shop.panasonic.com/support> as Panasonic is committed to providing the most up to date information. Include a letter detailing the complaint, a return address and provide a daytime phone number where you can be reached. A valid registered receipt is required under the Limited Warranty.

IF REPAIR IS NEEDED DURING THE WARRANTY PERIOD, THE PURCHASER WILL BE REQUIRED TO FURNISH A SALES RECEIPT/PROOF OF PURCHASE INDICATING DATE OF PURCHASE, AMOUNT PAID AND PLACE OF PURCHASE. CUSTOMER WILL BE CHARGED FOR THE REPAIR OF ANY UNIT RECEIVED WITHOUT SUCH PROOF OF PURCHASE.

Limited Warranty Limits and Exclusions

This warranty ONLY COVERS failures due to defects in materials or workmanship, and DOES NOT COVER normal wear and tear or cosmetic damage. The warranty ALSO DOES NOT COVER damages which occurred in shipment, or failures which are caused by products not supplied by the warrantor, or failures which result from accidents, misuse, abuse, neglect, mishandling, misapplication, alteration, faulty installation, set-up adjustments, misadjustment of consumer controls, improper maintenance, power line surge, lightning damage, modification, introduction of sand, humidity or liquids, commercial use such as hotel, office, restaurant, or other business or rental use of the product, or service by anyone other than a Factory Service Center or other Authorized Servicer, or damage that is attributable to acts of God.

**THERE ARE NO EXPRESS WARRANTIES EXCEPT AS LISTED UNDER "LIMITED WARRANTY COVERAGE".
THE WARRANTOR IS NOT LIABLE FOR INCIDENTAL OR CONSEQUENTIAL DAMAGES RESULTING FROM THE USE OF THIS PRODUCT, OR ARISING OUT OF ANY BREACH OF THIS WARRANTY.**

(As examples, this excludes damages for lost time, travel to and from the servicer, loss of or damage to media or images, data or other memory or recorded content. The items listed are not exclusive, but for illustration only.)

ALL EXPRESS AND IMPLIED WARRANTIES, INCLUDING THE WARRANTY OF MERCHANTABILITY, ARE LIMITED TO THE PERIOD OF THE LIMITED WARRANTY.

Some states do not allow the exclusion or limitation of incidental or consequential damages, or limitations on how long an implied warranty lasts, so the exclusions may not apply to you.

This warranty gives you specific legal rights and you may also have other rights which vary from state to state. If a problem with this product develops during or after the warranty period, you may contact your dealer or Service Center. If the problem is not handled to your satisfaction, then write to:

Panasonic Corporation of North America
Consumer Affairs Department
Two Riverfront Plaza
Newark NJ 07102-5490

PARTS AND SERVICE, WHICH ARE NOT COVERED BY THIS LIMITED WARRANTY, ARE YOUR RESPONSIBILITY.

Product registration is not mandatory. Failure to complete the form does not affect the consumer's warranty rights.

Shop Accessories!

for all your Technics gear

Go to

<http://shop.panasonic.com/support>

Get everything you need to get the most out of your Technics products
Accessories & Parts for your Camera, Phone, A/V products, TV, Computers & Networking, Personal Care, Home Appliances, Headphones, Batteries, Backup Chargers & more...

Customer Services Directory

For Product Information, Operating Assistance, Parts, Owner's Manuals, Dealer and Service info
go to <http://shop.panasonic.com/support>

For the hearing or speech impaired TTY: 1- 877-833-8855

As of August 2023